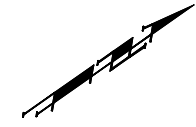
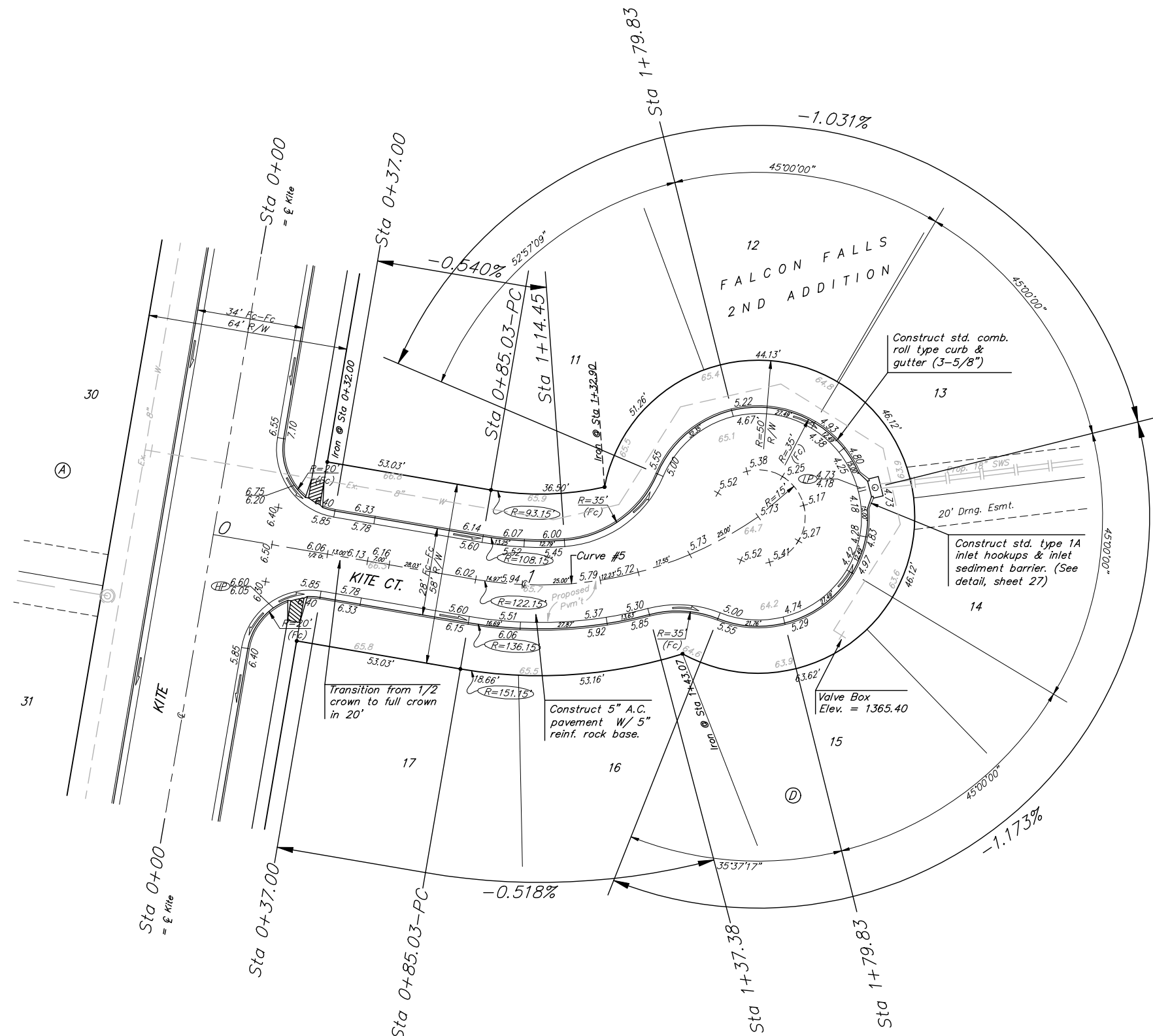


BENCHMARKS:
 BM #1: "□" CL face of catch basin, west side of Lot 4, Block 5, Falcon Falls Addition. Elev. = 1352.47 MSL

BM #2: "□" south end of the south curb return at Kite and Peregrine, Falcon Falls Addition. Elev. = 1359.85 MSL



Scale: 1" = 20'
 • = Iron



Curve #5
 Curve Data Based on Centerline

Rad. = 122.15' Delta = 44° 27' 52" Tangent = 49.93'
 Arc = 94.8' L.C. = 92.43' Def/Ft. = 14.07103 Min.

| Station | Arc | FACE CHORD LENGTHS | | Defl. | T. Defl. |
|---------|--------|--------------------|--------|----------|-----------|
| | | 8' Lt. | 8' Rt. | | |
| 0+85.03 | - | - | - | 0'00"00" | 0'00"00" |
| 1+00.00 | 14.97' | 12.27' | 17.65' | 3'30'38" | 3'30'38" |
| 1+14.45 | 14.45' | 11.84' | 17.04' | 3'23'19" | 6'53'58" |
| 1+25.00 | 10.55' | 8.65' | 12.45' | 2'28'27" | 9'22'25" |
| 1+37.38 | 12.38' | 10.15' | 14.60' | 2'54'12" | 12'16'37" |
| 1+79.83 | 42.45' | 34.63' | 49.84' | 9'57'19" | 22'13'56" |

NOTE: ROLL TYPE CURB & GUTTER TO BE CONSTRUCTED ON THE PAVEMENT SHOWN ON THIS SHEET. TOP OF CURB ELEVATIONS ARE GIVEN FOR FULL HEIGHT CURB.

Baughman ENGINEERING | SURVEYING | PLANNING | LANDSCAPE ARCHITECTURE

FALCON FALLS 2ND ADD. - PH. I
KITE CT.
LOTS 11-17, BLOCK D
 STA 0+00 TO STA 1+79.83

PROJECT NUMBER: 472-84264
 REVISIONS:

DESIGN: TJW
 DRAWN: TMS
 APPROVED: AEG
 DATE: 01/06
 SCALE: Noted
 SHEET: **11 OF 44**

FalconFalls2nd/Pl/Str6 05-10-E376