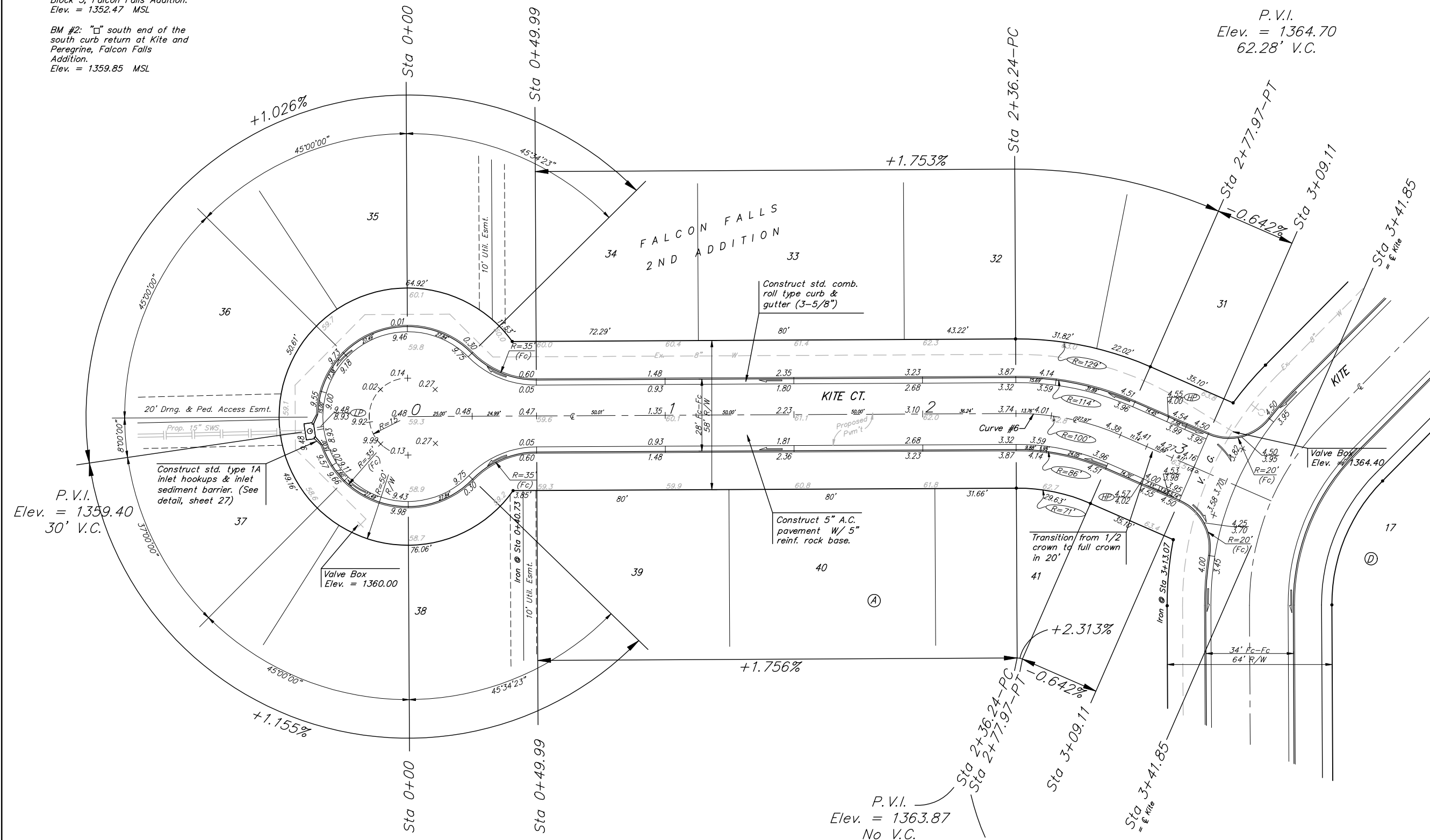
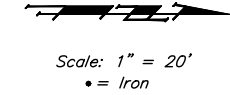


BENCHMARKS:
 BM #1: "□" CL face of catch basin, west side of Lot 4, Block 5, Falcon Falls Addition. Elev. = 1352.47 MSL

BM #2: "□" south end of the south curb return at Kite and Peregrine, Falcon Falls Addition. Elev. = 1359.85 MSL



P.V.I.
 Elev. = 1364.70
 62.28' V.C.

P.V.I.
 Elev. = 1359.40
 30' V.C.

P.V.I.
 Elev. = 1363.87
 No V.C.

P.V.I.
 Elev. = 1364.70
 52' V.C.

Curve #6
 Curve Data Based on Centerline
 Rad. = 100' Delta = 23° 54' 35" Tangent = 21.17'
 Arc = 41.73' L.C. = 41.43' Del/Pt. = 17.18887 Min.

Station	Arc	FACE CHORD LENGTHS		Defl.	T. Defl.
		8' Lt.	8' Rt.		
2+36.24	-	-	-	0°00'00"	0°00'00"
2+50.00	13.76'	16.77'	10.72'	3°56'31"	3°56'31"
2+75.00	25.00'	30.42'	19.45'	7°09'43"	11°06'14"
2+77.97	2.97'	3.62'	2.32'	0°51'03"	11°57'17"

NOTE: ROLL TYPE CURB & GUTTER TO BE CONSTRUCTED ON THE PAVEMENT SHOWN ON THIS SHEET. TOP OF CURB ELEVATIONS ARE GIVEN FOR FULL HEIGHT CURB.

		FALCON FALLS 2ND ADD. - PH. I	
KITE CT.		LOTS 31-41, BLOCK A	
STA 0+00 TO STA 3+41.85			
Baughman Company, P.A. 315 Elm St. W. 3rd Fl. Philadelphia, PA 19106-3400			
ENGINEERING SURVEYING PLANNING LANDSCAPE ARCHITECTURE			
PROJECT NUMBER 472-84264	DESIGN TJW	DRAWN TMS	
REVISIONS:	APPROVED ABC	DATE 01/06	
	SCALE Noted		
			12 OF 44
FalconFalls2nd/PhI/Ser7		05-10-E376	