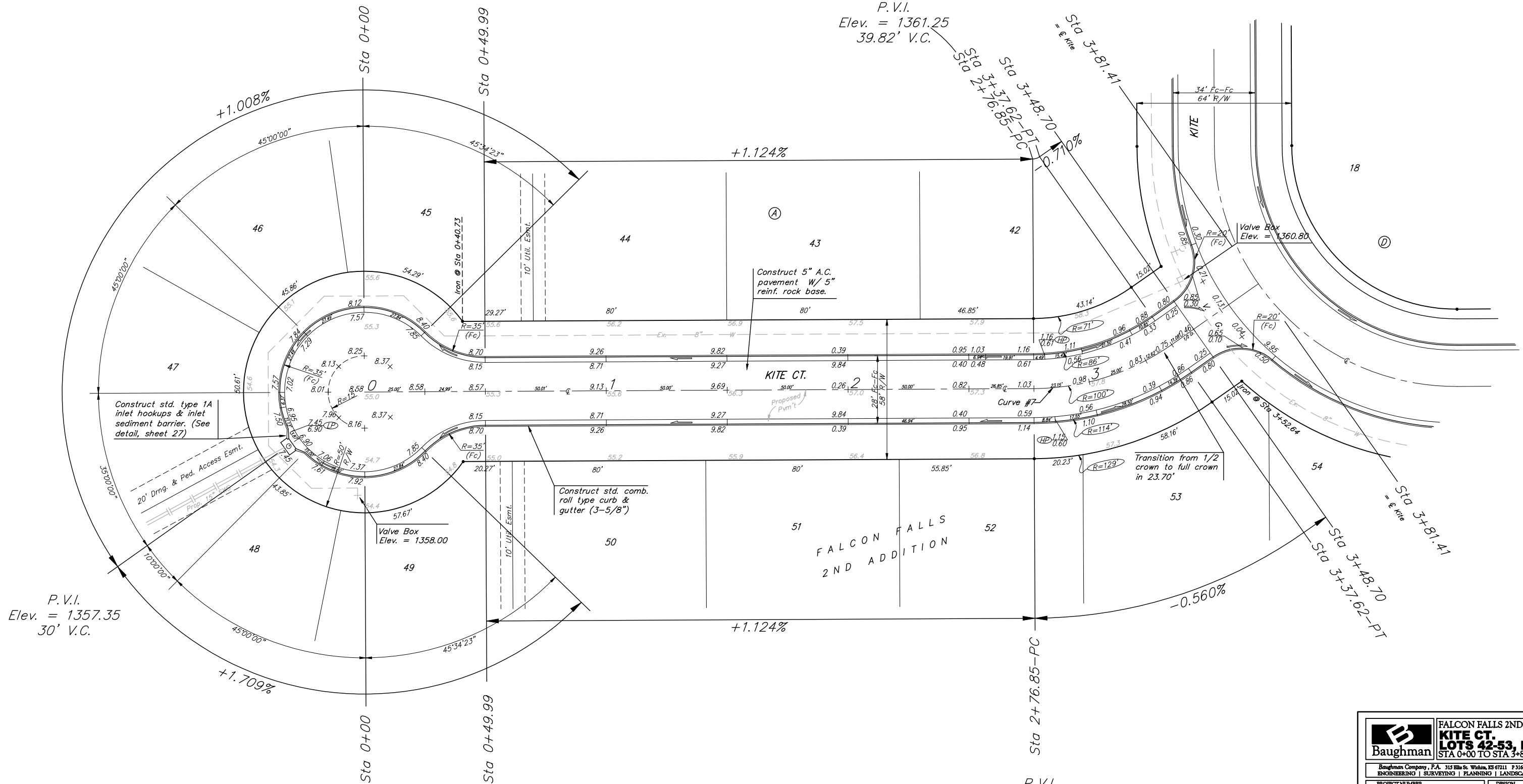
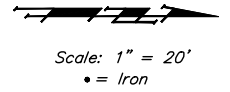


BENCHMARKS:
 BM #1: "□" CL face of catch basin, west side of Lot 4, Block 5, Falcon Falls Addition. Elev. = 1352.47 MSL

BM #2: "□" south end of the south curb return at Kite and Peregrine, Falcon Falls Addition. Elev. = 1359.85 MSL

Curve #7
 Curve Data Based on Centerline
 Rad. = 100' Delta = 34° 49' 00" Tangent = 31.35'
 Arc = 60.77' L.C. = 59.84' Def./Ft. = 17.18776 Min.

Station	FACE CHORD LENGTHS		Defl.	T. Defl.
	8' Lt.	8' Rt.		
2+76.85	-	-	0'00"00"	0'00"00"
3+00.00	23.15'	18.02'	28.18'	6'37"54"
3+25.00	25.00'	19.45'	30.42'	7'09"41"
3+37.62	12.62'	9.84'	15.39'	3'36"54"



P.V.I.
 Elev. = 1357.35
 30' V.C.

P.V.I.
 Elev. = 1361.25
 39.82' V.C.

P.V.I.
 Elev. = 1361.25
 52.78' V.C.

NOTE:
 ROLL TYPE CURB & GUTTER TO BE CONSTRUCTED ON THE PAVEMENT SHOWN ON THIS SHEET. TOP OF CURB ELEVATIONS ARE GIVEN FOR FULL HEIGHT CURB.

	FALCON FALLS 2ND ADD. - PH. I		
	KITE CT. LOTS 42-53, BLOCK A STA 0+00 TO STA 3+81.41		
Baughman Company, P.A. 315 Elm St. Wichita, KS 67211 P 316-262-7771 F 316-262-0149			
ENGINEERING SURVEYING PLANNING LANDSCAPE ARCHITECTURE			
PROJECT NUMBER 472-84264	DESIGN TJW	DRAWN TMS	
REVISIONS:	APPROVED AEG	DATE 01/06	
	SCALE Noted	SHEET	
		13	OF 44
FalconFalls2nd/PhI/Sheet			05-10-E376