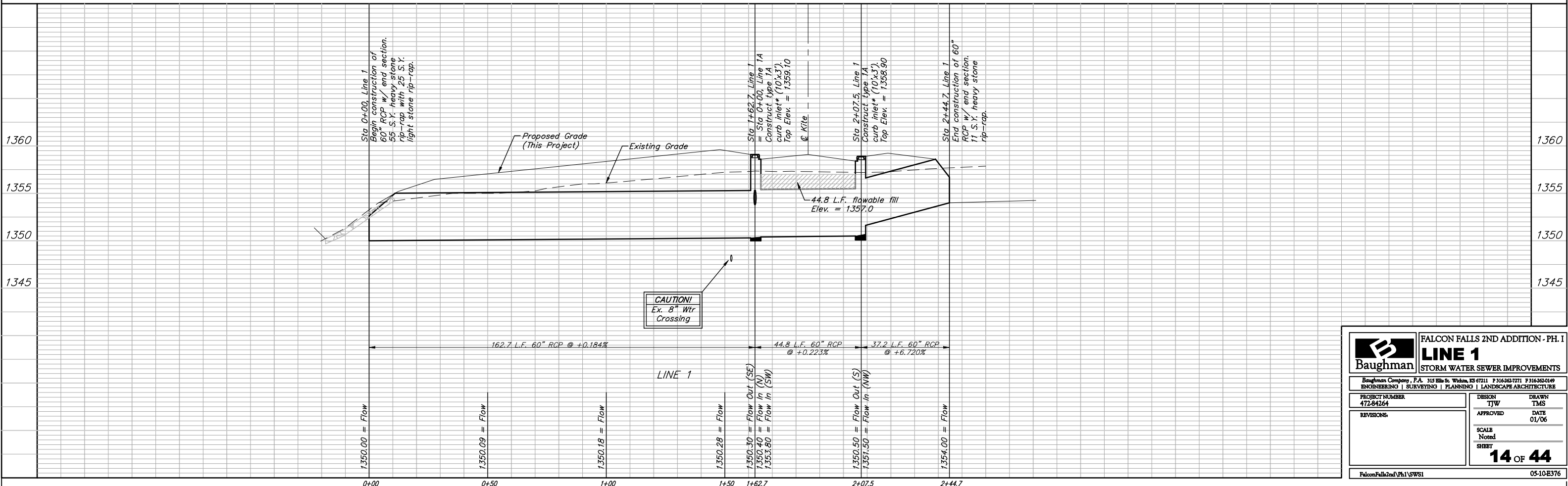
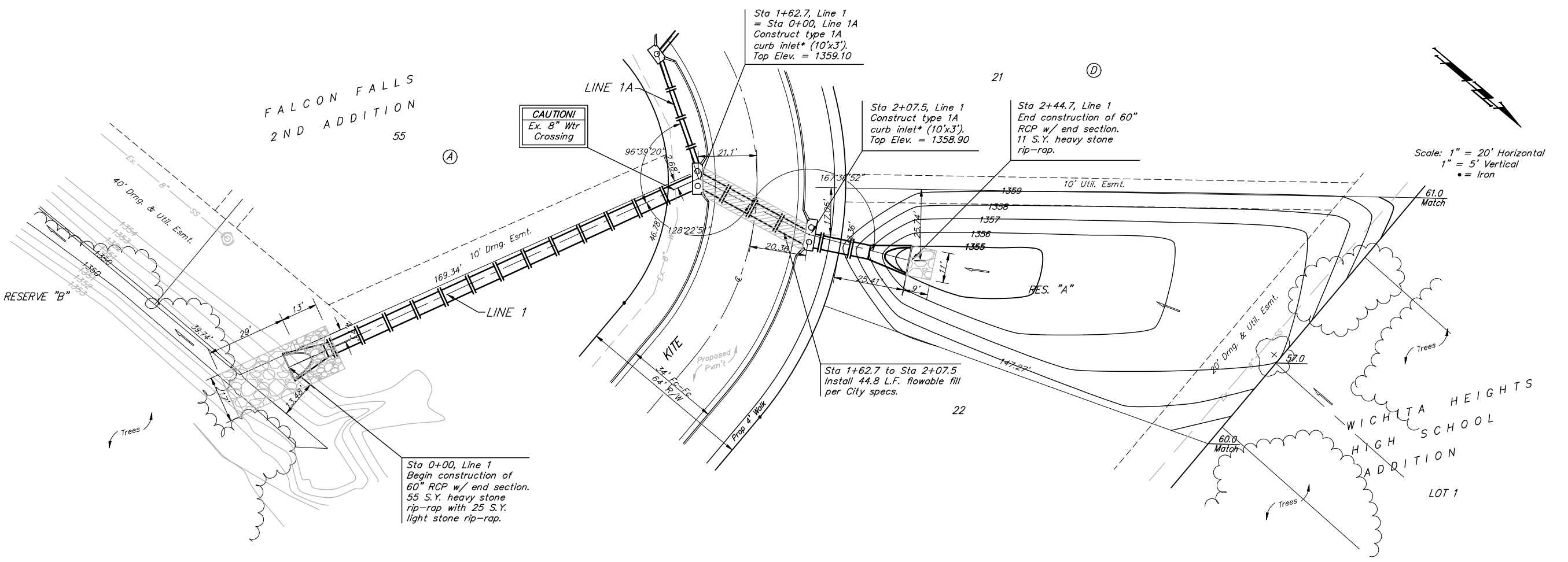


BENCHMARKS:
 BM #1: "□" CL face of catch basin, west side of Lot 4, Block 5, Falcon Falls Addition. Elev. = 1352.47 MSL
 BM #2: "□" south end of the south curb return at Kite and Peregrine, Falcon Falls Addition. Elev. = 1359.85 MSL



	FALCON FALLS 2ND ADDITION - PH. I LINE 1 STORM WATER SEWER IMPROVEMENTS	
	<small>Baughman Company, P.A. 315 Ellis St. Wichita, KS 67211 P 316-262-7771 F 316-262-0149 ENGINEERING SURVEYING PLANNING LANDSCAPE ARCHITECTURE</small>	
<small>PROJECT NUMBER</small> 472-84264	<small>DESIGN</small> TJW	<small>DRAWN</small> TMS
<small>REVISIONS</small>	<small>APPROVED</small> [Signature]	<small>DATE</small> 01/06
<small>SCALE</small> Noted <small>SHEET</small>	14 OF 44	
<small>Falcon Falls 2nd Ph. I SWS1</small>		<small>05-10-E376</small>