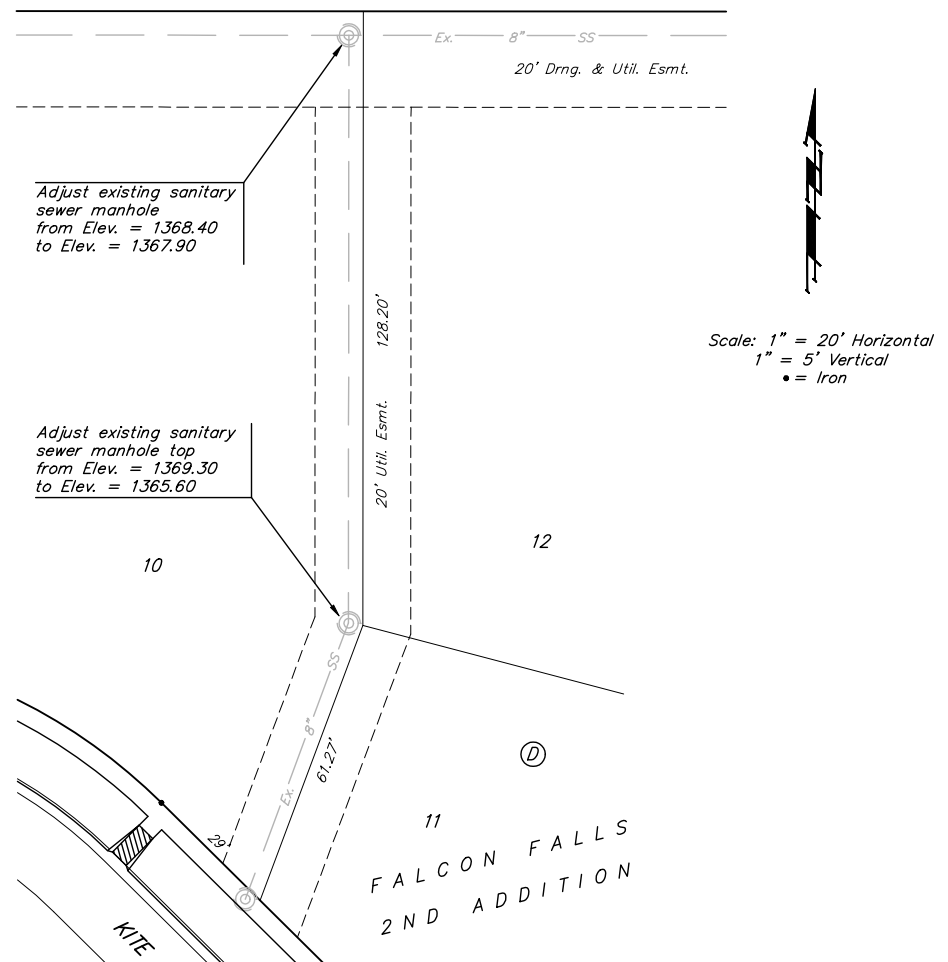
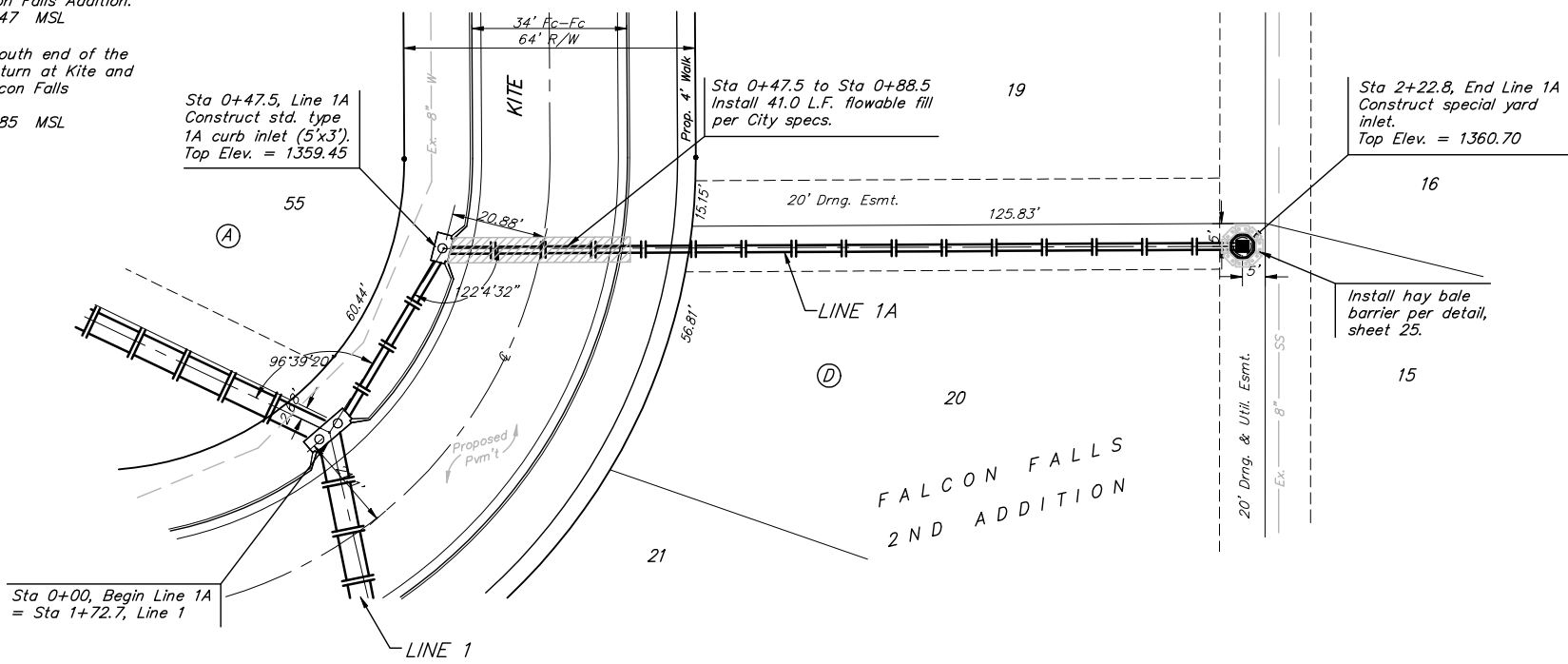


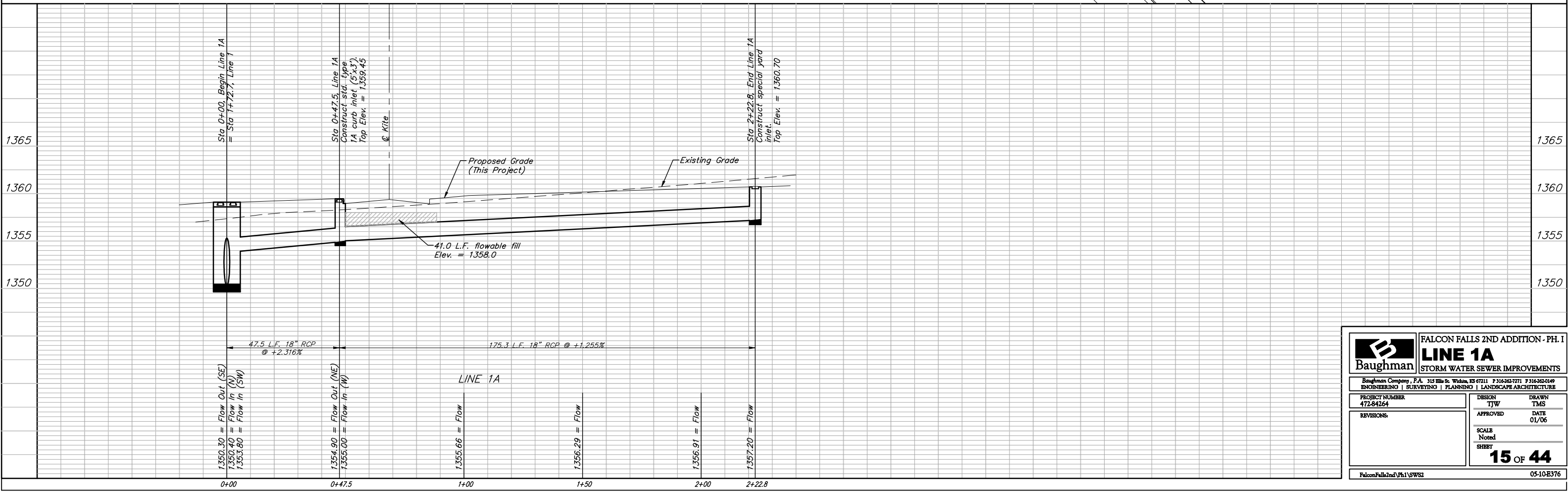
BENCHMARKS:

BM #1: "□" CL face of catch basin, west side of Lot 4, Block 5, Falcon Falls Addition. Elev. = 1352.47 MSL

BM #2: "□" south end of the south curb return at Kite and Peregrine, Falcon Falls Addition. Elev. = 1359.85 MSL



Scale: 1" = 20' Horizontal
1" = 5' Vertical
• = Iron



	FALCON FALLS 2ND ADDITION - PH. I LINE 1A STORM WATER SEWER IMPROVEMENTS	
	Baughman Company, P.A. 315 Ellis St. Wilkes, KS 67111 P 316-262-7771 F 316-262-0149 ENGINEERING SURVEYING PLANNING LANDSCAPE ARCHITECTURE	
PROJECT NUMBER 472-84264	DESIGN TJW	DRAWN TMS
REVISIONS	APPROVED	DATE 01/06
SCALE Noted SHEET		15 OF 44
FalconFalls2nd\Ph.I\SW2		05-10-E376