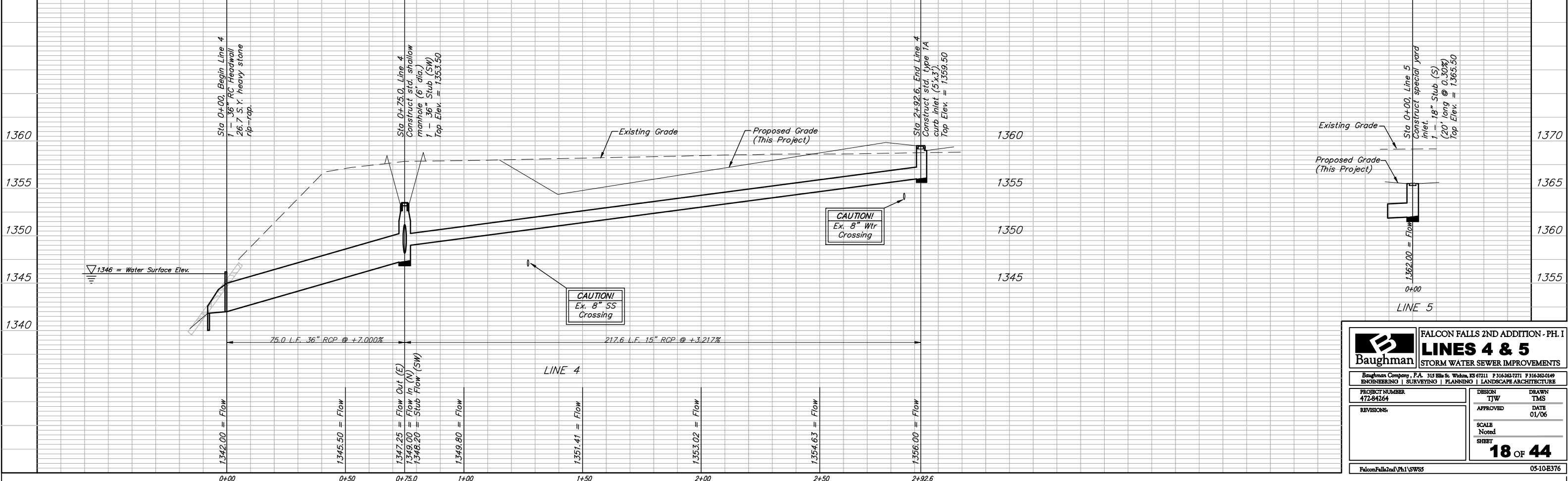
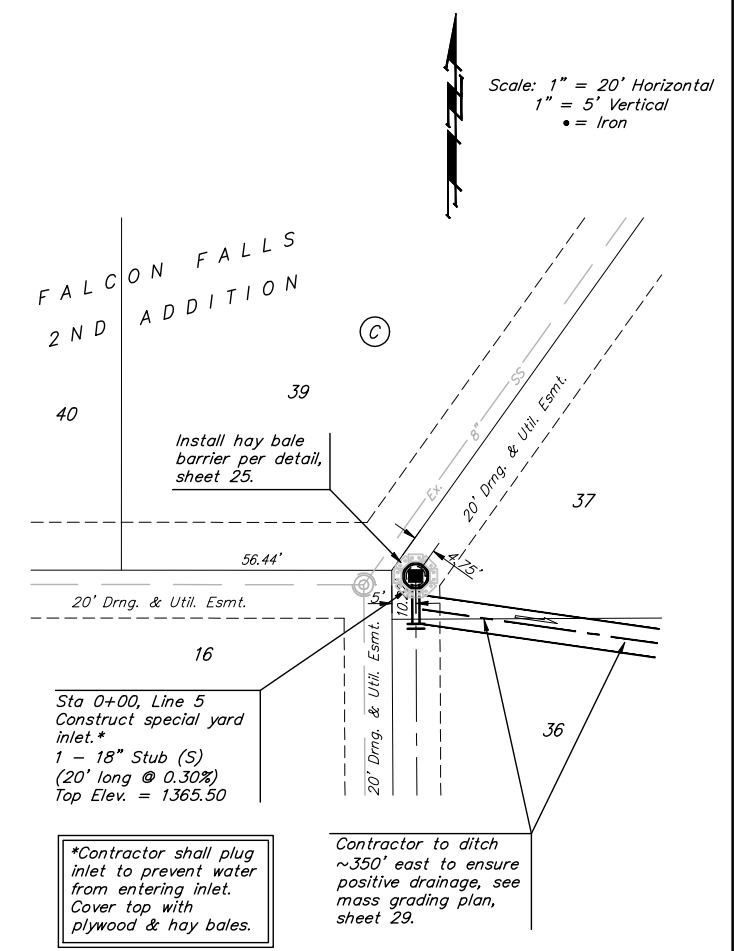
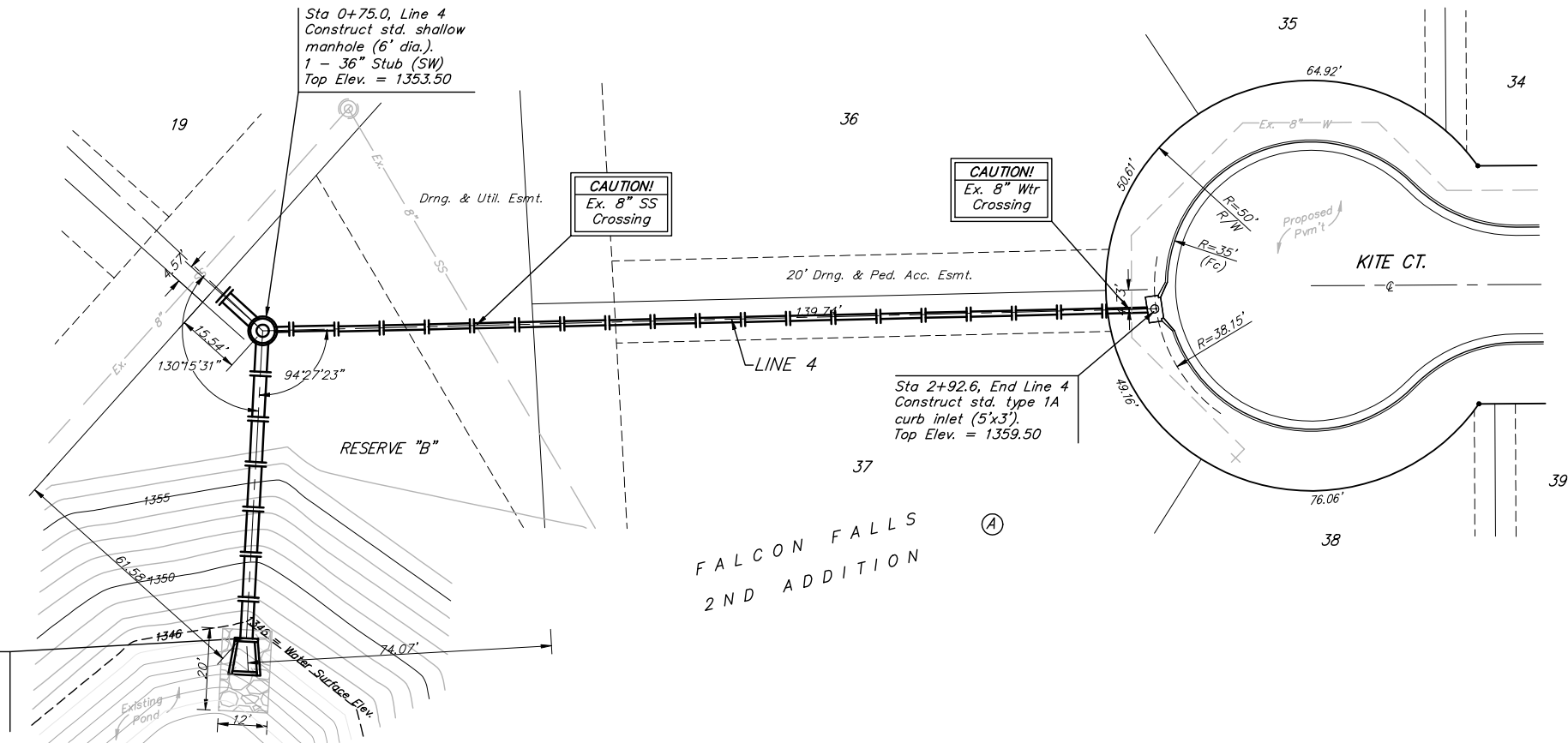


**BENCHMARKS:**  
 BM #1: "□" CL face of catch basin, west side of Lot 4, Block 5, Falcon Falls Addition. Elev. = 1352.47 MSL  
 BM #2: "□" south end of the south curb return at Kite and Peregrine, Falcon Falls Addition. Elev. = 1359.85 MSL



**Baughman** ENGINEERING | SURVEYING | PLANNING | LANDSCAPE ARCHITECTURE

**FALCON FALLS 2ND ADDITION - PH. I**  
**LINE 4 & 5**  
 STORM WATER SEWER IMPROVEMENTS

PROJECT NUMBER: 472-84264  
 DESIGN: TJW  
 DRAWN: TMS  
 APPROVED: [Signature]  
 DATE: 01/06

SCALE: Noted  
 SHEET: **18 OF 44**

FalconFalls2nd/Ph.I/SWS5 05-10-E376