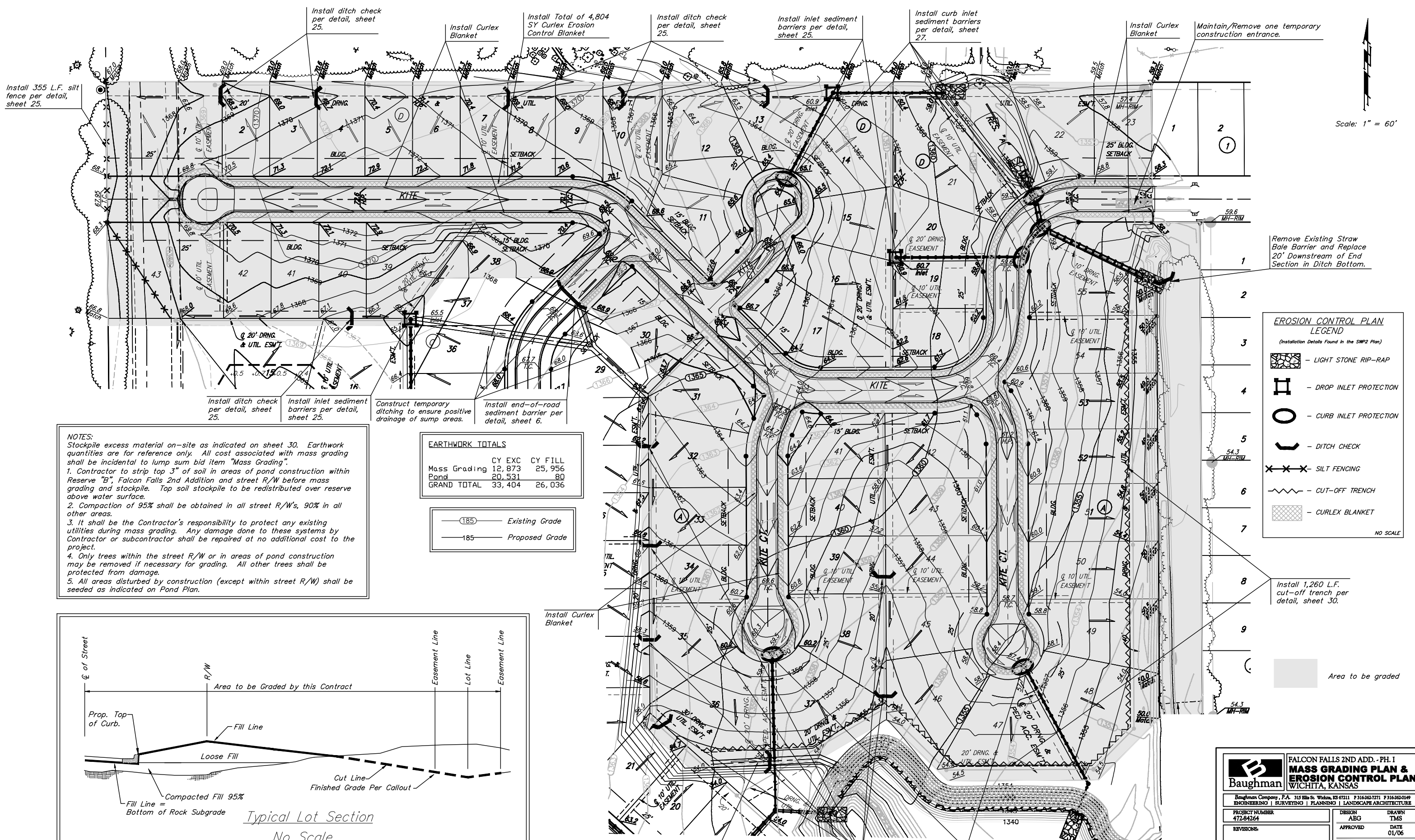


Scale: 1" = 60'



Install 355 L.F. silt fence per detail, sheet 25.

Install ditch check per detail, sheet 25.

Install Curlex Blanket

Install Total of 4,804 SY Curlex Erosion Control Blanket

Install ditch check per detail, sheet 25.

Install inlet sediment barriers per detail, sheet 25.

Install curb inlet sediment barriers per detail, sheet 27.

Install Curlex Blanket

Maintain/Remove one temporary construction entrance.

Install ditch check per detail, sheet 25.

Install inlet sediment barriers per detail, sheet 25.

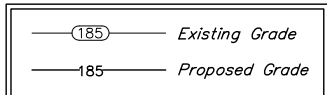
Construct temporary ditching to ensure positive drainage of sump areas.

Install end-of-road sediment barrier per detail, sheet 6.

NOTES:
 Stockpile excess material on-site as indicated on sheet 30. Earthwork quantities are for reference only. All cost associated with mass grading shall be incidental to lump sum bid item "Mass Grading".
 1. Contractor to strip top 3" of soil in areas of pond construction within Reserve "B", Falcon Falls 2nd Addition and street R/W before mass grading and stockpile. Top soil stockpile to be redistributed over reserve above water surface.
 2. Compaction of 95% shall be obtained in all street R/W's, 90% in all other areas.
 3. It shall be the Contractor's responsibility to protect any existing utilities during mass grading. Any damage done to these systems by Contractor or subcontractor shall be repaired at no additional cost to the project.
 4. Only trees within the street R/W or in areas of pond construction may be removed if necessary for grading. All other trees shall be protected from damage.
 5. All areas disturbed by construction (except within street R/W) shall be seeded as indicated on Pond Plan.

EARTHWORK TOTALS

	CY EXC	CY FILL
Mass Grading	12,873	25,956
Pond	20,531	80
GRAND TOTAL	33,404	26,036



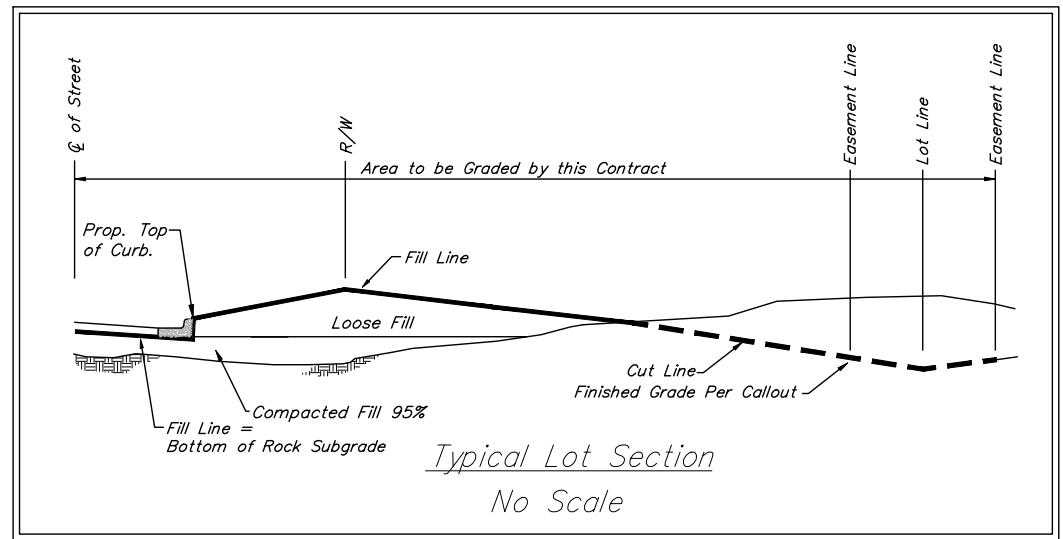
EROSION CONTROL PLAN LEGEND
 (Installation Details Found in the SMP Plan)

- LIGHT STONE RIP-RAP
- DROP INLET PROTECTION
- CURB INLET PROTECTION
- DITCH CHECK
- SILT FENCING
- CUT-OFF TRENCH
- CURLEX BLANKET

NO SCALE

Install 1,260 L.F. cut-off trench per detail, sheet 30.

Area to be graded



Install Curlex Blanket

Construct temporary ditching to ensure positive drainage of sump areas.

Install ditch check per detail, sheet 25.

Install curb inlet sediment barriers per detail, sheet 27.

Baughman FALCON FALLS 2ND ADD. - PH. I
MASS GRADING PLAN & EROSION CONTROL PLAN
 WICHITA, KANSAS

Baughman Company, P.A. 315 8th St. Wichita, KS 67211 P 316-262-7771 F 316-262-0149
 ENGINEERING | SURVEYING | PLANNING | LANDSCAPE ARCHITECTURE

PROJECT NUMBER 472-84264	DESIGN AEG	DRAWN TMS
REVISIONS:	APPROVED	DATE 01/06
	SCALE Noted	SHEET 29 OF 44

FalconFalls2nd/Mass1 05-10-E376