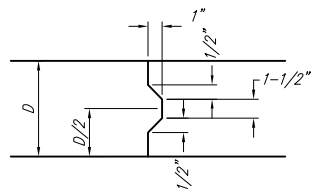
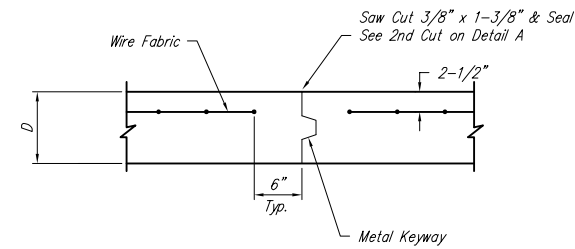


**EXPANSION JOINT**

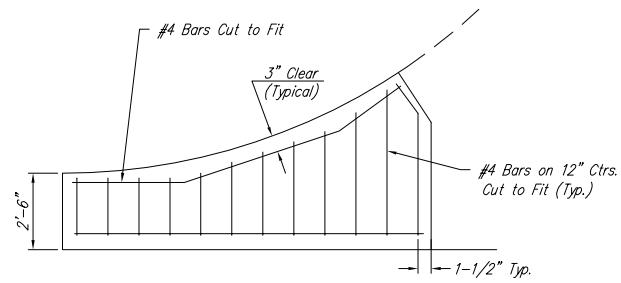
NOTE: Extra Thickness to be Subsidiary to Price of Square Yards Pavement



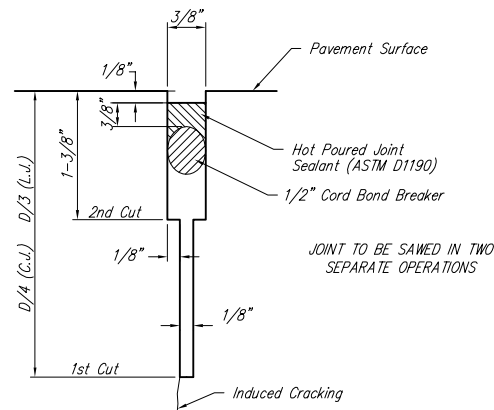
**KEYWAY DETAIL**



**OPTIONAL CONTRACTION JOINT**

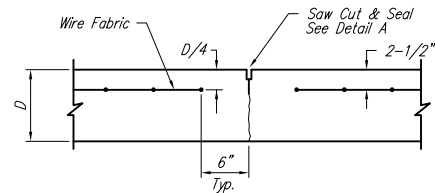


**WING REINFORCING DETAIL**

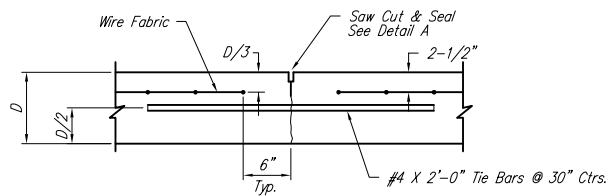


**SAW JOINT DETAIL**

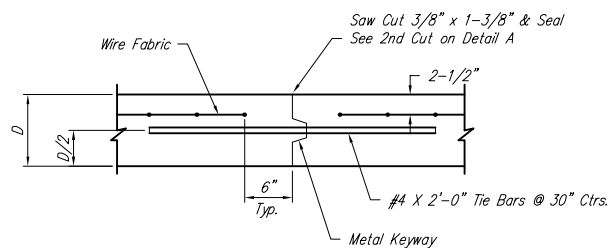
JOINT TO BE SAWED IN TWO SEPARATE OPERATIONS



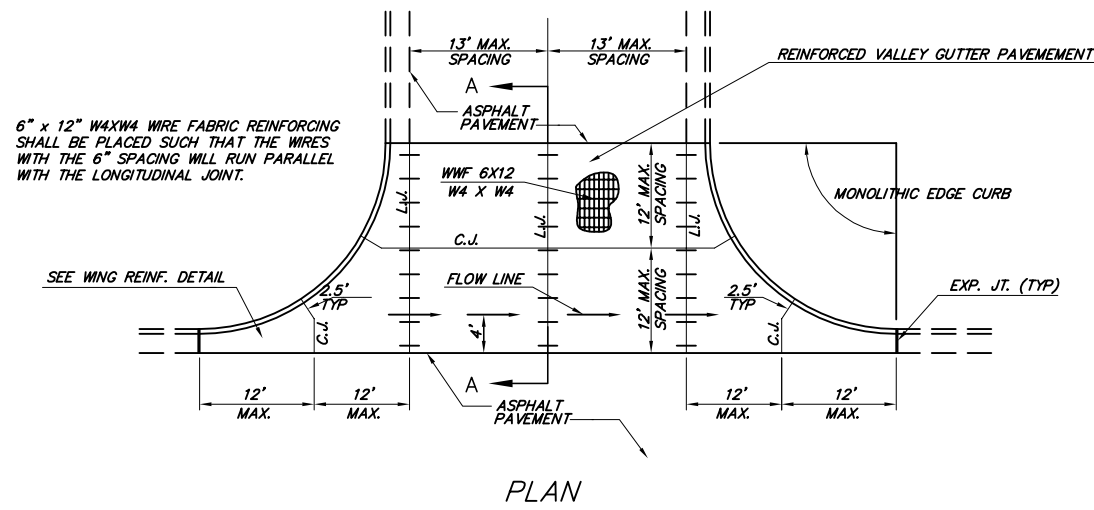
**CONTRACTION JOINT DETAIL (C.J.)**



**LONGITUDINAL JOINT DETAIL (L.J.)**

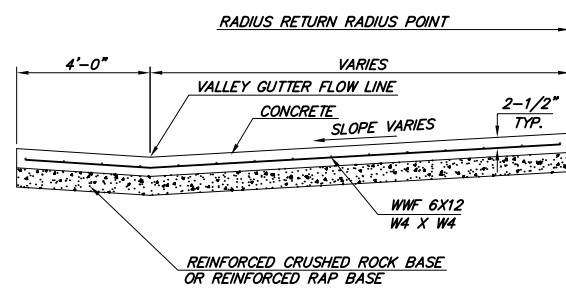


**OPTIONAL LONGITUDINAL JOINT DETAIL (L.J.)**



**PLAN**

6" x 12" WAXW4 WIRE FABRIC REINFORCING SHALL BE PLACED SUCH THAT THE WIRES WITH THE 6" SPACING WILL RUN PARALLEL WITH THE LONGITUDINAL JOINT.



**SECTION A-A**

**REINFORCED VALLEY GUTTER DETAIL**

<p>THE CITY OF WICHITA</p> <p>CITY ENGINEER'S OFFICE 435 NORTH MAIN STREET WICHITA, KANSAS 67202 (316) 268-4201 (316) 268-6114 FAX</p>	<p><b>VALLEY GUTTER DETAILS</b></p> <p><b>WHEELCHAIR RAMP DETAILS</b></p>	
	<p>PROJECT NUMBER 472-84270</p>	<p>OCA # 765957</p>
	<p>DATE MAR 96</p>	<p>SHEET 4 OF 30</p>