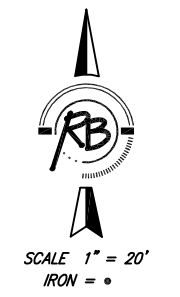
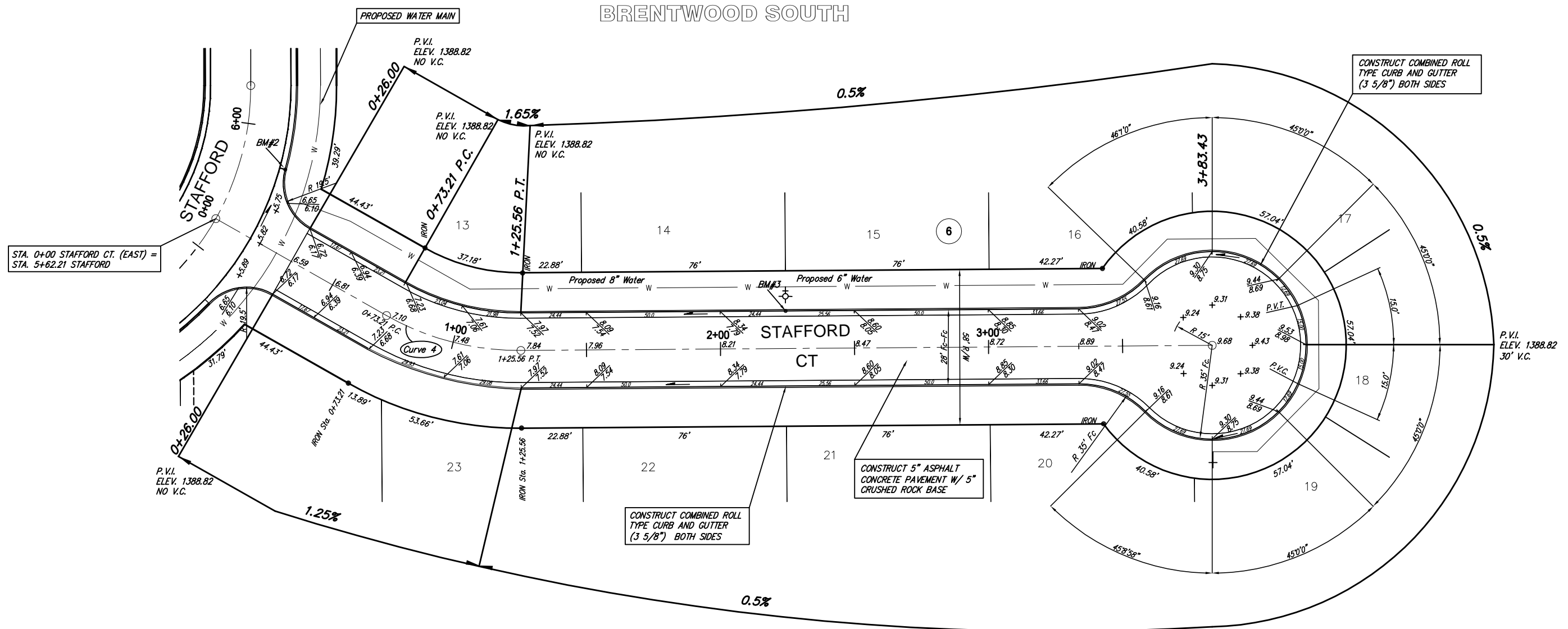


Curve 4  
Curve Data Based on Centerline  
Rad. = 100' Delta = 90°00'00" Tangent = 100.00'  
Arc = 52.36' L.C. = 141.42' Def/Ft. = 51.56608 Min.

Station	Arc	8 Lt.	8 Rt.	Def.	T. Def.
0+73.21	-	-	-	0°00'00"	0°00'00"
0+75.00	1.79'	4.03'	6.71'	1°32'18"	1°32'18"
1+00.00	25.00'	54.94'	91.57'	21°29'09"	23°01'27"
1+25.56	25.56'	56.11'	93.52'	21°58'02"	44°59'29"

Subdivision Bench Marks

No.	Street and Station	From CL	Description	Elevation
3	Stafford Ct (E), Sta. 2+24.40	14.0' LL	N Curb of Stafford Ct (E)	



NOTE: ROLL TYPE CURB AND GUTTER TO BE CONSTRUCTED ALONG PAVEMENT DEPICTED ON THIS SHEET

Brentwood South Addition, Paving Improvements  
Stoneybrook Court (West)  
WICHITA, KANSAS

Ruggles & Bohm, P.A.  
Engineering, Surveying, Land Planning

924 North Main (316) 264-8008  
Wichita, Kansas 67203 (316) 264-4621 fax  
www.rbkansas.com E-mail: info@rbkansas.com

DESIGN: KWL  
DRAWN: RLS  
REVIEW:  
UTILITY:  
DATE: Sept. 13, 2005

DRAWING FILE: paving {Stafford Ct (E)} PROJECT NUMBER: 472-84270

SHEET: 9 OF 30