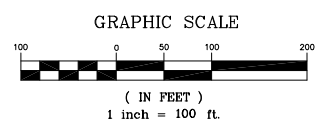
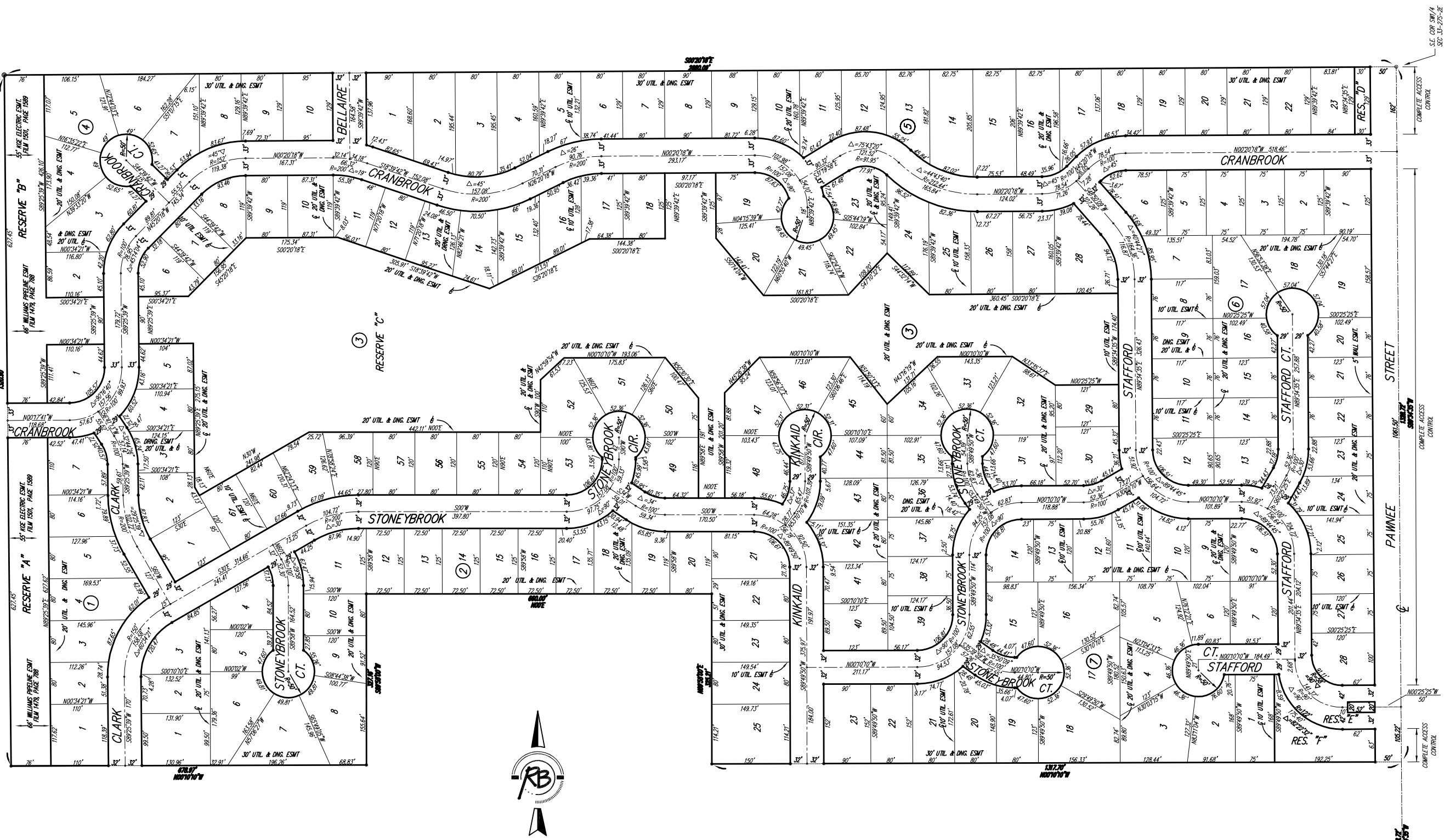


BRENTWOOD SOUTH ADDITION

WICHITA, SEDGWICK COUNTY, KANSAS



MINIMUM BUILDING PAD ELEVATION FOR LOWEST OPENING INTO STRUCTURES		
BLOCK	LOT NO.	ELEVATION (N.G.V.D.)
3	Lots 1-20, 47 Lots 50-61	1369

- △ = CITY OF WICHITA CONTROL THUMB (FOUND)
- = 1/2" REBAR W/GARBER CAP (FOUND)
- = 5/8" REBAR (FOUND)
- = 1/2" REBAR W/SRB CAP (SET)

BENCH MARK #1: USGS BRASS PLUG 28" S. & 530" W. OF CENTERLINE INTERSECTION OF CAPRI & PANNEE. ELEV.=1366.25 NGVD

BENCH MARK #2: CITY OF WICHITA STD. DISC. 20.0" W & 54.5" S. OF CENTERLINE INTERSECTION DALLON & PANNEE. ELEV.=1379.60

Please contact Western Resources (or its successor) Electric Transmission Engineering Department (currently 785-575-8219) before conducting any proposed construction activities that could place people, equipment, or facilities within Western Resources' easement, shown on this plat, designated as Film 1501, Page 1589, dated December 29, 1994.

Brentwood South Addition
FINAL PLAT
WICHITA, SEDGWICK COUNTY, KANSAS

Ruggles & Bohm, P.A.
Engineering, Surveying, Land Planning

924 North Main
Wichita, Kansas 67203
www.rbkansas.com

(316) 264-8008
(316) 264-4621 fax
E-mail: info@rbkansas.com

PROJECT NUMBER
472-84270

DESIGN	KWL	30 of 30
DRAWN	RLS	
REVIEW		
UTILITY		
DATE	Sept. 13, 2005	