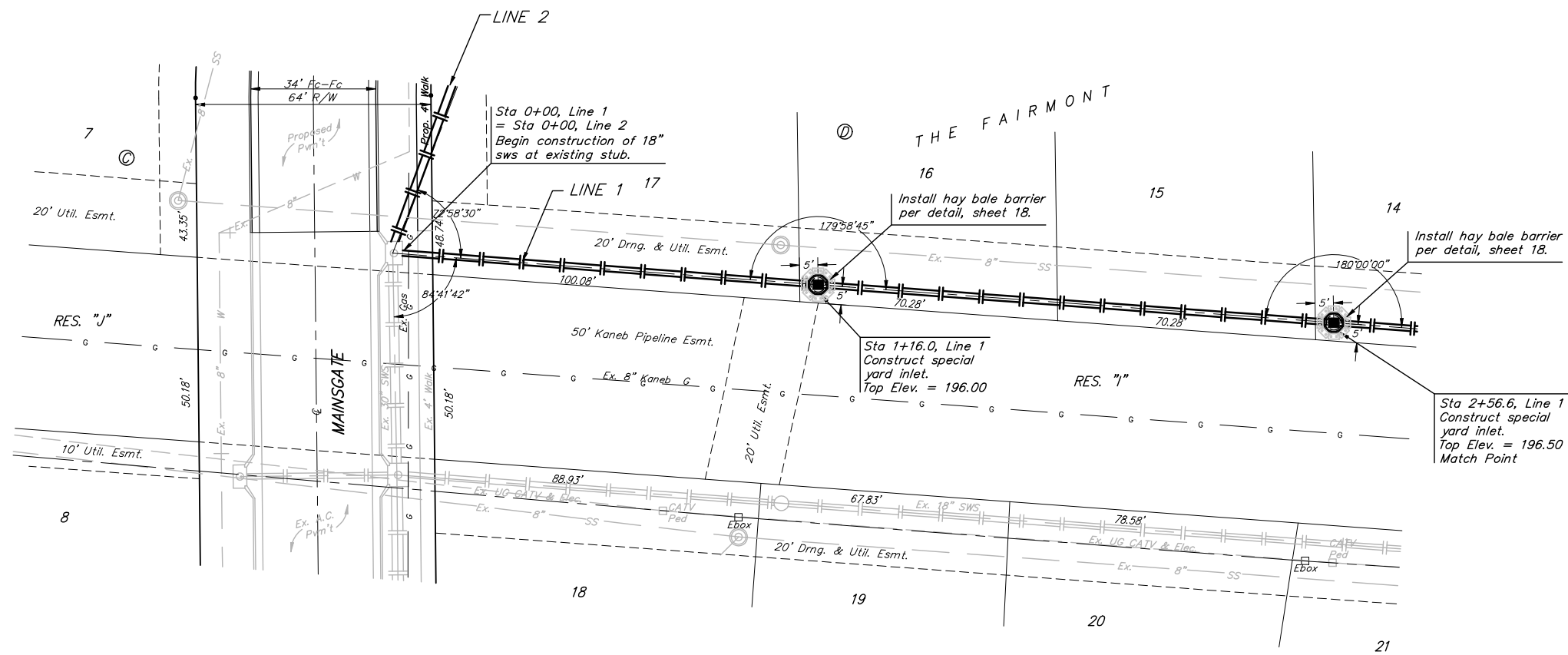
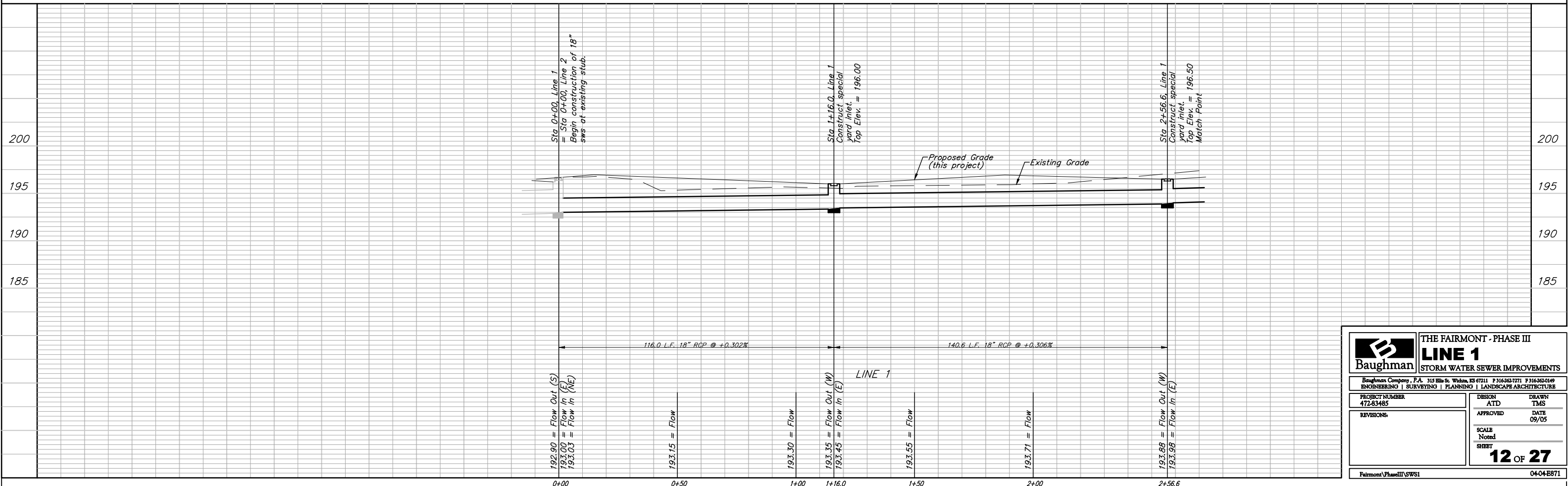


**BENCHMARKS:**  
 BM #1: "□" Cut on T.C., 12' west of east end of N curb return on the north drive entrance of the Church of the Magdalen.  
 Elev. = 190.48 (City Datum)  
 BM #2: RR spike on the west face of PP on the east side of 127th Street East, adjacent to the south line of The Fairmont Addition.  
 Elev. = 187.25 (City Datum)  
 BM #3: RR spike on the east face of PP on the west side of 127th Street East, 37' N and 13' E of the NE corner of Lot 1, Block H, The Fairmont Addition.  
 Elev. = 189.19 (City Datum)



Scale: 1" = 20' Horizontal  
 1" = 5' Vertical  
 ● = Iron



	<b>THE FAIRMONT - PHASE III</b> <b>LINE 1</b> <b>STORM WATER SEWER IMPROVEMENTS</b>	
	<small>Baughman Company, P.A. 315 Ellis St. Wilkes, KS 67111 P 316-262-7771 F 316-262-0149        ENGINEERING   SURVEYING   PLANNING   LANDSCAPE ARCHITECTURE</small>	
<small>PROJECT NUMBER 472-83485</small>	<small>DESIGN ATD</small>	<small>DRAWN TMS</small>
<small>REVISIONS</small>	<small>APPROVED</small>	<small>DATE 09/05</small>
	<small>SCALE Noted</small>	<small>SHEET <b>12 OF 27</b></small>
<small>FairmontPhaseIII/SWS1</small>		<small>04-04-E871</small>