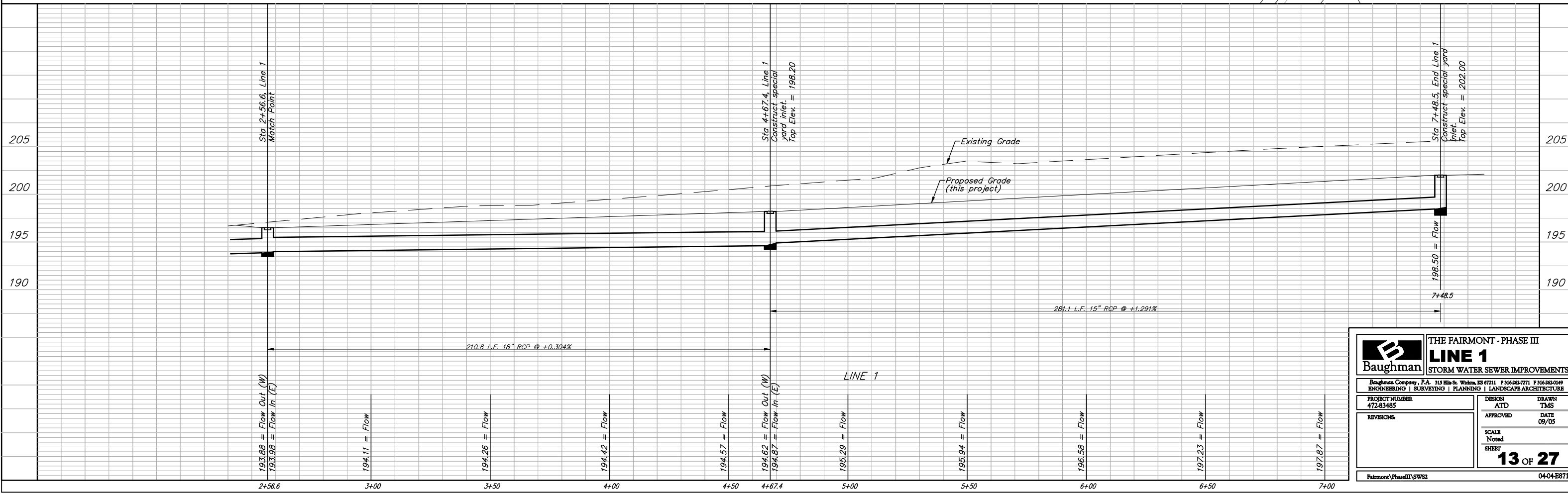
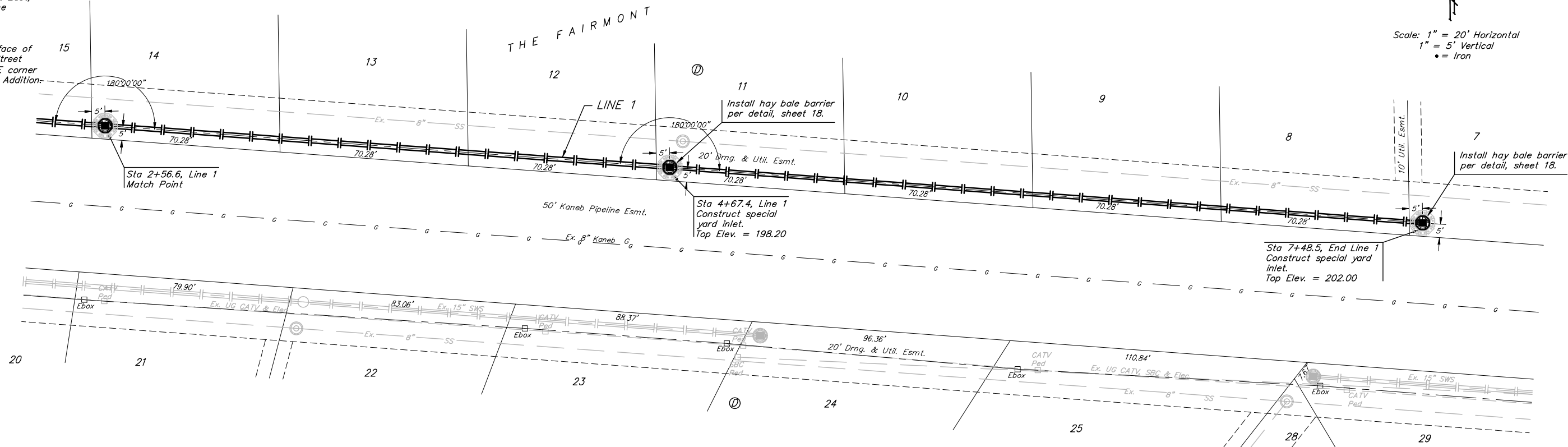


**BENCHMARKS:**  
 BM #1: "□" Cut on T.C., 12' west of east end of N curb return on the north drive entrance of the Church of the Magdalen.  
 Elev. = 190.48 (City Datum)

BM #2: RR spike on the west face of PP on the east side of 127th Street East, adjacent to the south line of The Fairmont Addition.  
 Elev. = 187.25 (City Datum)

BM #3: RR spike on the east face of PP on the west side of 127th Street East, 37' N and 13' E of the NE corner of Lot 1, Block H, The Fairmont Addition.  
 Elev. = 189.19 (City Datum)



		<b>THE FAIRMONT - PHASE III</b> <b>LINE 1</b> <b>STORM WATER SEWER IMPROVEMENTS</b>	
		<small>Baughman Company, P.A. 315 Ellis St. Wichita, KS 67211 P 316-262-7771 F 316-262-0149          ENGINEERING   SURVEYING   PLANNING   LANDSCAPE ARCHITECTURE</small>	
PROJECT NUMBER 472-83485	DESIGN ATD	DRAWN TMS	APPROVED DATE 09/05
REVISIONS:	SCALE Noted	SHEET <b>13 OF 27</b>	
<small>Fairmont Phase III SW82</small>			<small>04-04-E871</small>