

Water Main Extension Project Along Rock Road From 53rd Street North to K-254 Highway

Project No. 448-90196 O.C.A. No. 635378

CITY OF WICHITA, KANSAS

James L. Armour, P.E. City Engineer
October, 2007

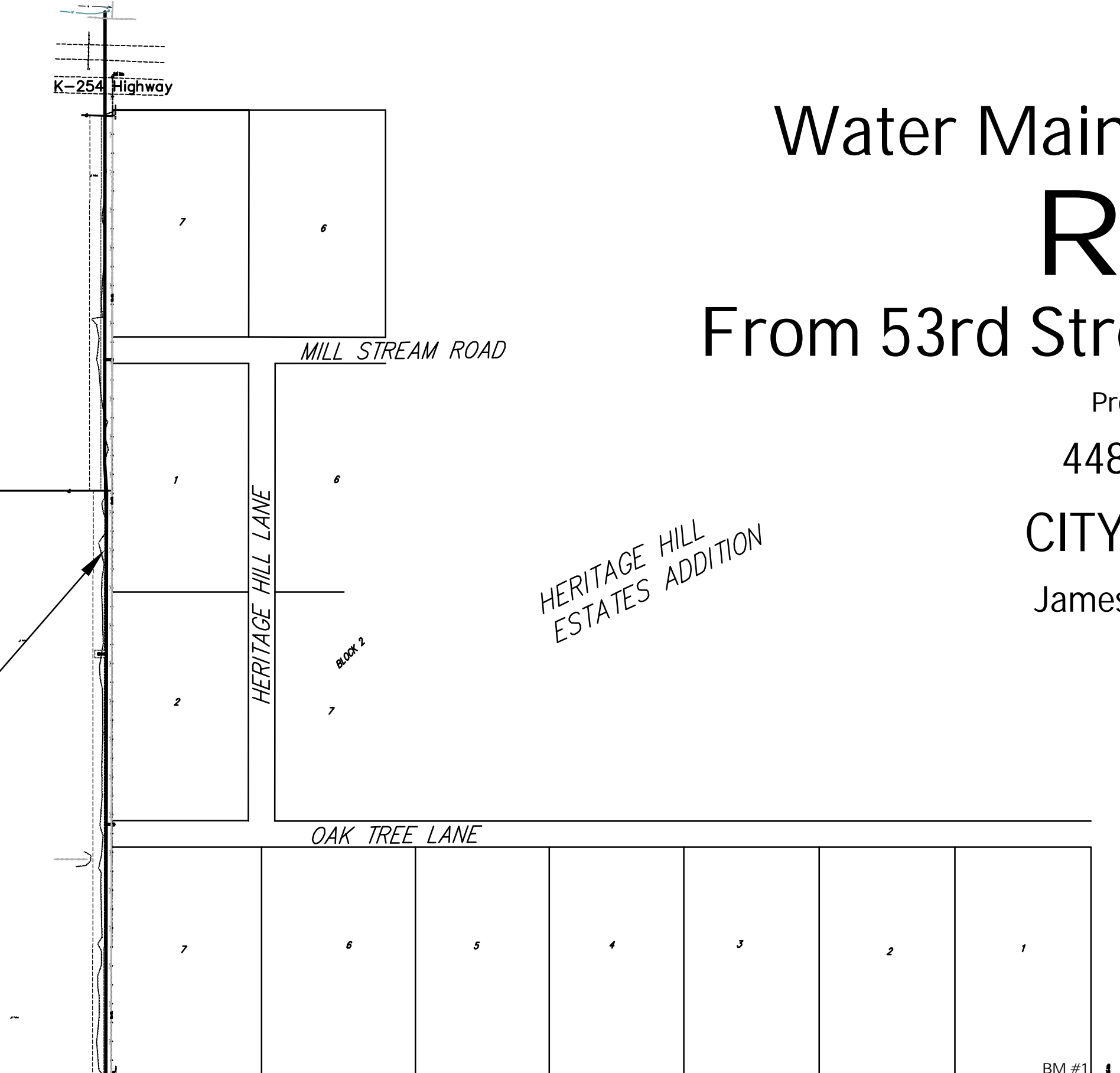
FINAL PLANS

Index

Title Sheet	1
General Notes	2
Water Details	3-4
Water Plans & Profile	5-13
Erosion Control Plan	14
Traffic Control Detail	15

Sunrise Christian Academy PY-KE-7

Glenda Pace PY-106-102



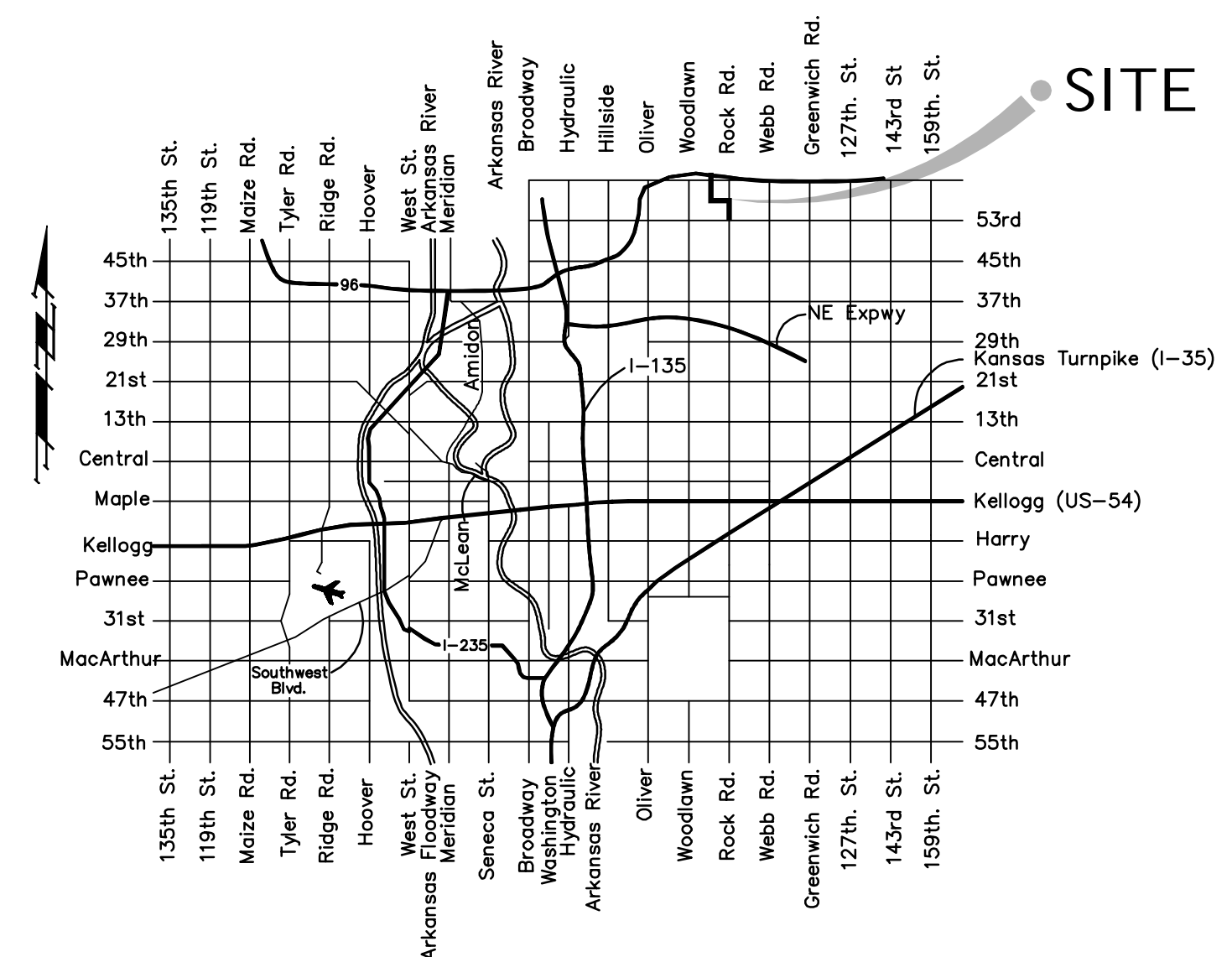
Scott Bergkamp PY-104-2

Stanley Bergkamp PY-104-3

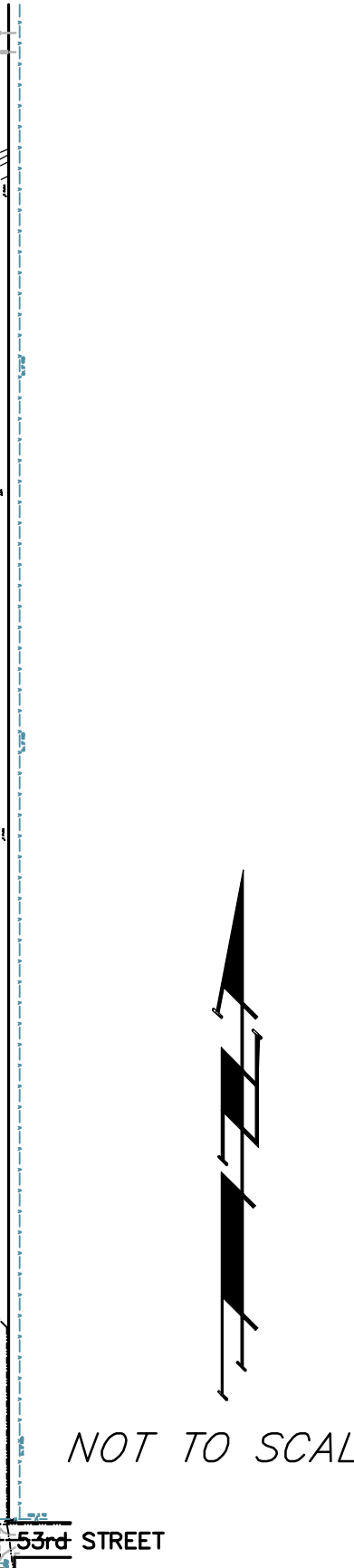
Stanley Bergkamp PY-104-1A

Linda Snook PY-104-1

SITE



VICINITY MAP



NOT TO SCALE

Benchmark

- BM#1 - Bent 60d Nail in Fence Corner Post, Located 50' West of the East ¼ Corner of Section 18, Township 26, Range 2 East. Elev. = 1423.34 MSL
- BM#2 - Railroad Spike on East Face of the Power Pole, Located 2325' North Side of the Center Line of 53rd Street and 50.5' West of the Center Line of Rock Road. Elev. = 1420.57 MSL
- BM#3 - Railroad Spike on East Face of the Power Pole, Located 1490' North Side of the Center Line of 53rd Street and 49.5' West of the Center Line of Rock Road. Elev. = 1413.39 MSL
- BM#4 - Railroad Spike on East Face of the Power Pole, Located 760' North Side of the Center Line of 53rd Street and 48' West of the Center Line of Rock Road. Elev. = 1409.80 MSL
- BM#5 - Railroad Spike on East Face of the Power Pole, Located 28.5' North Side of the Center Line of 53rd Street and 48' West of the Center Line of Rock Road. Elev. = 1407.57 MSL
- BM#6 - Hub Schwab Eaton Benchmark #9 Water Plans 53rd Street North. Elev. = 1406.12 MSL
- BM#7 - "□" Cut on the Northeast Corner of the Metal Base for the 2nd Metal High Line Pole West of Rock Road. Elev. = 1445.58 MSL
- BM#8 - "□" Cut on the Northeast Corner of the Metal Base for the 3rd Metal High Line Pole West of Rock Road. Elev. = 1435.25 MSL
- BM#9 - "□" Cut on Concrete Base for the Northeast Leg of the High Line Tower, Located 100' Southwest of the Center of the Section. Elev. = 1423.57 MSL