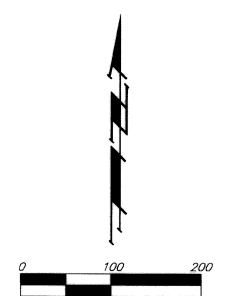
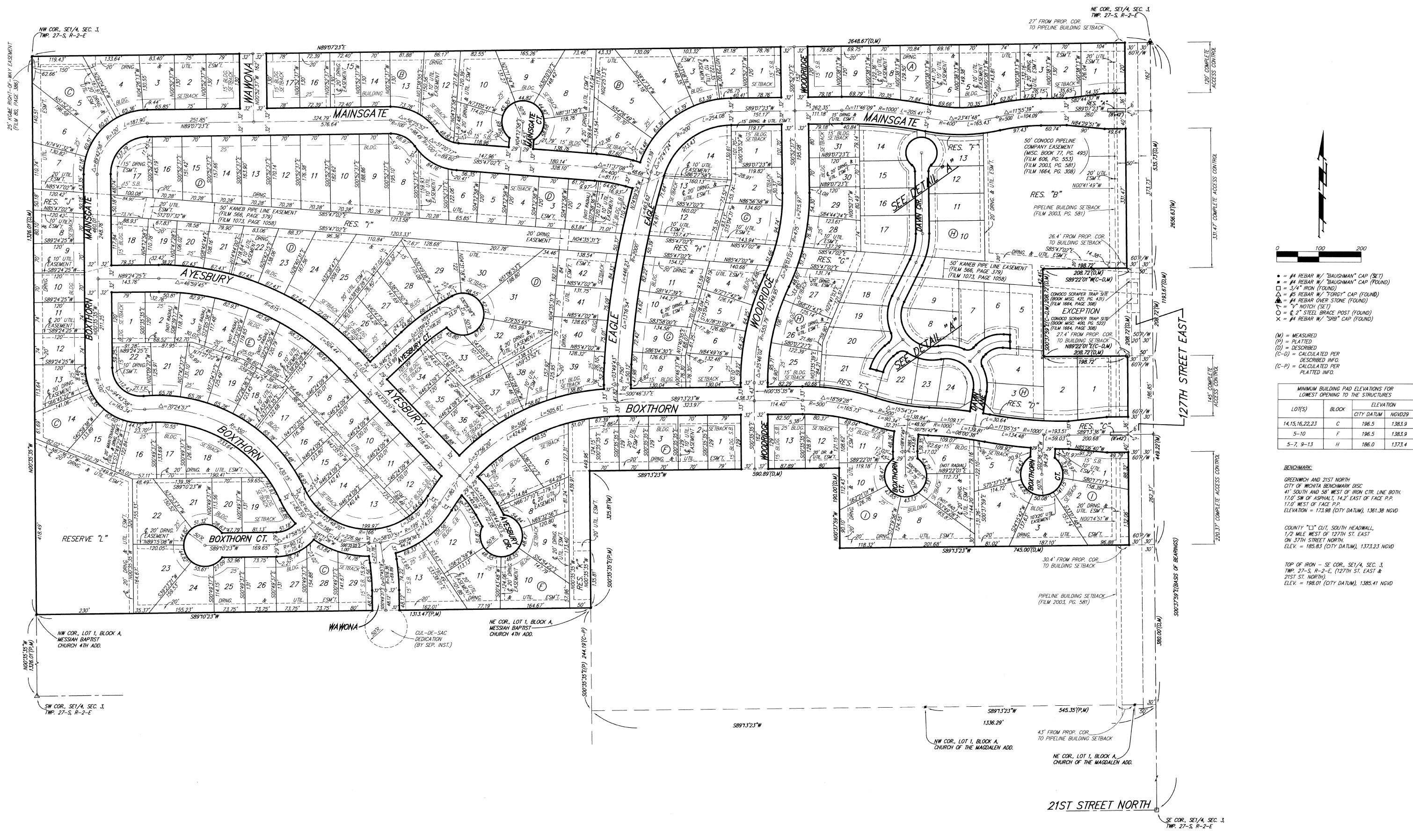


# THE FAIRMONT

## AN ADDITION TO WICHITA, SEDGWICK COUNTY, KANSAS



- = #4 REBAR W/ "BAUGHMAN" CAP (SET)
  - ◻ = #4 REBAR W/ "BAUGHMAN" CAP (FOUND)
  - ◻ = 3/4" IRON (FOUND)
  - ◻ = #5 REBAR W/ "FORGY" CAP (FOUND)
  - ◻ = #4 REBAR OVER STONE (FOUND)
  - = 2" NOTCH (SET)
  - = 2" STEEL BRACE POST (FOUND)
  - × = #4 REBAR W/ "SRB" CAP (FOUND)
- (M) = MEASURED  
 (P) = PLATTED  
 (D) = DESCRIBED  
 (C-D) = CALCULATED PER DESCRIBED INFO.  
 (C-P) = CALCULATED PER PLATTED INFO.

MINIMUM BUILDING PAD ELEVATIONS FOR LOWEST OPENING TO THE STRUCTURES		
LOT(S)	BLOCK	ELEVATION
14,15,16,22,23	C	196.5 1,383.9
5-10	F	196.5 1,383.9
5-7, 9-13	H	186.0 1,373.4

**BENCHMARK:**  
 GREENWICH AND 21ST NORTH  
 CITY OF WICHITA BENCHMARK DISC  
 41' SOUTH AND 58' WEST OF IRON CTR. LINE BOTH  
 17.0' SW OF ASPHALT, 14.2' EAST OF FACE P.P.  
 17.0' WEST OF FACE P.P.  
 ELEVATION = 173.98 (CITY DATUM), 1361.38 NGVD

**COUNTY "C" CUT, SOUTH HEADWALL,**  
 1/2 MILE WEST OF 127TH ST. EAST  
 ON 37TH STREET NORTH  
 ELEV. = 185.83 (CITY DATUM), 1373.23 NGVD

**TOP OF IRON - SE COR., SE1/4, SEC. 3,  
 TWP. 27-S, R-2-E, (127TH ST. EAST &  
 21ST ST. NORTH).**  
 ELEV. = 198.01 (CITY DATUM), 1385.41 NGVD

**NOTE:**  
 A master grading plan for drainage has been developed for this subdivision and is on file with the City of Wichita, Kansas. All drainage easements, right-of-ways, or reserves shall remain at established grades or as modified with the approval of the City Engineer of the City of Wichita, Kansas. No obstructions which impede the flow of this drainage system be allowed.