

# BRENTWOOD SOUTH 3RD ADDITION

## Wichita, Sedgwick County, Kansas

State of Kansas)  
Sedgwick County) SS

We, Ruggles & Bohm, P.A., Land Surveyors in aforesaid county and state, do hereby certify that, under the supervision of the undersigned, we have surveyed and platted "BRENTWOOD SOUTH 3RD ADDITION", Wichita, Sedgwick County, Kansas, being a replat of Lot 1, Block B, Brentwood South 2nd Addition, Wichita, Sedgwick County, Kansas, and that the accompanying plat is a true and correct exhibit of the property surveyed.

All public easements and dedications are hereby vacated by virtue of K.S.A. 12-512(b).

Ruggles & Bohm, P.A.

\_\_\_\_\_  
Thomas C. Ruggles  
Land Surveyor

Know all men by these presents that we, the undersigned, have caused the land described in the surveyor's certificate to be platted into a Lot, a Block, and a Street, to be known as "BRENTWOOD SOUTH 3RD ADDITION", Wichita, Sedgwick County, Kansas. Access Controls as indicated are hereby granted to the appropriate governing body. Utility Easements are hereby granted for the construction and maintenance of all public utilities. Drainage Easements are hereby granted to the public as indicated for drainage purposes. The street is hereby dedicated to and for the use of the public. A drainage plan has been developed for this plat; the property shall remain at established grades, or as modified with the approval of the City Engineer, and unobstructed to allow for the conveyance of storm water.

JBC Investments, Inc.

\_\_\_\_\_  
Stephen G. Miller  
President

State of Kansas)  
Sedgwick County) SS

The foregoing instrument acknowledged before me, this \_\_\_\_\_ day of \_\_\_\_\_, 200\_\_\_, by Stephen G. Miller, President of JBC Investments, Inc., on behalf of the corporation.

\_\_\_\_\_  
Notary Public

My appointment expires \_\_\_\_\_

We, the undersigned, holders of a mortgage on the above described property, do hereby consent to this plat of "BRENTWOOD SOUTH 3RD ADDITION", Wichita, Sedgwick County, Kansas, this \_\_\_\_\_ day of \_\_\_\_\_, 200\_\_\_.

Garden Plain State Bank

\_\_\_\_\_  
Patrick F. Waldon  
President

State of Kansas)  
Sedgwick County) SS

The foregoing instrument acknowledged before me, this \_\_\_\_\_ day of \_\_\_\_\_, 200\_\_\_, by Patrick F. Waldon, President of Garden Plain State Bank on behalf of the Bank.

\_\_\_\_\_  
Notary Public

My appointment expires \_\_\_\_\_

This plat of "BRENTWOOD SOUTH 3RD ADDITION", Wichita, Sedgwick County, Kansas, has been submitted to and approved by the Wichita-Sedgwick County Metropolitan Area Planning Commission, Wichita, Kansas.

Dated this \_\_\_\_\_ day of \_\_\_\_\_, 200\_\_\_.

\_\_\_\_\_  
Wichita-Sedgwick County Metropolitan Area Planning Commission

\_\_\_\_\_  
M.S. Mitchell  
Chair

\_\_\_\_\_  
John L. Schlegel  
Secretary

This plat approved and all dedications shown hereon accepted by the City Council of the City of Wichita, Kansas, this \_\_\_\_\_ day of \_\_\_\_\_, 200\_\_\_.

At the Direction of the City Council

\_\_\_\_\_  
Carl Brewer  
Mayor

\_\_\_\_\_  
Karen Sublett  
City Clerk

Reviewed in accordance with K.S.A. 58-2005 on this \_\_\_\_\_ day of \_\_\_\_\_, 200\_\_\_.

\_\_\_\_\_  
Tricia L. Robello, LS #1246  
Deputy County Surveyor  
Sedgwick County Kansas

Entered on transfer record this \_\_\_\_\_ day of \_\_\_\_\_, 200\_\_\_.

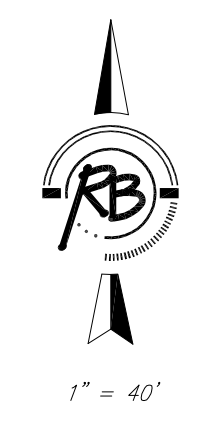
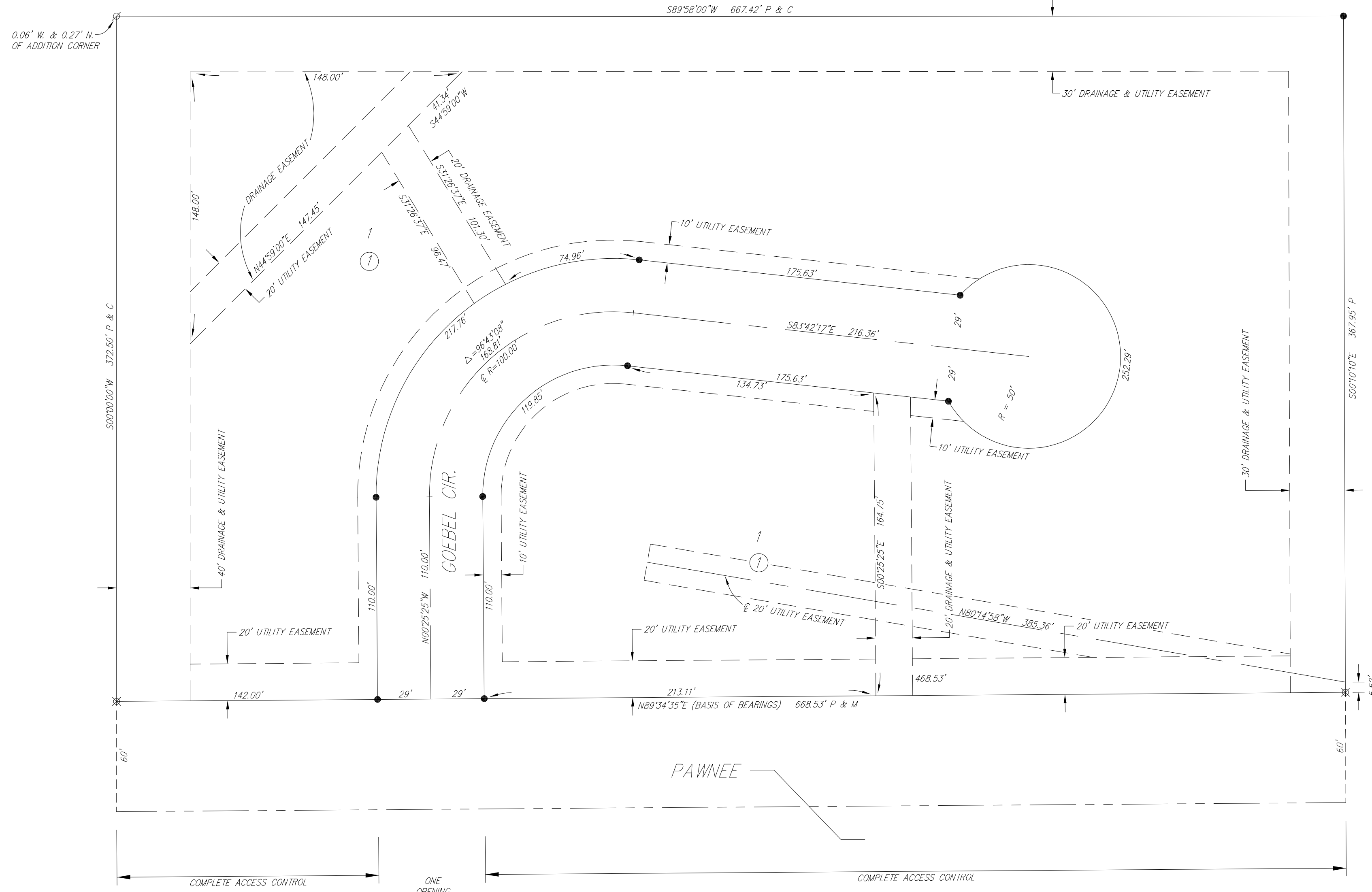
\_\_\_\_\_  
Don Brace  
County Clerk

State of Kansas)  
Sedgwick County) SS

This is to certify that this plat has been filed for record in the office of the Register of Deeds, this \_\_\_\_\_ day of \_\_\_\_\_, 200\_\_\_, at \_\_\_\_\_ o'clock \_\_\_\_\_ M, and is duly recorded.

\_\_\_\_\_  
Bill Meek  
Register of Deeds

\_\_\_\_\_  
Tonya Buckingham  
Deputy



C = Calculated  
M = Measured  
P = Plotted (Brentwood South 2nd Addition)

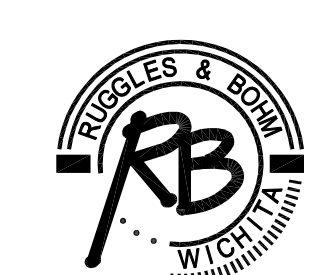
**SURVEY MARKER LEGEND**

- 1/2" REBAR W/BAUGHMAN CAP (FOUND)
- ⊗ 5/8" REBAR W/RUGGLES & BOHM CAP (FOUND)
- 5/8" REBAR W/RUGGLES & BOHM CAP (SET)

BENCH MARK: COW BENCHMARK AT THE SOUTHEAST CORNER OF THE INTERSECTION OF GRANBROOK AND SKINNER ELEV.=1334.02 (NGVD29)

ON SITE BENCH MARK: R.R. SPIKE ON EAST FACE OF POWER POLE 1,215 FEET EAST AND 46 FEET NORTH OF THE S.W. CORNER, SEC. 33, T27S, R2E ELEV.=1388.99 (NGVD29)

DWG FILE: SURVEY BASE  
PROJECT NO. 3161P  
DECEMBER 27, 2007



**Ruggles & Bohm, P.A.**  
Engineering, Surveying, Land Planning

924 North Main  
Wichita, Kansas 67203  
www.rbkansas.com

(316) 264-8008  
(316) 264-4621 fax  
E-mail: info@rbkansas.com