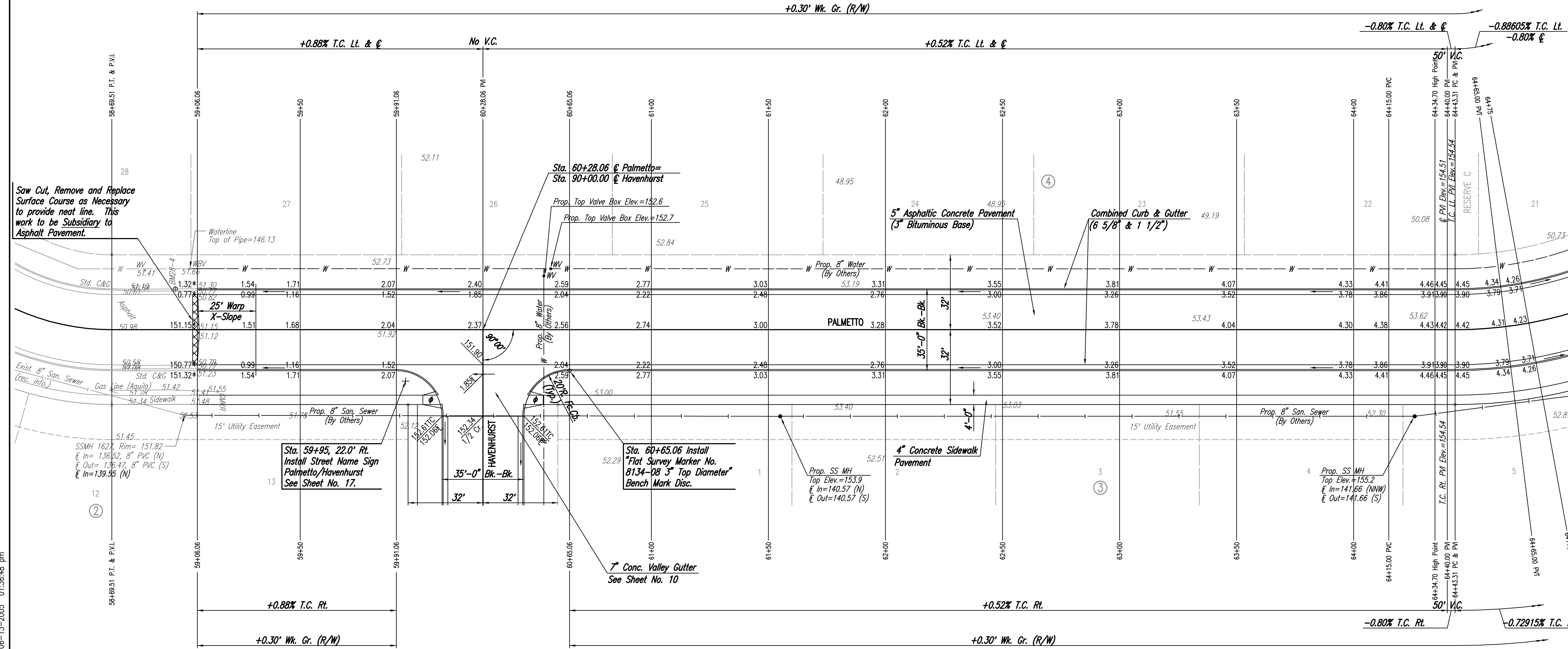
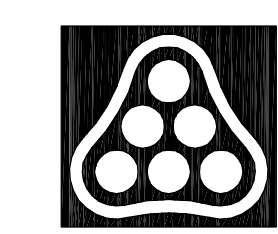


WATER VALVE BOX ELEVATIONS			
STREET	STATION	OFFSET	PROPOSED ELEVATION
PALMETTO	60+54.06	23.0' Lt.	152.6
PALMETTO	60+57.06	26.0' Lt.	152.7



DSNR: BLB OPER: BLS SCALE: 1"=20.00
 C:\2005\05059\000\05059-000-C-STR59-64 06-13-2005 01:36:48 pm

* Match Existing
 φ Construct Std. Wheelchair Ramp



No.	Revision	By	Date
AVALON PARK-PHASE 4 PALMETTO STA. 59+06.06 TO STA. 64+43.31 JAMES L. ARMOUR, P.E.-CITY ENGINEER CITY OF WICHITA PROJECT NO. 472-83838 Professional Engineering Consultants, P.A. 303 S. TOPEKA • WICHITA, KANSAS 67202 316-262-2691 • FAX 316-262-3003			
Designed by	BDB, BLB	Job No.	35-05059-000
Drawn by	BJS	Date	February 2005
			Sht. 7 of 22