

STREET AND INCIDENTAL DRAINAGE IMPROVEMENTS

TO SERVE

AVALON PARK-PHASE 5

PALMETTO-FROM THE E.L. OF LAKE RIDGE TO THE N.L. OF LOT 6, BLOCK 3
SIDEWALK-ALONG THE NORTH LINE OF PALMETTO

OCA NO. 765933

CITY OF WICHITA PROJECT NO. 472-83839

CITY OF WICHITA, KANSAS

JAMES L. ARMOUR, P.E. - CITY ENGINEER

INDEX OF SHEETS

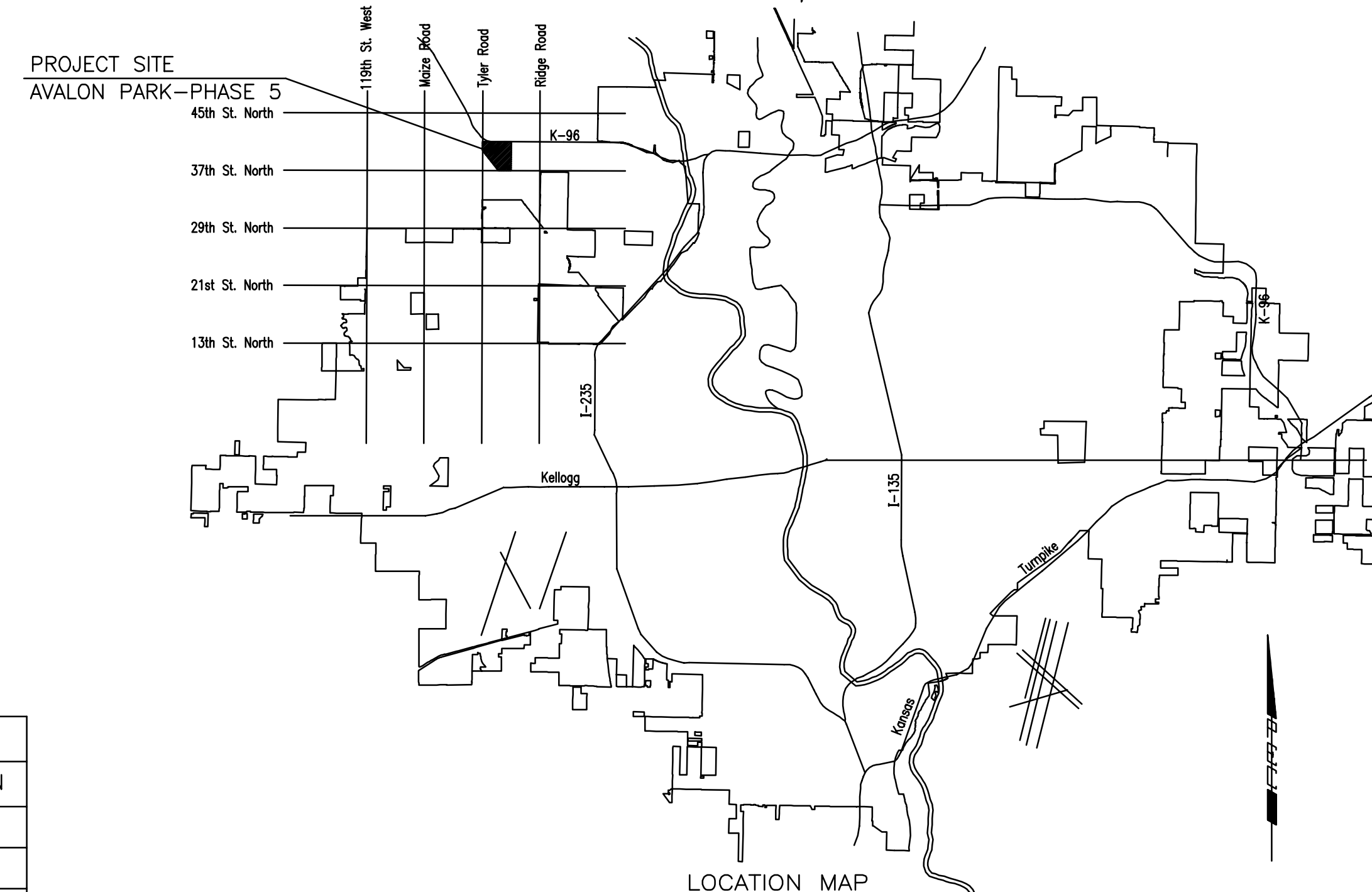
1. TITLE SHEET
2. KEY MAP AND GENERAL NOTES
3. PLAT
4. FOUR CORNER LOT GRADING PLAN
5. SITE GRADING PLAN
6. TYPICAL 35' BK.-BK. PAVEMENT DETAILS
- 7-8. PAVING PLAN-PALMETTO
9. MISCELLANEOUS PAVING DETAILS
10. PLAN/PROFILE-SWS LINE NO. 1
11. STD. TYPE 1A CURB INLET (5' OPENING)
12. MANHOLE FRAME AND COVER DETAILS
13. EROSION CONTROL PLAN
- 14-17. EROSION CONTROL DETAILS
- 18-22. CROSS SECTIONS

EARTHWORK

EXCAVATION	1,949 CU. YDS.
COMPACTED FILL	776 CU. YDS.
LOOSE FILL	1,018 CU. YDS.

THE VOLUME SHOWN FOR EXCAVATION INCLUDES AN ESTIMATED 1,026 C.Y. OF ON-SITE BORROW. THIS MATERIAL MAY BE OBTAINED FROM THE LOCATION(S) SHOWN ON SHEET NO. 2.

PROJECT LENGTH = 963 LIN. FT.



LOCATION MAP

JUNE 2005

PLANS PREPARED BY

PROFESSIONAL ENGINEERING CONSULTANTS, P.A.
ENGINEERS
WICHITA, KANSAS

CONSTRUCTION SCHEDULE/SEQUENCE

SANITARY SEWER
(468-83690 PHASE 3; 468-83691 PHASE 4; 468-83692 PHASE 5)
THE CONTRACTOR SHALL SEQUENCE THE WORK TO COMPLETE THE AVALON PHASE 4 SANITARY SEWER PROJECT BY JULY 1, 2005; AVALON PHASE 5 SANITARY SEWER PROJECT BY JULY 22, 2005; AND AVALON PHASE 3 SANITARY SEWER BY JULY 29, 2005.

WATER DISTRIBUTION SYSTEM IMPROVEMENTS
(448-89868 PHASE 3; 448-89869 PHASE 4; 448-89870 PHASE 5)
THE CONTRACTOR SHALL SEQUENCE THE WORK TO COMMENCE WITH CONSTRUCTION OF AVALON PHASE 4 WATER MAIN PROJECT UPON COMPLETION OF THE AVALON PHASE 4 SANITARY SEWER PROJECT, AND SHALL COMPLETE THE AVALON PHASE 4 WATER MAIN CONSTRUCTION BY JULY 13, 2005. THE CONTRACTOR SHALL THEN COMPLETE THE AVALON PHASE 5 WATER MAIN PROJECT BY AUGUST 5, 2005; AND THE AVALON PHASE 3 WATER MAIN PROJECT BY AUGUST 12, 2005. IT SHOULD BE NOTED THAT COORDINATION WILL NEED TO BE PERFORMED WITH THE INSTALLATION OF THE AVALON PARK PHASE 3 PAVING PROJECT - STORM WATER SEWER LINE 1 AND THE AVALON PARK PHASE 5 PAVING PROJECT - STORM WATER SEWER LINE 1, SO THAT THESE STORM WATER SEWER INSTALLATIONS ARE COMPLETE PRIOR TO INSTALLING THE PROPOSED WATER MAINS.

PAVING AND INCIDENTAL DRAINAGE
(472-83837 PHASE 3; 472-83838 PHASE 4; 472-83839 PHASE 5)
THE CONTRACTOR SHALL SEQUENCE THE WORK TO COMMENCE WITH CONSTRUCTION OF STORM WATER SEWER LINE NO. 1 OF THE AVALON PARK PHASE 5 PAVING PROJECT UPON COMPLETION OF THE AVALON PARK PHASE 5 SANITARY SEWER, AND SHALL COMPLETE INSTALLATION OF THIS LINE BY JULY 29, 2005. THE CONTRACTOR SHALL INSTALL STORM WATER SEWER LINE NO. 1 OF THE AVALON PARK PHASE 3 PAVING PROJECT UPON COMPLETION OF THE AVALON PARK PHASE 3 SANITARY SEWER, AND SHALL COMPLETE INSTALLATION OF THIS LINE BY AUGUST 5, 2005. THE CONTRACTOR SHALL COMPLETE THE REMAINDER OF THE PAVING AND INCIDENTAL DRAINAGE FOR AVALON PARK PHASES 3, 4, AND 5 BY OCTOBER 19, 2005.

STORM WATER DRAINS NO. 264 AND 265
(468-84011 SWD NO. 264; 468-84012 SWD NO. 265)
THE CONTRACTOR SHALL SEQUENCE HIS WORK TO COMPLETE STORM WATER DRAINS NO. 264 AND 265 BY OCTOBER 19, 2005.

SUBDIVISION BENCH MARKS (SBM)				
NO.	STREET AND STATION	FROM C	DESCRIPTION	ELEVATION
1	PALMETTO, STA. 75+36.34	17.5' LT.	EAST END, NORTHEAST RETURN, LAKE RIDGE	
2	PALMETTO, STA. 81+24.26	17.5' LT.	ON BK. OF CURB, 14.5' FROM SE COR. LOT12, BLOCK 3	

THE COST OF THE BENCH MARK DISC, INCLUDING INSTALLATION, SHALL BE INCIDENTAL TO THE CURB.