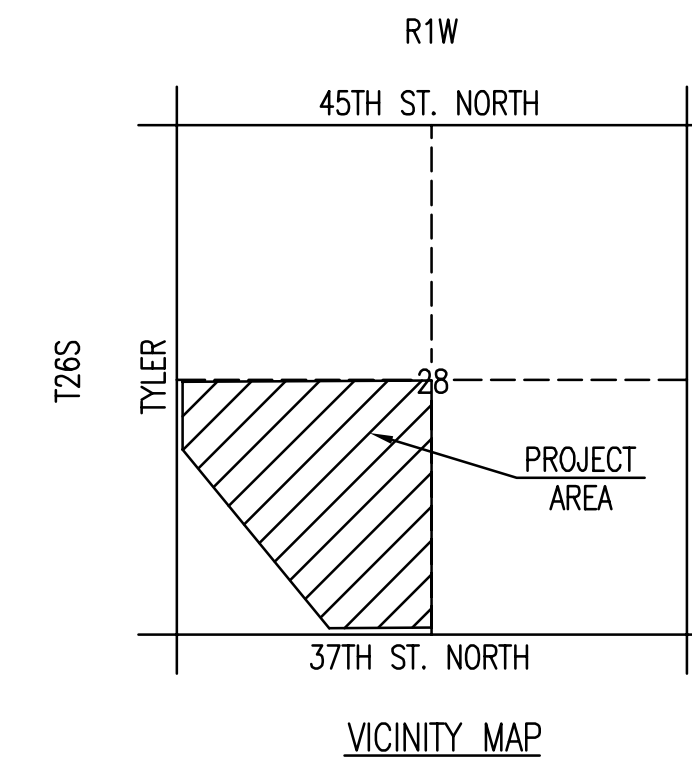


FOUR CORNER PLAN FOR AVALON PARK

AN ADDITION TO WICHITA
SEDGWICK COUNTY, KANSAS

SCALE: 1" = 100'
• = 3/4" IRON PIPE W/PEC CAP UNLESS OTHERWISE NOTED



LEGEND

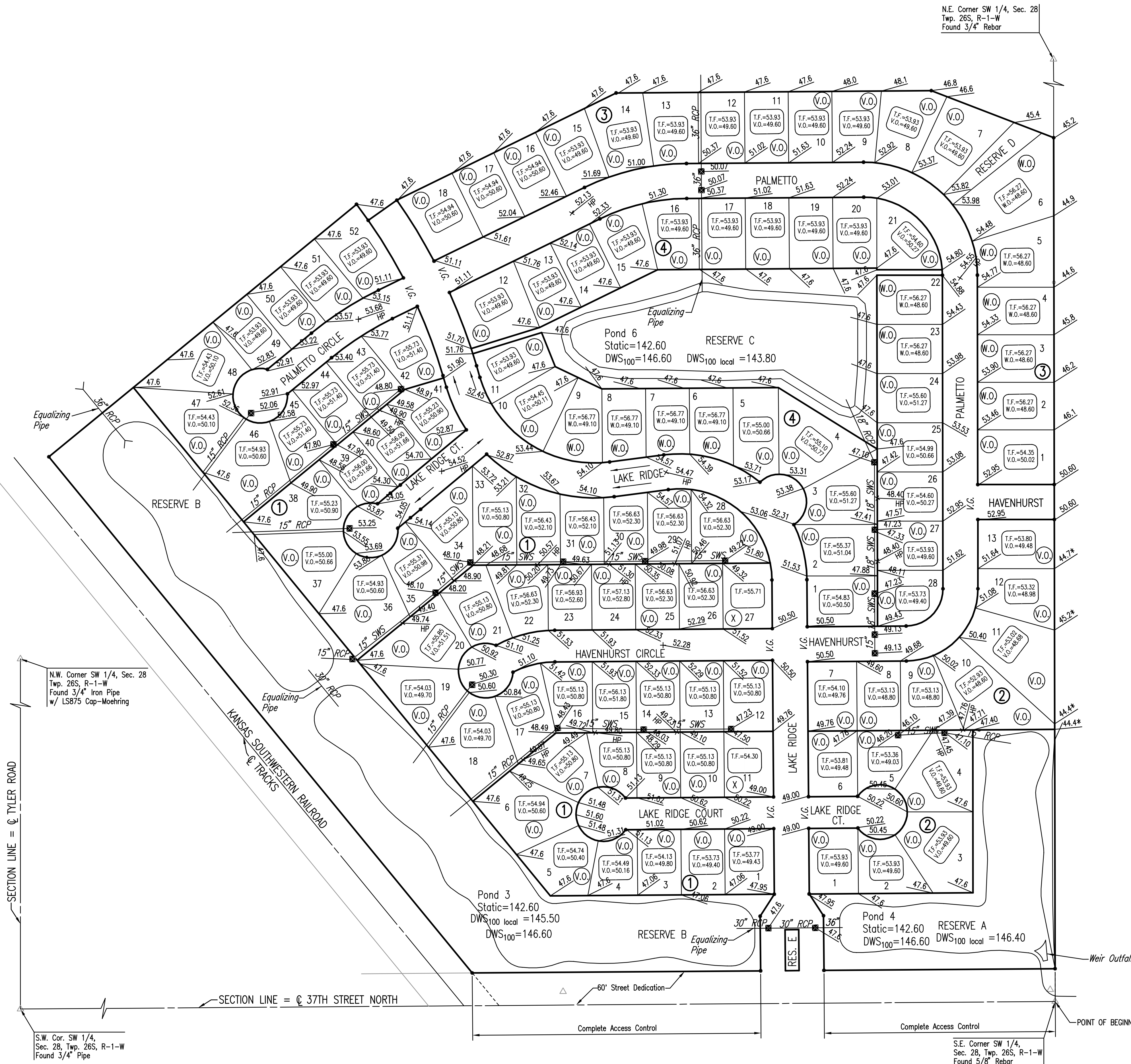
- (X) STD. BASEMENT
- (W.O.) WALK-OUT BASEMENT
- (V.O.) VIEW-OUT BASEMENT
- STORM WATER FLOW
- 158.0 SPOT ELEVATION
- W.O. WALK-OUT
- V.O. VIEW-OUT
- T.F. TOP OF FOUNDATION

VO OR WO WAS CONSIDERED ACCEPTABLE IF THE TOP OF FOUNDATION WAS 5' OR LESS ABOVE THE FRONT PROPERTY LINE.

MINIMUM OPENINGS	ELEVATION (N.G.V.D.)	CITY DATUM
BLOCK 1		
LOTS 1-6, 18-19	1336.0	148.6
LOTS 36-37, 46-52	1349.6	149.6
LOTS 7-17, 20-22, 33-35	1338.2	150.8
LOTS 38-45	1338.3	150.9
LOTS 23, 31-32	1339.0	151.6
LOTS 24-30	1339.7	152.3
BLOCK 2		
LOTS 1-4, 10-13	1336.0	148.6
LOTS 5-9	1336.2	148.8
BLOCK 3		
LOTS 1-6	1336.0	148.6
LOTS 7-18	1349.6	149.6
BLOCK 4		
LOTS 4-9, 22-25	1336.0	148.6
LOTS 1-3, 26-28	1336.8	149.4
LOTS 10-21	1349.6	149.6

REVISED FEBRUARY 6, 2004

DSNR- BLB OPER- BJS SCALE: 1"=100.00
 C:\2005\05060\000\05060-000-C-4CRNR-A.dwg 06-13-2005 03:15:02 pm



No.	Revision	By	Date
	AVALON PARK-PHASE 5		
4-CORNER LOT GRADING PLAN (FOR INFORMATION ONLY)			
JAMES L. ARMOUR, P.E.-CITY ENGINEER CITY OF WICHITA PROJECT NO. 472-83839			
Professional Engineering Consultants, P.A. 303 S. TOPEKA • WICHITA, KANSAS 67202 316-262-2691 • FAX 316-262-3003			
Designed by	BDB, BLB	Job No.	35-05060-000
Drawn by	BJS	Date	February 2005
			Sht. 4 of 22

