

PLAN	CHECKED	DATE
	CHECKED	

PROFILE	CHECKED	DATE
	CHECKED	

DSNR: BLB OPER: BJS SCALE: 1"=20.00  
 C:\2005\05060\000\05060-000-C-SWSLINE 06-13-2005 03:20:19 pm

SWD #264 (By Others)  
 (COW Proj. No. 468-84011)  
 Static Pool=144.0  
 DWS<sub>100</sub>=146.6

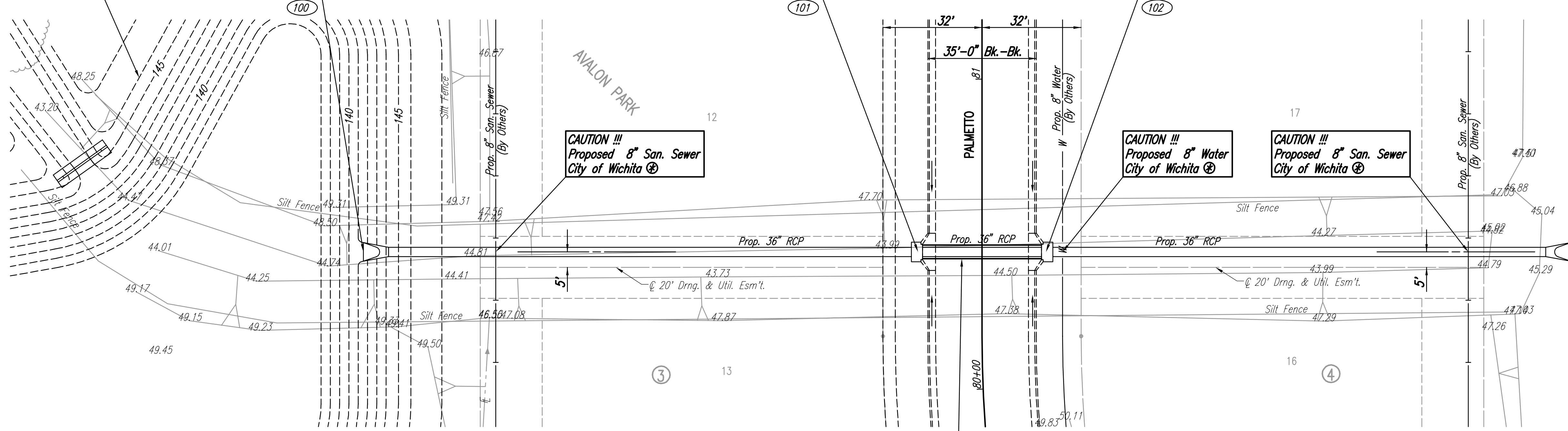
Sta. 8+21.0 SWS Line No. 1  
 Begin 36" RCP Construction @  
 Install 179.0 L.F. 36" RCP (S)  
 (Including End Section)

Sta. 10+00.0 SWS Line No. 1=  
 @ Palmetto Sta. 80+45.26, 20.67' Lt.  
 Const. Std. Type 1A Curb Inlet  
 L=5'-0", W=3'-0"  
 Top Elev.=150.13  
 Install 41.3 L.F. 36" RCP (S)  
 See Sheet No. 11.

Sta. 10+41.3 SWS Line No. 1=  
 @ Palmetto Sta. 80+45.26, 20.67' Rt.  
 Const. Std. Type 1A Curb Inlet  
 L=5'-0", W=3'-0"  
 Top Elev.=150.13  
 Install 169.5 L.F. 36" RCP (S)  
 See Sheet No. 11.

Sta. 12+10.8 SWS Line No. 1  
 End 36" RCP Construction  
 (Install End Section)

SCALE: 1"=20'



POINT	COORDINATE LIST	
	NORTH	EAST
100	11,720.6791	12,003.6369
101	11,541.6345	12,004.9494
102	11,500.2957	12,005.2525
103	11,330.8371	12,006.4947

100 = COORDINATE POINT NO.  
 SEE SHEET NO. 3 FOR PLAT COORDINATES

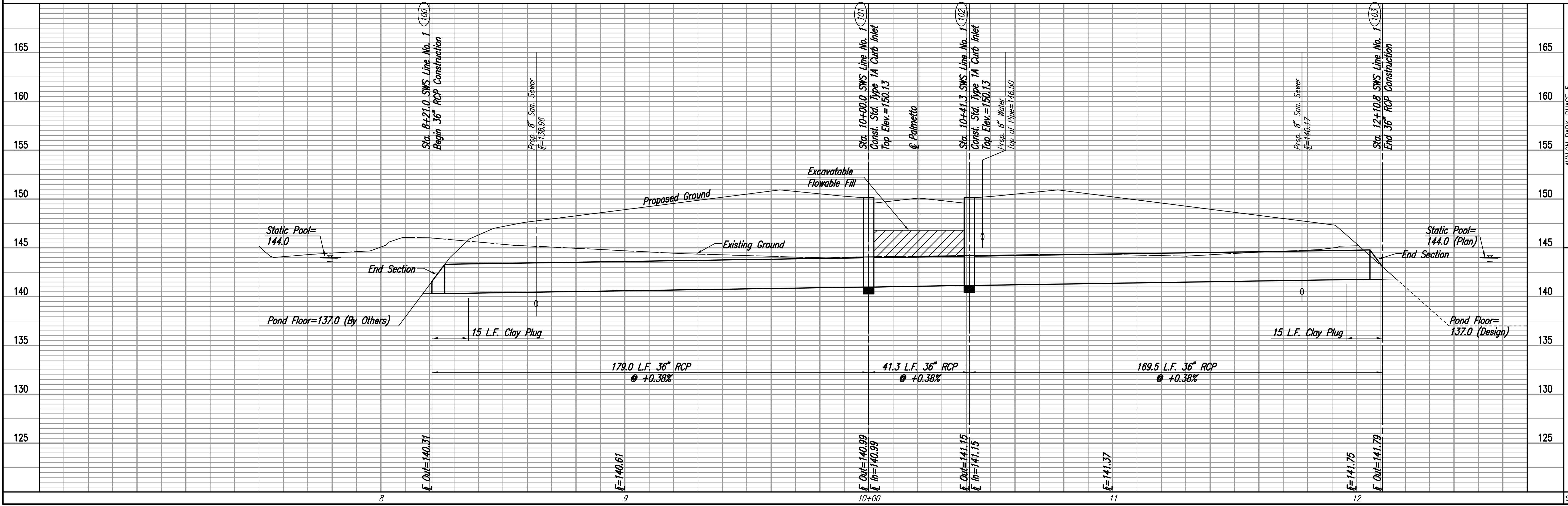
Static Pool=144.0 (Plan)

⊗ Excavate Only as Necessary for Installation of RCP and Riprap. At Contractor's option, timing of Riprap placement may be Coordinated with SWD #264 Contractor.

Install 37 L.F. Excavatable Flowable Fill to Elev. 146.75

⊗ See Title Sheet for Construction Schedule/Sequence Note.

NOTE:  
 CONTRACTOR SHALL CONSTRUCT 15 L.F. CLAY BACKFILL (PLUG) AT END OF RCP. NO GRANULAR BACKFILL SHALL BE ALLOWED IN THIS AREA. THE TOP 6" OF FILL ABOVE STATIC POOL MAY BE TOPSOIL. THIS WORK TO BE SUBSIDIARY TO 36" RCP.



SWS LINE NO. 1

AVALON PARK-PHASE 5  
 JAMES L. ARMOUR, P.E.-CITY ENGINEER  
 CITY OF WICHITA PROJECT NO. 472-83839

Professional Engineering Consultants, P.A.  
 303 S. TOPEKA, WICHITA, KANSAS 67202  
 316-262-2291 - FAX 316-262-3063

Designed By: BDB, BLB  
 Drawn By: BJS  
 Job No.: 35-05060-000  
 Date: February 2005