

Benchmarks:
 City of Wichita Benchmark located at the NE Corner of West Street and MacArthur (39th St. South) Elevation = 99.46 (City Datum)
 City of Wichita Benchmark located at West Street and I-235 (Approx. 35th St. South) on NW Corner of RQBC, Top Corral Rail. Elevation = 104.78 (City Datum)

Sta. 50+40.87, 46.00' Lt. Install 18" RCP End Section with 5.5 S.Y. Light Stone Rip Rap End Const. 18" Storm Sewer (RCP) Flow In = 96.80 Ensure a minimum of 2.0' Cover Over the Existing 14" Aquila Gas Line.

CAUTION
 14" Gas Line High Point. Contact Calvin Briggs @ Aquila Gas 9416408.

Sign to be Relocated Prior to Construction By Others.

Construct 8" Reinf. Conc. Pymt. w/7" Reinf. Crushed Stone Base

Construct 3' x 9.5' Reinf. Conc. Flume to Drain by Westar Energy Prior to Construction. Contact Miles Capps @ Westar 261-6824.

Construct 6" A.C. Pymt. (3" Bit Base) w/6" Reinf. Crushed Stone Base

Sta 53+46.51 = PT
 End A.C. Pavement
 End Curb & Gutter
 Begin A.C. Overlay
 Begin Taper

Construct Sid Comb Curb & Gutter (6 3/4")

Construct 10' x 2.5' Conc. Flume to Drain

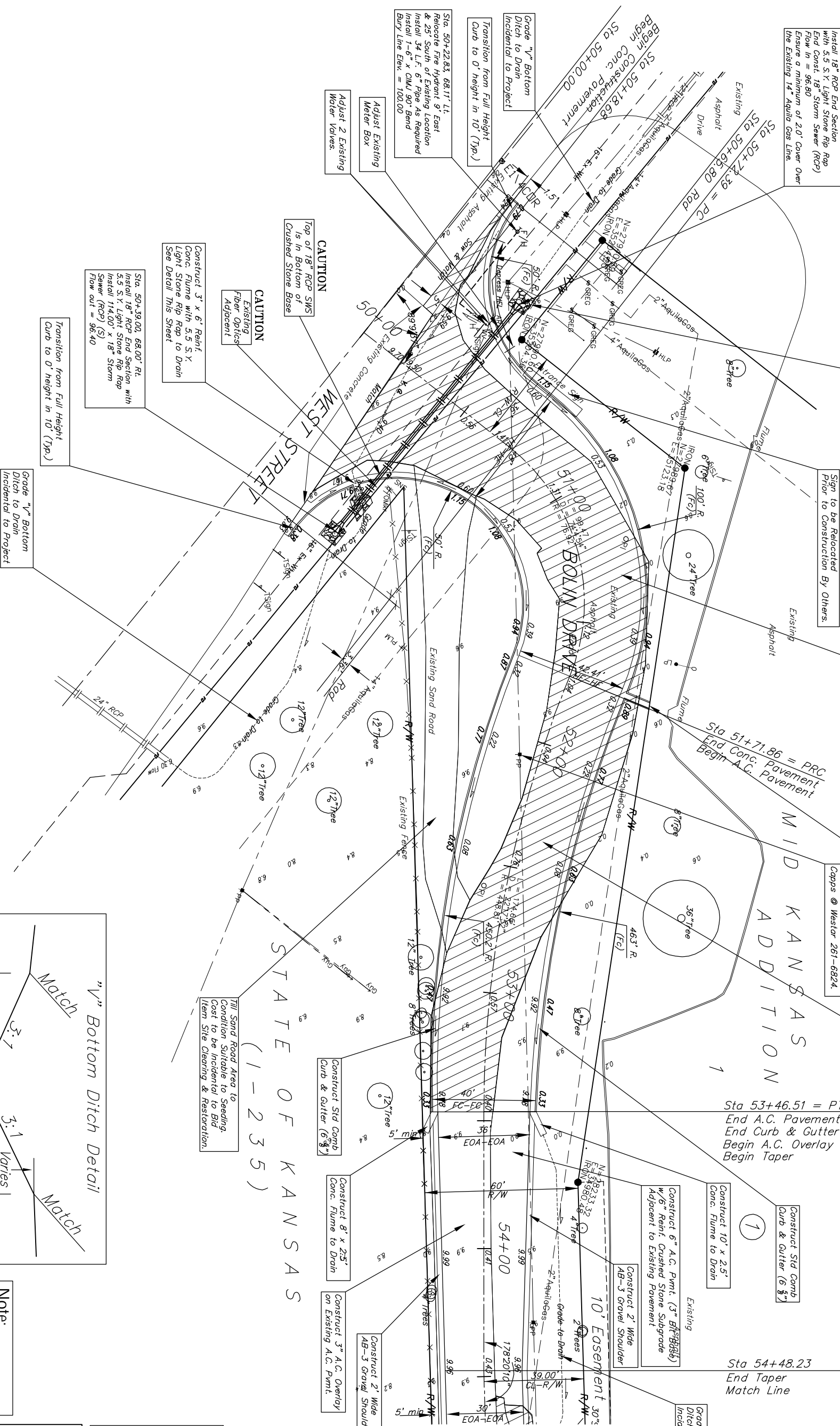
Construct 6" A.C. Pymt. (3" Bit Base) w/6" Reinf. Crushed Stone Subgrade Adjacent to Existing Pavement

Construct 2' Wide AB-3 Gravel Shoulder

Sta 54+48.23
 End Taper
 Match Line

Grade "V" Bottom Ditch to Drain Incidental to Project

Scale: 1" = 20'



CAUTION
 Existing Fiber Optics Adjacent

Construct 3' x 6' Reinf. Conc. Flume with 5.5 S.Y. Light Stone Rip Rap to Drain See Detail This Sheet

Sta. 50+39.00, 68.00' Rt. Install 18" RCP End Section with 5.5 S.Y. Light Stone Rip Rap Install 11.400' x 18" Storm Sewer (RCP) (S) Flow out = 96.40

Transition from Full Height Curb to 0' height in 10' (Typ.)

CAUTION
 Existing Sand Road

Grade "V" Bottom Ditch to Drain Incidental to Project

Adjust Existing Meter Box

Adjust 2 Existing Water Valves

Transition from Full Height Curb to 0' height in 10' (Typ.)

Grade "V" Bottom Ditch to Drain Incidental to Project

Adjust Existing Meter Box

Adjust 2 Existing Water Valves

Transition from Full Height Curb to 0' height in 10' (Typ.)

Grade "V" Bottom Ditch to Drain Incidental to Project

Adjust Existing Meter Box

Adjust 2 Existing Water Valves

Transition from Full Height Curb to 0' height in 10' (Typ.)

Grade "V" Bottom Ditch to Drain Incidental to Project

Adjust Existing Meter Box

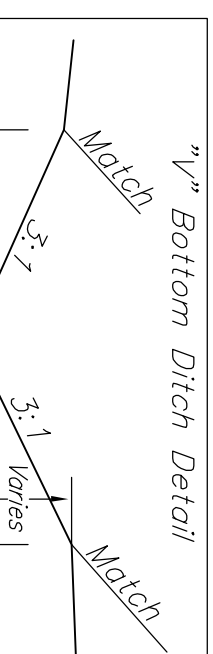
Adjust 2 Existing Water Valves

Transition from Full Height Curb to 0' height in 10' (Typ.)

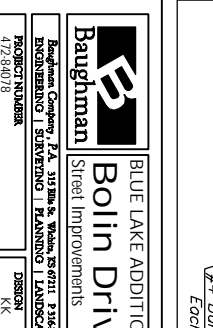
Grade "V" Bottom Ditch to Drain Incidental to Project

Adjust Existing Meter Box

Adjust 2 Existing Water Valves



Note:
 Pavement, Sidewalks, and Etc. To Be Removed Are Indicated By:



#4 Bar 9" O.C. Each Way

Baughaman
 BLUE LAKE ADDITION
 Street Improvements

Design: KK
 Drawn: TCA
 Checked: JFB
 Date: 04/06

Scale: 4 OF 18