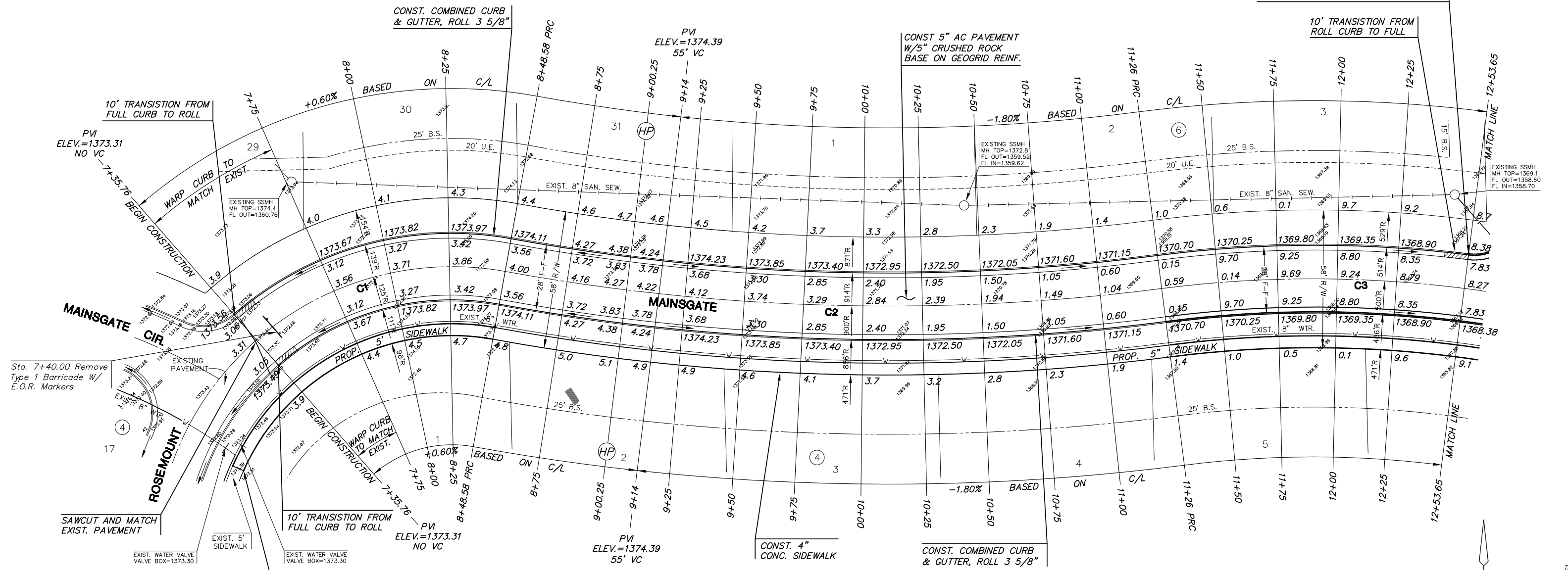


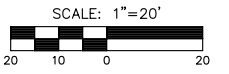
STA. 12+53.65 MAINSGATE
INSTALL SUBDIVISION BENCHMARK
(NO.8134-08, KANSAS BLUE PRINT CO.)



HAWTHORNE THIRD ADDITION

LEGEND

— + STREET SIGN & SIGN LOCATION
(SEE SIGN ASSEMBLY TABLE
FOR TYPE & STATION OF SIGN)



NOTE:
TOP OF CURB ELEVATIONS SHOWN
ARE FOR FULL CURB. CONSTRUCT
CURB AND GUTTER AS NOTED.

CURVE TABLE - C1

$\Delta = 61^{\circ}53'43"$ R = 125.00' T = 74.95' L = 135.03' LC = 128.56'

CURVE DATA BASED ON CENTERLINE $\Delta/2 = 30^{\circ}56'52"$

STATION	ARC	CHORD LENGTH		DEFLECTION	
		8'Off LtCb	8'Off RtCb	DEFLECTION	TOTAL DEFLECTION
7+13.55	-	-	-	00'00'00"	00'00'00"
7+25.00	11.45'	13.46'	9.43'	02'37'27"	02'37'27"
7+35.76	10.76'	12.65'	8.86'	02'27'58"	05'05'25"
7+50.00	14.24'	16.74'	11.73'	03'15'49"	08'21'13"
7+75.00	25.00'	29.35'	20.57'	05'43'46"	14'05'00"
8+00.00	25.00'	29.35'	20.57'	05'43'46"	19'48'46"
8+25.00	25.00'	29.35'	20.57'	05'43'46"	25'32'33"
8+48.58	23.58'	27.69'	19.40'	05'24'19"	30'56'52"

Def/Ft = 13.75099 Min.

CURVE TABLE - C2

$\Delta = 17^{\circ}39'40"$ R = 900.00' T = 139.82' L = 277.42' LC = 276.32'

CURVE DATA BASED ON CENTERLINE $\Delta/2 = 08^{\circ}49'50"$

STATION	ARC	CHORD LENGTH		DEFLECTION	
		8'Off LtCb	8'Off RtCb	DEFLECTION	TOTAL DEFLECTION
8+48.58	-	-	-	00'00'00"	00'00'00"
8+75.00	26.42'	25.77'	27.06'	00'50'28"	00'50'28"
8+99.46	24.46'	23.86'	25.06'	00'46'43"	01'37'10"
9+00.00	.54'	.53'	.55'	00'01'02"	01'38'12"
9+15.00	15.00'	14.63'	15.37'	00'28'39"	02'06'51"
9+25.00	10.00'	9.76'	10.24'	00'19'06"	02'25'57"
9+50.00	25.00'	24.39'	25.61'	00'47'45"	03'13'42"
9+75.00	25.00'	24.39'	25.61'	00'47'45"	04'01'27"
10+00.00	25.00'	24.39'	25.61'	00'47'45"	04'49'11"
10+25.00	25.00'	24.39'	25.61'	00'47'45"	05'36'56"
10+50.00	25.00'	24.39'	25.61'	00'47'45"	06'24'41"
10+75.00	25.00'	24.39'	25.61'	00'47'45"	07'12'26"
11+00.00	25.00'	24.39'	25.61'	00'47'45"	08'00'11"
11+25.00	25.00'	24.39'	25.61'	00'47'45"	08'47'55"
11+26.00	1.00'	.98'	1.02'	00'01'55"	08'49'50"

Def/Ft = 1.90986 Min.

CURVE TABLE - C3

$\Delta = 18^{\circ}53'15"$ R = 500.00' T = 83.17' L = 164.82' LC = 164.08'

CURVE DATA BASED ON CENTERLINE $\Delta/2 = 09^{\circ}26'37"$

STATION	ARC	CHORD LENGTH		DEFLECTION	
		8'Off LtCb	8'Off RtCb	DEFLECTION	TOTAL DEFLECTION
11+26.00	-	-	-	00'00'00"	00'00'00"
11+50.00	24.00'	25.05'	22.94'	01'22'30"	01'22'30"
11+75.00	25.00'	26.10'	23.90'	01'25'57"	02'48'27"
12+00.00	25.00'	26.10'	23.90'	01'25'57"	04'14'24"
12+25.00	25.00'	26.10'	23.90'	01'25'57"	05'40'20"
12+50.00	25.00'	26.10'	23.90'	01'25'57"	07'06'17"
12+75.00	25.00'	26.10'	23.90'	01'25'57"	08'32'13"
12+90.82	15.82'	16.52'	15.13'	00'54'24"	09'26'37"

Def/Ft = 3.43775 Min.

MKEC ENGINEERING CONSULTANTS
411 N. WEBB ROAD
WICHITA, KS. 67206
316-684-9600

HAWTHORNE 3RD ADDITION - PHASE 2
PROJECT NAME

PAVING PLANS
SHEET TITLE

DESIGN BY: MKEC
DRAWN BY: GJA
CHECKED BY: GJA

DATE: OCTOBER 2005
JOB NO.: 02167
SHEET/OF: 8 / 28