

HAWTHORNE THIRD ADDITION

AN ADDITION TO WICHITA, SEDGWICK COUNTY, KANSAS

BENCH MARKS

BM #31 "T" post 41" +/-, SE. of SE. Cor. Williamsgate and Easton on Hwy 277 +/- S. of line
Elev.=1364.243NGVD
176.84 City datum

BM #32 "T" post 5' +/-, N. & 5' +/- W. of NW. Cor. Rosemont and Camden Chase - in Res. "C"
Elev.=1368.63 NGVD
181.33 City datum

NE. Cor., SW. 1/4, Sec. 2,
T27S, R2E, 6th P.M.
Fnd. 3/4" Bar w/ T.I.S.
Bross Id. cap in Conc.

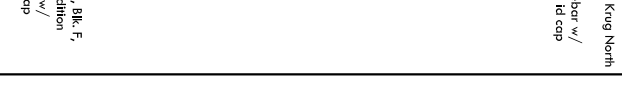
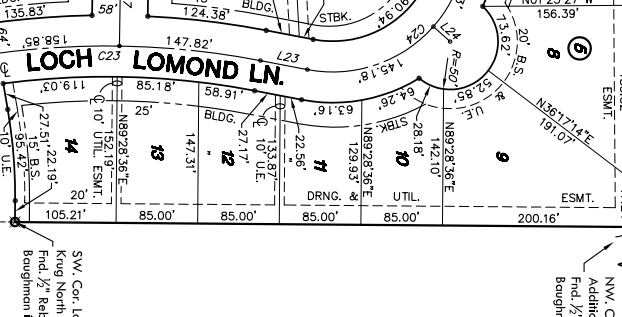
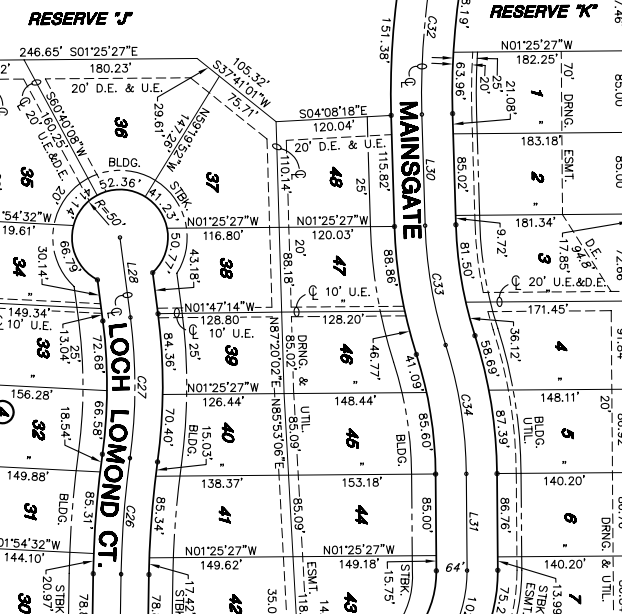
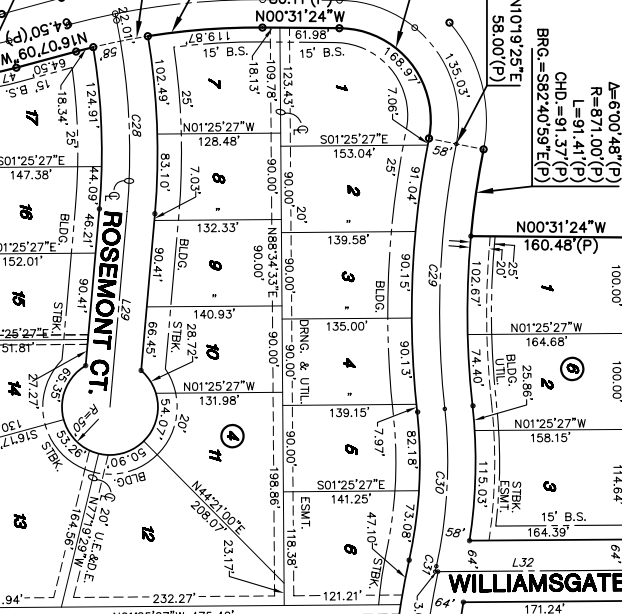
NE. Cor., SE. 1/4, Sec. 2,
T27S, R2E, 6th P.M.
Fnd. 3/4" Rebar w/ cap in Thimble

A=15'35.45"(P)
R=721.00"(P)
L=196.25"(P)
CHD=195.65"(P)
BRG=S081916.16(E/P)

A=100'50.49"(P)
R=96.00"(P)
L=168.97"(P)
CHD=147.99"(P)
BRG=S49534.01(W/P)

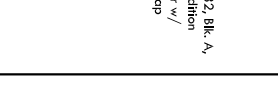
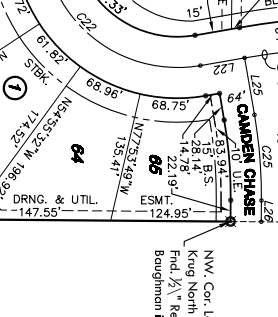
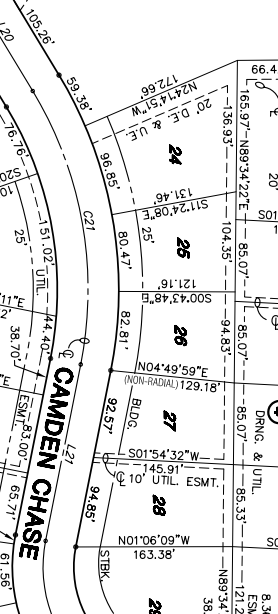
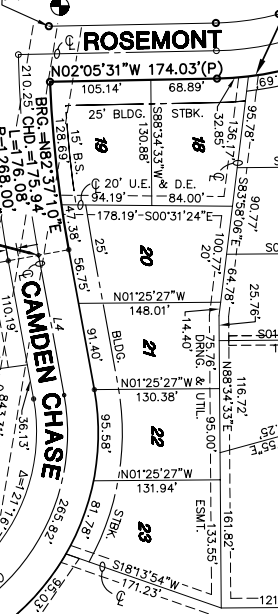
A=6'00.48"(P)
R=871.41"(P)
L=91.37"(P)
CHD=82.40599(E/P)
BRG=S8240599(E/P)

A=6'00.48"(P)
R=871.41"(P)
L=91.37"(P)
CHD=82.40599(E/P)
BRG=S8240599(E/P)

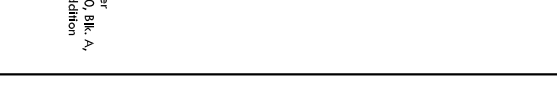
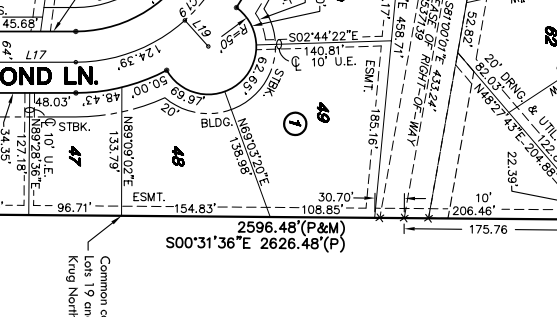
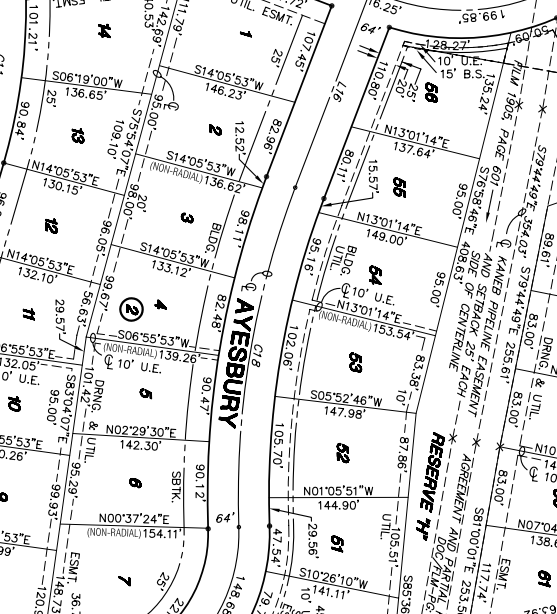
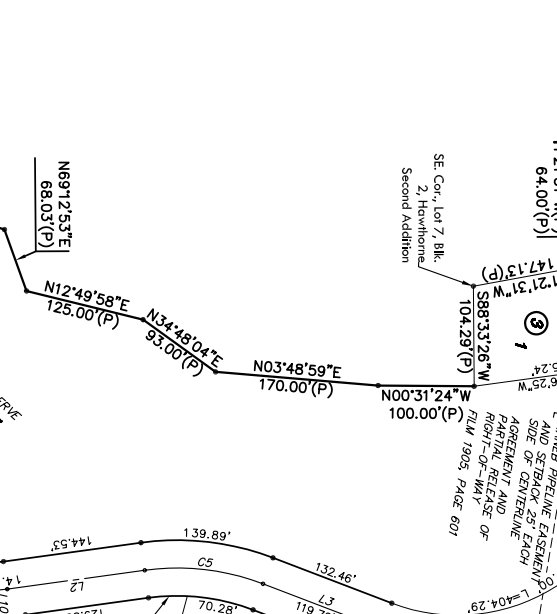


LEGEND

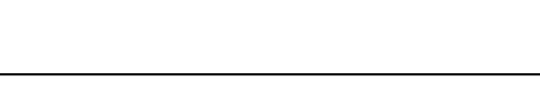
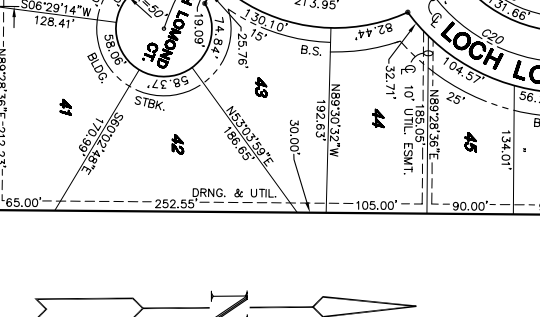
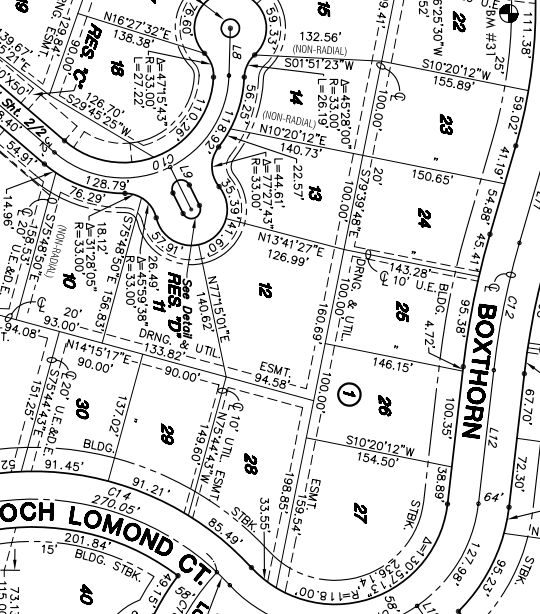
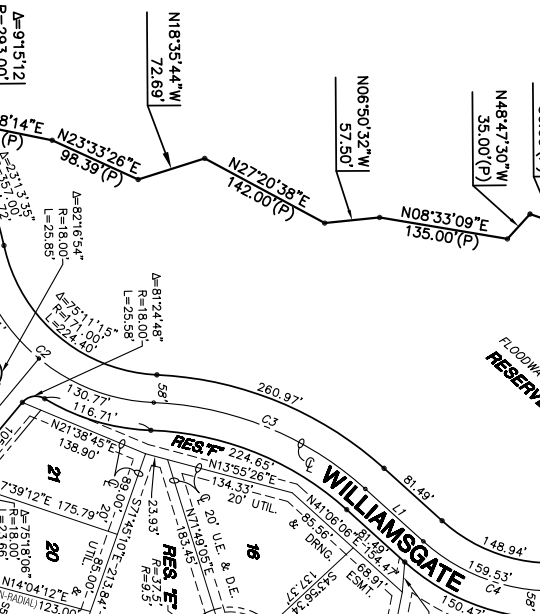
△ = Section Corner Measurement Found
□ = Found Survey Measurement (see annotated caption for type)
○ = Found 5/8" Rebar w/ AMEC CIS 39 Id. Cap
● = Sm 5/8" Rebar w/ AMEC CIS 39 Id. Cap
X = Node
U.E. = Utility Easement
D.E. = Driveway Easement
(D) = Deeded
(P) = Platred
(M) = Measured



CURVE	LENGTH	RADIUS	DELTA
C1	131.92	325.00	230.9972
C2	243.28	200.00	75.25300
C3	242.97	350.00	39.46300
C4	174.20	200.00	28.44377
C5	125.33	250.00	28.44377
C6	465.67	220.00	121.6336
C7	158.77	100.00	90.58704
C8	226.30	72.42	179.0136
C9	247.71	110.00	179.0136
C10	190.64	350.00	10.5133
C11	33.87	80.00	130.4143
C12	289.14	280.00	59.9977
C13	195.79	280.00	40.0332
C14	110.00	200.00	24.1426
C15	122.91	500.00	14.0505
C16	340.87	170.00	22.5875
C17	122.91	170.00	92.0156
C18	169.41	175.00	55.2750
C19	295.84	400.00	42.2936
C20	271.33	140.00	111.0318
C21	306.67	850.00	20.4018
C22	89.48	500.00	101.6434
C23	121.31	1000.00	6.5701
C24	89.48	500.00	101.6434
C25	177.88	700.00	15.1833
C26	277.42	900.00	17.3974
C27	164.82	500.00	18.5315
C28	5.80	771.00	0.24515
C29	185.43	768.00	13.5001
C30	126.62	450.00	16.0719
C31	136.92	450.00	17.2136



LINE	LENGTH	BEARING
L1	81.49	S41°00'00"E
L2	144.59	S08°48'11"E
L3	135.97	S19°55'31"W
L4	148.14	N78°38'55"E
L5	181.57	S51°13'24"W
L6	45.58	N50°14'30"W
L7	36.53	S89°15'57"E
L8	49.32	S02°40'33"W
L9	17.60	N83°44'26"E
L10	35.00	S74°44'26"E
L11	96.07	N83°44'26"E
L12	140.00	S84°26'10"E
L13	110.67	S82°04'13"E
L14	37.44	N87°54'41"E
L15	37.61	N89°50'42"W
L16	219.41	N01°04'29"W
L17	82.38	N01°00'55"W
L18	32.52	S54°03'58"E
L19	135.22	S57°57'55"W
L20	182.42	S79°44'49"E
L21	46.78	S10°44'57"E
L22	46.73	S09°52'22"W
L23	33.56	S40°59'10"W
L24	62.14	S97°12'03"W
L25	62.14	S97°12'03"W
L26	22.19	S89°58'42"W
L27	110.33	S89°58'42"W
L28	83.91	N81°32'40"E
L29	204.62	N85°30'53"E
L30	110.32	N88°34'39"E
L31	110.32	N88°34'39"E
L32	200.41	N01°23'36"W



A=50'26.34"(P)
R=110.50"(P)
L=97.28"(P)
CHD=94.17"(P)
BRG=N190811.1(E/P)

A=53'40.38"(P)
R=114.50"(P)
L=107.27"(P)
CHD=103.39"(P)
BRG=N20451.4(E/P)

A=48'06.57"(P)
R=91.50"(P)
L=76.84"(P)
CHD=74.60"(P)
BRG=N23320.4(E/P)

N00'31'24"W
10.38"(P)

