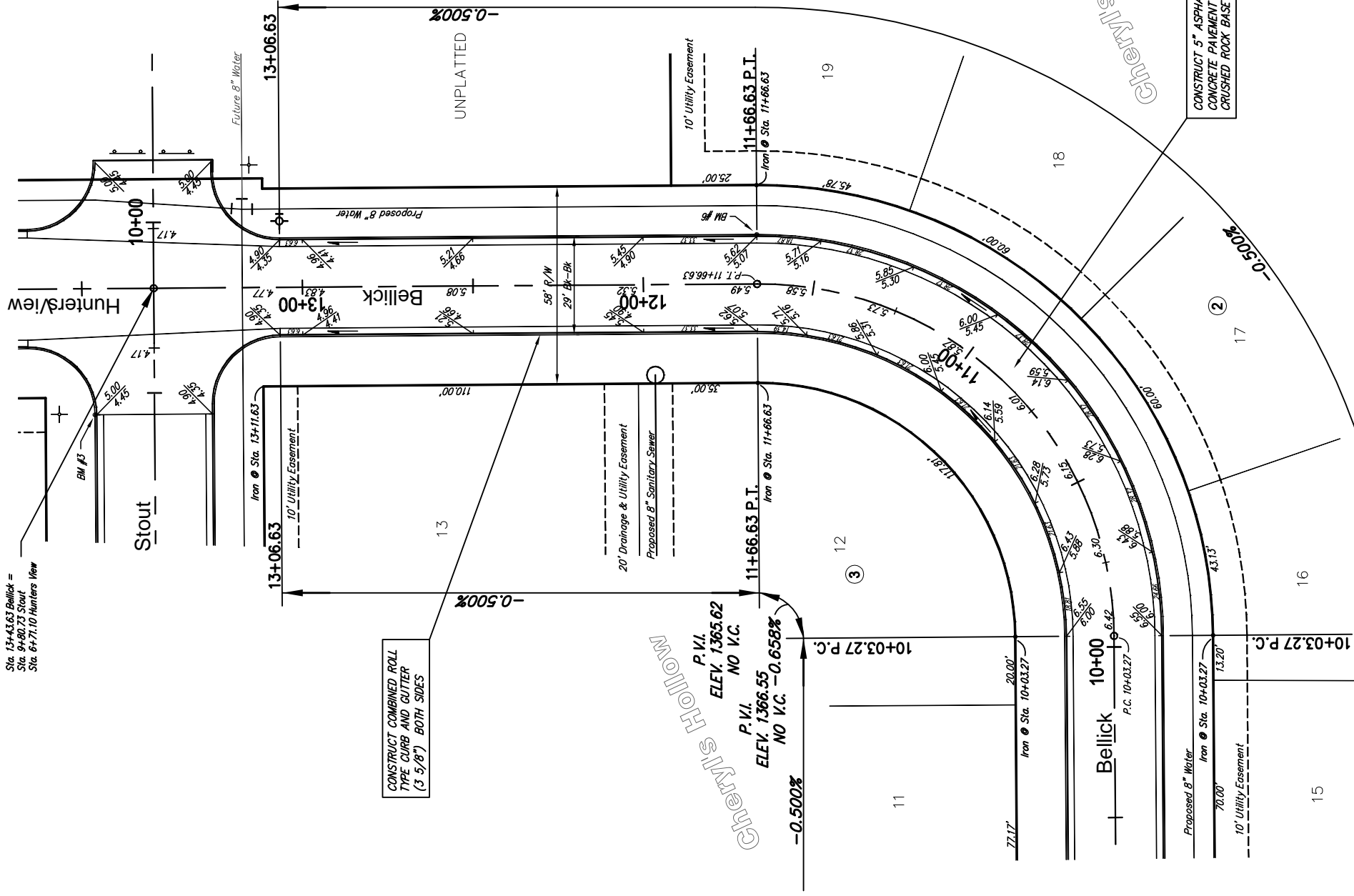


Sta. 13+43.63 Bellick =
Sta. 9+40.23 Stout
Sta. 6+71.10 Hunters View





CONSTRUCT COMBINED ROLL
TYPE CURB AND GUTTER
(3'-5/8") BOTH SIDES

CONSTRUCT 5" ASPHALT
CONCRETE PAVEMENT W/ 5"
CRUSHED ROCK BASE

| No. | Street and Station | From CL | Description | Elevation |
|-----|------------------------|-----------|--|-----------|
| 6 | Bellick, Sta. 11+66.63 | 14.5' Rt. | P.T. of Curve on Bellick East carbline | |


Subdivision Bench Marks


 SCALE 1" = 20'
 IRON = ●



NOTE: ROLL TYPE CURB AND
 GUTTER TO BE CONSTRUCTED ALONG
 PAVEMENT DEPICTED ON THIS SHEET

Cheryl's Hollow Addition, Paving Improvements
Bellick
 WICHITA, KANSAS


Ruggles & Bohm, F.A.
 Engineers, Surveying, Land Planning
 924 North Main
 Wichita, Kansas 67203
 (316) 264-8008
 (316) 264-4621 fax
 www.rbkansas.com
 E-mail: info@rbkansas.com

| | | | |
|--------------------|----------------|--------------|----------|
| DRAWING FILE | PROJECT NUMBER | DATE | SHEET |
| paving (Bellick 3) | | Aug. 2, 2005 | 10 OF 43 |