

CHERYL'S HOLLOW ADD.

STA. 17+50.83, 23' LT.
INSTALL 60 L.F. 18" ROP
LENGTH INCL. END SECTIONS.
FL E = 1361.72
FL W = 1362.0
PLACE 11 S.X. LIGHT STONE
BHPRAP AS INDICATED.

REGRADE 100 L.F.
DITCH AS INDICATED

REGRADE 585 L.F.
DITCH AS INDICATED

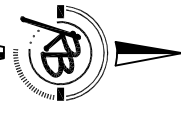
CONSTRUCTION TRAFFIC CONTROL
TO BE INSTALLED AND MAINTAINED
IN ACCORDANCE WITH DETAILS ON
SHEETS 28-29.

COPPER GATE ADD.

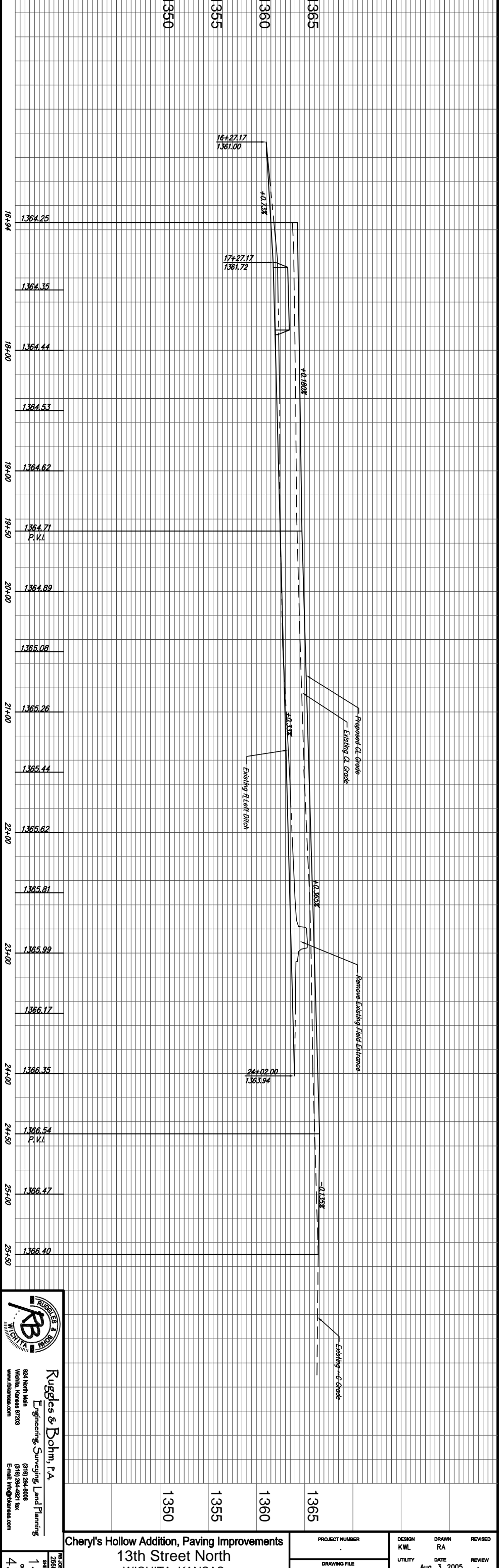
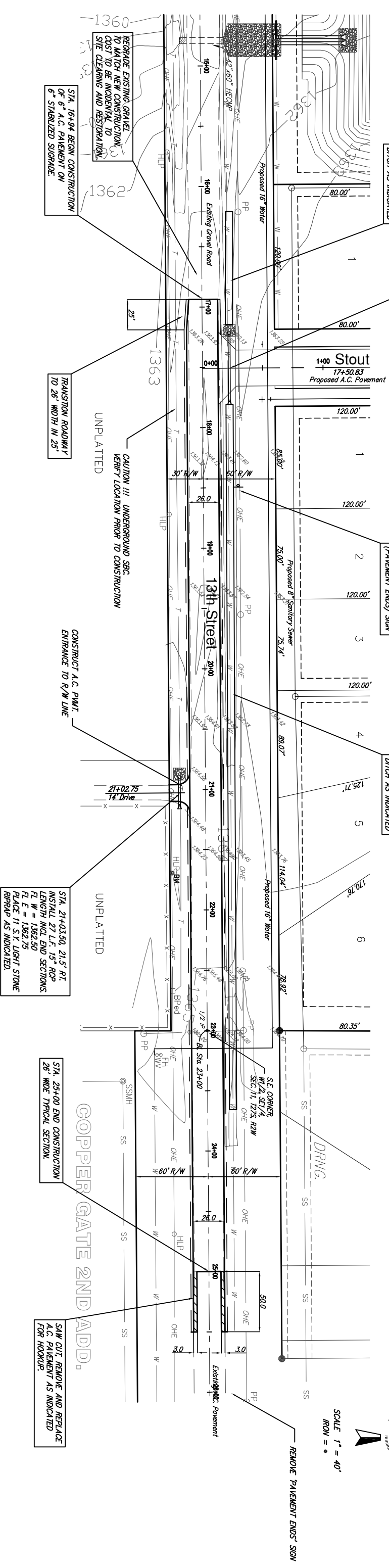
STA. 19+50, 28' LT.
INSTALL WB-3
(PAVEMENT ENDS) SIGN

REGRADE 585 L.F.
DITCH AS INDICATED

COPPER GATE ADD.



SCALE 1" = 40'
IRON = •



RUGGLES & BOHM, INC.
WICHITA, KANSAS

Ruggles & Bohm, P.A.
Engineering, Surveying, Land Planning
604 North Main
Wichita, Kansas 67203
www.rbgma.com
(316) 264-8008
(316) 264-8027 fax
Email: info@rbgma.com

Cheryl's Hollow Addition, Paving Improvements
13th Street North
WICHITA, KANSAS

PROJECT NUMBER	DESIGN KWL	DRAWN RA	REVISED
DRAWING FILE	UTILITY	DATE	REVIEW
paving 13th Street		Aug. 3, 2005	

JOB NO. 2066E
SHEET 14
OF 43