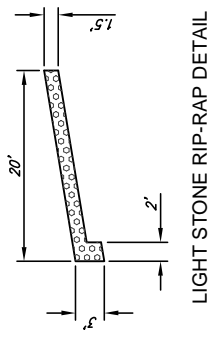
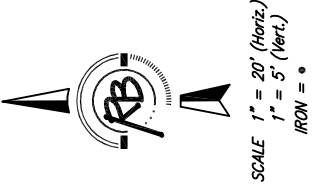
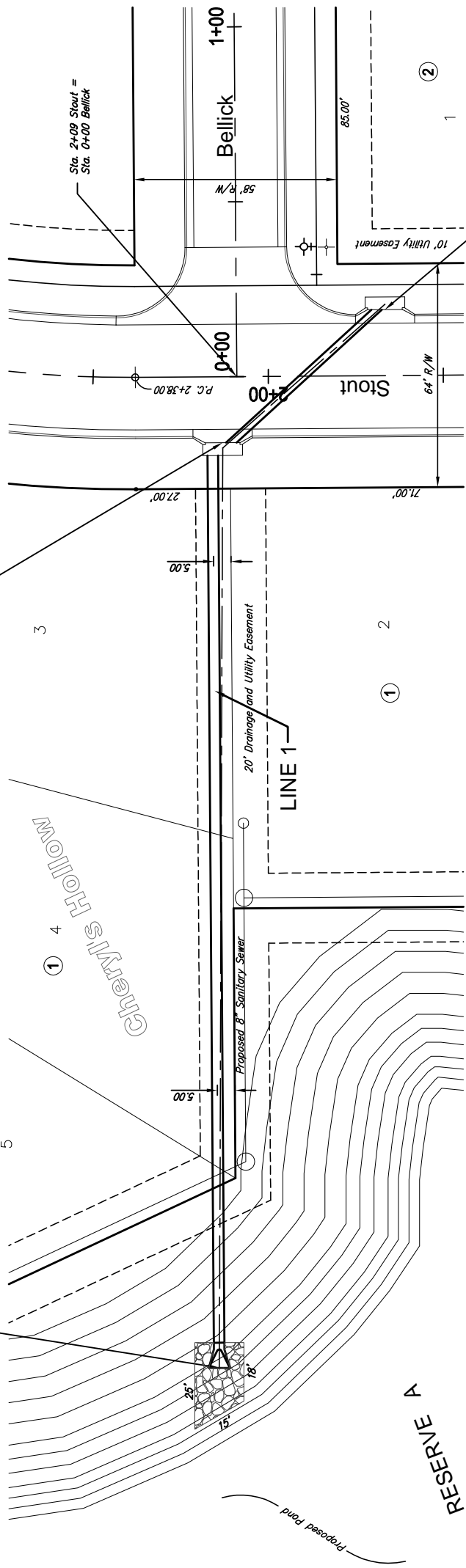


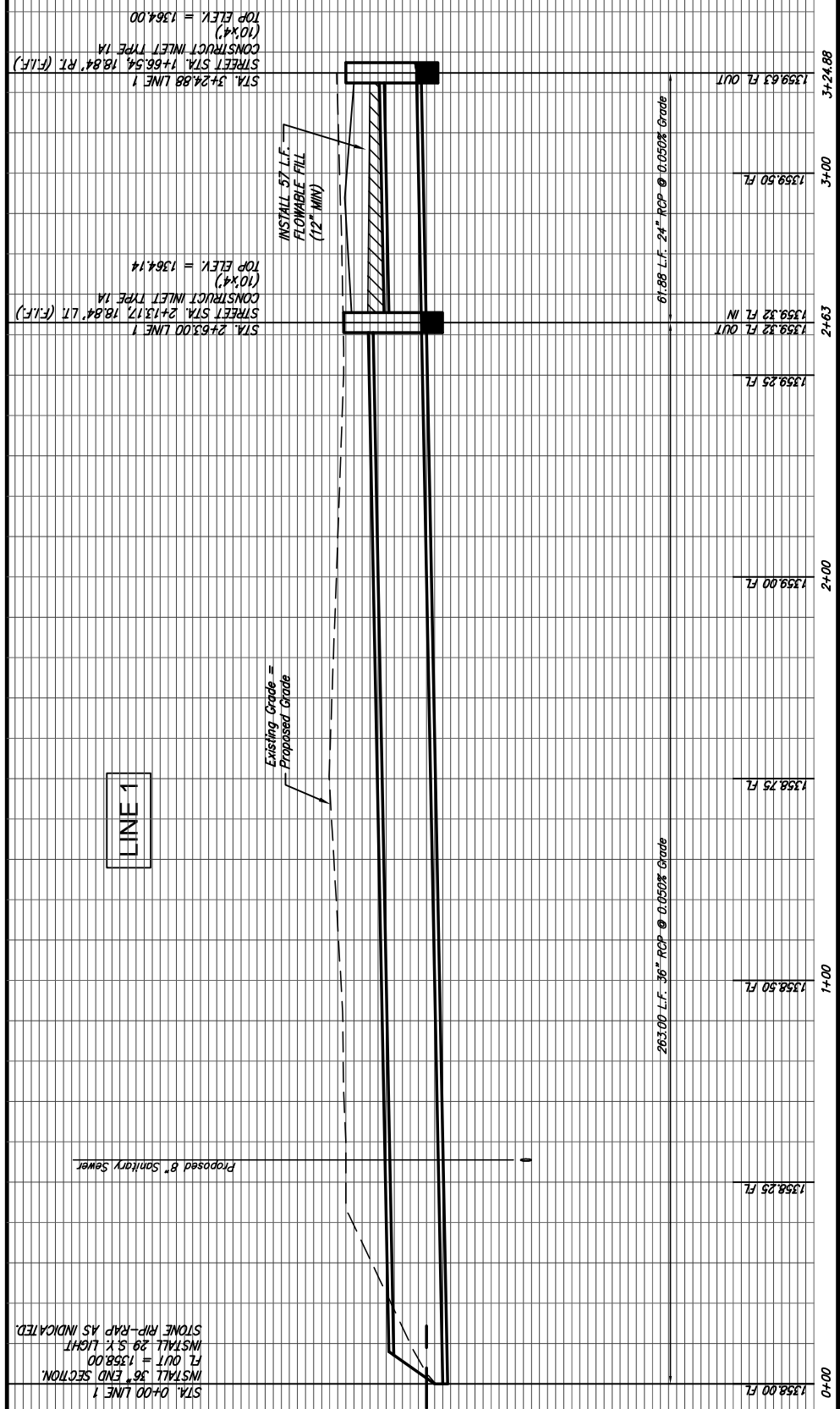
STA. 0+00 LINE 1
 INSTALL 36" END SECTION.
 FL OUT = 1358.00
 INSTALL 29 S.Y. LIGHT
 STONE RIP-RAP AS INDICATED.

STA. 2+63.00 LINE 1
 STREET STA. 2+13.17, 18.84' LT. (F.I.F.)
 CONSTRUCT INLET TYPE 1A
 (10'x4')
 TOP ELEV. = 1364.14

STA. 3+24.88 LINE 1
 STREET STA. 1+66.54, 18.84' RT. (F.I.F.)
 CONSTRUCT INLET TYPE 1A
 (10'x4')
 TOP ELEV. = 1364.00



STA. 0+00 LINE 1
 INSTALL 36" END SECTION.
 FL OUT = 1358.00
 INSTALL 29 S.Y. LIGHT
 STONE RIP-RAP AS INDICATED.



PROJECT NUMBER	472-84139
DESIGN	KWL
DRAWN	RA
REVIEWED	
DATE	Aug 2, 2005
REVISION	

PROJECT NUMBER	472-84139
DESIGN	KWL
DRAWN	RA
REVIEWED	
DATE	Aug 2, 2005
REVISION	

PROJECT NUMBER	472-84139
DESIGN	KWL
DRAWN	RA
REVIEWED	
DATE	Aug 2, 2005
REVISION	

PROJECT NUMBER	472-84139
DESIGN	KWL
DRAWN	RA
REVIEWED	
DATE	Aug 2, 2005
REVISION	

PROJECT NUMBER	472-84139
DESIGN	KWL
DRAWN	RA
REVIEWED	
DATE	Aug 2, 2005
REVISION	

PROJECT NUMBER	472-84139
DESIGN	KWL
DRAWN	RA
REVIEWED	
DATE	Aug 2, 2005
REVISION	

PROJECT NUMBER	472-84139
DESIGN	KWL
DRAWN	RA
REVIEWED	
DATE	Aug 2, 2005
REVISION	

PROJECT NUMBER	472-84139
DESIGN	KWL
DRAWN	RA
REVIEWED	
DATE	Aug 2, 2005
REVISION	

Ruggles & Bohm, P.A.
 Engineering, Surveying, Land Planning
 824 North Main
 Wichita, Kansas 67203
 www.rbanias.com
 (316) 264-8008
 (316) 264-4821 fax
 E-mail: info@rbanias.com

PROJECT 2068E
 SHEET 15 OF 43