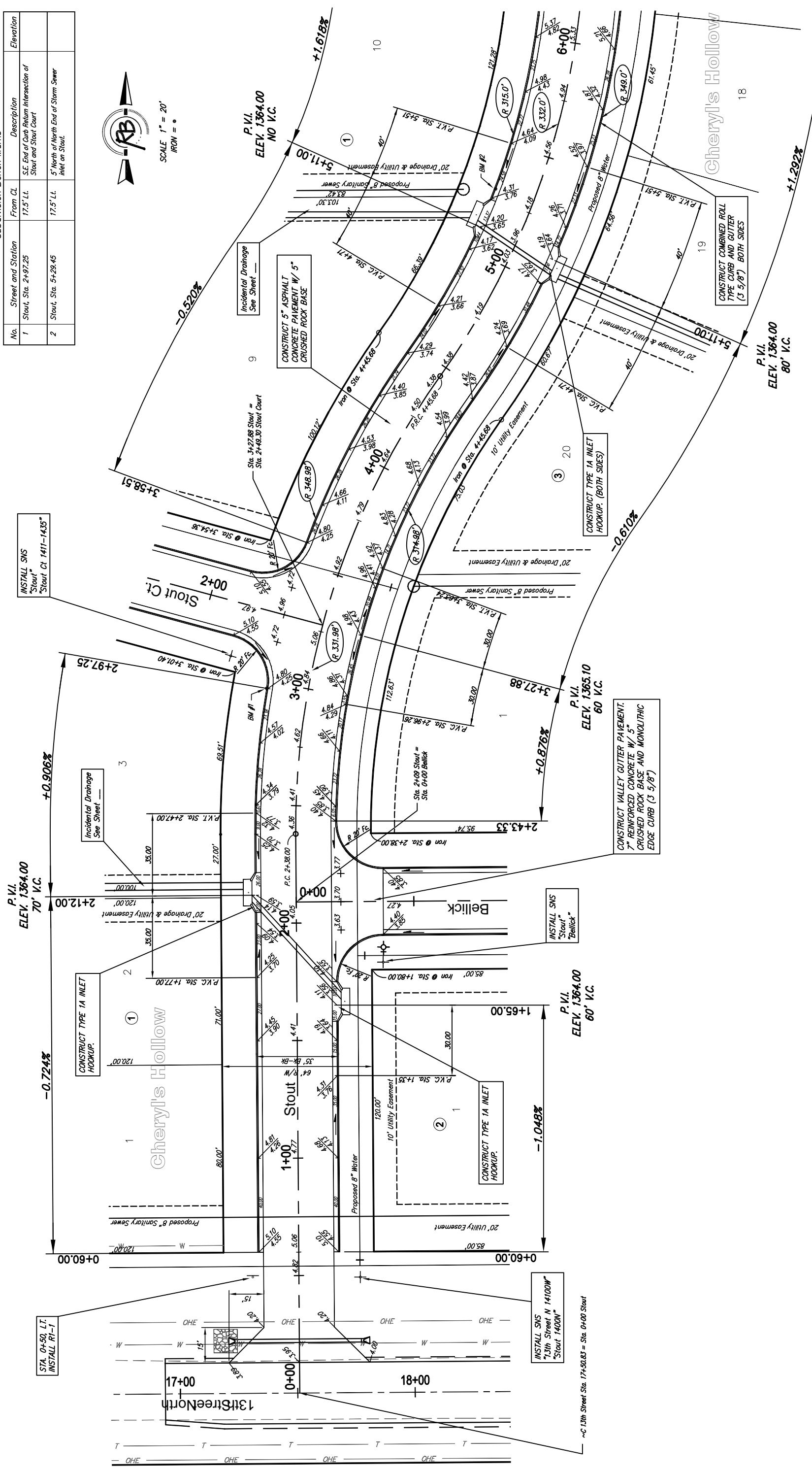


Subdivision Bench Marks

No.	Street and Station	From CL	Description	Elevation
1	Stout Sta. 2+97.25	17.5' Lt.	S.E. End of Curb Return Intersection of Stout and Stout Court	
2	Stout Sta. 5+28.45	17.5' Lt.	5' North of North End of Storm Sewer Inlet on Stout.	



Cheryll's Hollow Addition, Paving Improvements
Stout
WICHITA, KANSAS



Ruggles & Bohm, Inc.
Engineering, Surveying, Land Planning
924 North Main
Wichita, Kansas 67203
(316) 264-8008
(316) 264-4621 fax
www.rbkansas.com
E-mail: info@rbkansas.com

DESIGN: KWL
DRAWN: RA
REVIEW: UTILITY
DATE: Aug. 2, 2005
SHEET: 6 OF 43
PROJECT NUMBER: paving {stout 1}

NOTE: ROLL TYPE CURB AND GUTTER TO BE CONSTRUCTED ALONG PAVEMENT DEPICTED ON THIS SHEET

STA. 0+50, L.T.
INSTALL RT-1

INSTALL SNS
"13th Street N 14100W"
"Stout 1400W"

~C 13th Street Sta. 17+50.83 = Sta. 0+00 Stout

0+60.00

0+60.00

17+00

18+00

13th Street North

0+00

1+00 Stout

1+65.00

P.V.I. 1364.00
60' V.C.

3+27.88

P.V.I. 1365.10
60' V.C.

5+11.00

P.V.I. 1364.00
80' V.C.

6+00

P.V.I. 1364.00
NO V.C.

Cheryll's Hollow

18

+1.292%

+1.618%

-0.192%

+0.876%

-1.048%

-0.724%

+0.906%

-0.520%

CONSTRUCT TYPE 1A INLET
HOOKUP.

CONSTRUCT TYPE 1A INLET
HOOKUP.

CONSTRUCT TYPE 1A INLET
HOOKUP.

CONSTRUCT VALLEY GUTTER PAVEMENT.
7" REINFORCED CONCRETE W/ 5"
CRUSHED ROCK BASE AND MONOLITHIC
EDGE CURB (3 5/8")

CONSTRUCT 5" ASPHALT
CONCRETE PAVEMENT W/ 5"
CRUSHED ROCK BASE

CONSTRUCT COMBINED ROLL
TYPE CURB AND GUTTER
(3 5/8") BOTH SIDES

CONSTRUCT TYPE 1A INLET
HOOKUP. (BOTH SIDES)

INCIDENTAL DRAINAGE
SEE SHEET

INCIDENTAL DRAINAGE
SEE SHEET

INCIDENTAL DRAINAGE
SEE SHEET

INSTALL SNS
"Stout"
Stout Ct 1411-1435"

INSTALL SNS
"Stout"
"Bellick"

INSTALL SNS
"13th Street N 14100W"
"Stout 1400W"

20' Drainage & Utility Easement

20' Drainage & Utility Easement

20' Drainage & Utility Easement

20' Drainage & Utility Easement

20' Drainage & Utility Easement

20' Drainage & Utility Easement

20' Drainage & Utility Easement

Proposed 8" Water

Proposed 8" Water

Proposed 8" Water

Proposed 8" Water

Proposed 8" Sanitary Sewer

Proposed 8" Water

Proposed 8" Water

10' Utility Easement

10' Utility Easement

10' Utility Easement

10' Utility Easement

10' Utility Easement

10' Utility Easement

10' Utility Easement

Iron @ Sta. 2+38.00

Iron @ Sta. 1+80.00

Iron @ Sta. 2+38.00

Iron @ Sta. 1+80.00

Iron @ Sta. 4+45.88

Iron @ Sta. 4+45.88

Iron @ Sta. 4+45.88

Iron @ Sta. 3+54.36

Iron @ Sta. 3+01.40

Iron @ Sta. 2+96.26

Iron @ Sta. 2+38.00

Iron @ Sta. 4+45.88

Iron @ Sta. 4+45.88

Iron @ Sta. 4+45.88

Iron @ Sta. 3+54.36

Iron @ Sta. 3+01.40

Iron @ Sta. 2+96.26

Iron @ Sta. 2+38.00

Iron @ Sta. 4+45.88

Iron @ Sta. 4+45.88

Iron @ Sta. 4+45.88

Iron @ Sta. 3+54.36

Iron @ Sta. 3+01.40

Iron @ Sta. 2+96.26

Iron @ Sta. 2+38.00

Iron @ Sta. 4+45.88

Iron @ Sta. 4+45.88

Iron @ Sta. 4+45.88

Iron @ Sta. 3+54.36

Iron @ Sta. 3+01.40

Iron @ Sta. 2+96.26

Iron @ Sta. 2+38.00

Iron @ Sta. 4+45.88

Iron @ Sta. 4+45.88

Iron @ Sta. 4+45.88

Iron @ Sta. 3+54.36

Iron @ Sta. 3+01.40

Iron @ Sta. 2+96.26

Iron @ Sta. 2+38.00

Iron @ Sta. 4+45.88

Iron @ Sta. 4+45.88

Iron @ Sta. 4+45.88

Iron @ Sta. 3+54.36

Iron @ Sta. 3+01.40

Iron @ Sta. 2+96.26

Iron @ Sta. 2+38.00

Iron @ Sta. 4+45.88

Iron @ Sta. 4+45.88

Iron @ Sta. 4+45.88

Iron @ Sta. 3+54.36

Iron @ Sta. 3+01.40

Iron @ Sta. 2+96.26

Iron @ Sta. 2+38.00

Iron @ Sta. 4+45.88

Iron @ Sta. 4+45.88

Iron @ Sta. 4+45.88

Iron @ Sta. 3+54.36

Iron @ Sta. 3+01.40

Iron @ Sta. 2+96.26

Iron @ Sta. 2+38.00

Iron @ Sta. 4+45.88

Iron @ Sta. 4+45.88

Iron @ Sta. 4+45.88

Iron @ Sta. 3+54.36

Iron @ Sta. 3+01.40

Iron @ Sta. 2+96.26

Iron @ Sta. 2+38.00

Iron @ Sta. 4+45.88

Iron @ Sta. 4+45.88

Iron @ Sta. 4+45.88

Iron @ Sta. 3+54.36

Iron @ Sta. 3+01.40

Iron @ Sta. 2+96.26

Iron @ Sta. 2+38.00

Iron @ Sta. 4+45.88

Iron @ Sta. 4+45.88

Iron @ Sta. 4+45.88

Iron @ Sta. 3+54.36

Iron @ Sta. 3+01.40

Iron @ Sta. 2+96.26

Iron @ Sta. 2+38.00

Iron @ Sta. 4+45.88

Iron @ Sta. 4+45.88

Iron @ Sta. 4+45.88

Iron @ Sta. 3+54.36

Iron @ Sta. 3+01.40

Iron @ Sta. 2+96.26

Iron @ Sta. 2+38.00

Iron @ Sta. 4+45.88

Iron @ Sta. 4+45.88

Iron @ Sta. 4+45.88

Iron @ Sta. 3+54.36

Iron @ Sta. 3+01.40

Iron @ Sta. 2+96.26

Iron @ Sta. 2+38.00

Iron @ Sta. 4+45.88

Iron @ Sta. 4+45.88

Iron @ Sta. 4+45.88

Iron @ Sta. 3+54.36

Iron @ Sta. 3+01.40

Iron @ Sta. 2+96.26

Iron @ Sta. 2+38.00

Iron @ Sta. 4+45.88

Iron @ Sta. 4+45.88

Iron @ Sta. 4+45.88

Iron @ Sta. 3+54.36

Iron @ Sta. 3+01.40

Iron @ Sta. 2+96.26

Iron @ Sta. 2+38.00

Iron @ Sta. 4+45.88

Iron @ Sta. 4+45.88

Iron @ Sta. 4+45.88

Iron @ Sta. 3+54.36

Iron @ Sta. 3+01.40

Iron @ Sta. 2+96.26

Iron @ Sta. 2+38.00

Iron @ Sta. 4+45.88

Iron @ Sta. 4+45.88

Iron @ Sta. 4+45.88

Iron @ Sta. 3+54.36

Iron @ Sta. 3+01.40

Iron @ Sta. 2+96.26

Iron @ Sta. 2+38.00

Iron @ Sta. 4+45.88

Iron @ Sta. 4+45.88

Iron @ Sta. 4+45.88

Iron @ Sta. 3+54.36

Iron @ Sta. 3+01.40

Iron @ Sta. 2+96.26

Iron @ Sta. 2+38.00

Iron @ Sta. 4+45.88

Iron @ Sta. 4+45.88

Iron @ Sta. 4+45.88

Iron @ Sta. 3+54.36

Iron @ Sta. 3+01.40

Iron @ Sta. 2+96.26

Iron @ Sta. 2+38.00

Iron @ Sta. 4+45.88

Iron @ Sta. 4+45.88

Iron @ Sta. 4+45.88

Iron @ Sta. 3+54.36

Iron @ Sta. 3+01.40

Iron @ Sta. 2+96.26

Iron @ Sta. 2+38.00

Iron @ Sta. 4+45.88

Iron @ Sta. 4+45.88

Iron @ Sta. 4+45.88

Iron @ Sta. 3+54.36

Iron @ Sta. 3+01.40

Iron @ Sta. 2+96.26

Iron @ Sta. 2+38.00

Iron @ Sta. 4+45.88

Iron @ Sta. 4+45.88

Iron @ Sta. 4+45.88

Iron @ Sta. 3+54.36

Iron @ Sta. 3+01.40

Iron @ Sta. 2+96.26

Iron @ Sta. 2+38.00

Iron @ Sta. 4+45.88

Iron @ Sta. 4+45.88

Iron @ Sta. 4+45.88

Iron @ Sta. 3+54.36

Iron @ Sta. 3+01.40

Iron @ Sta. 2+96.26

Iron @ Sta. 2+38.00

Iron @ Sta. 4+45.88

Iron @ Sta. 4+45.88

Iron @ Sta. 4+45.88

Iron @ Sta. 3+54.36

Iron @ Sta. 3+01.40

Iron @ Sta. 2+96.26

Iron @ Sta. 2+38.00

Iron @ Sta. 4+45.88

Iron @ Sta.