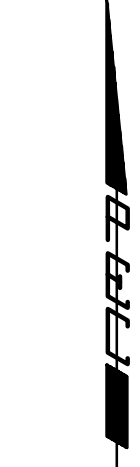
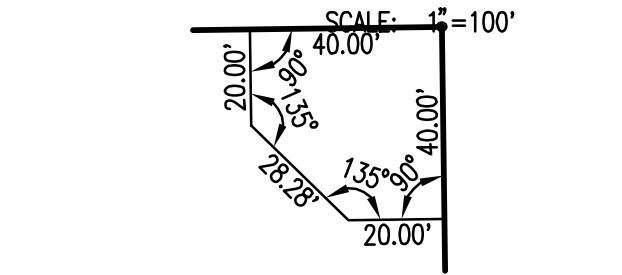
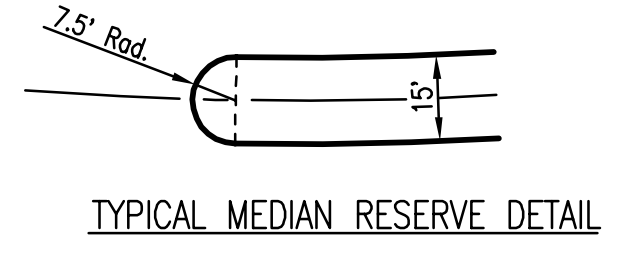


# OAK CREEK

## AN ADDITION TO WICHITA, SEDGWICK COUNTY, KANSAS



SCALE: 1" = 100'  
 • = 1/2" REBAR W/PEC CAP UNLESS OTHERWISE NOTED  
 ○ = NO MONUMENT SET



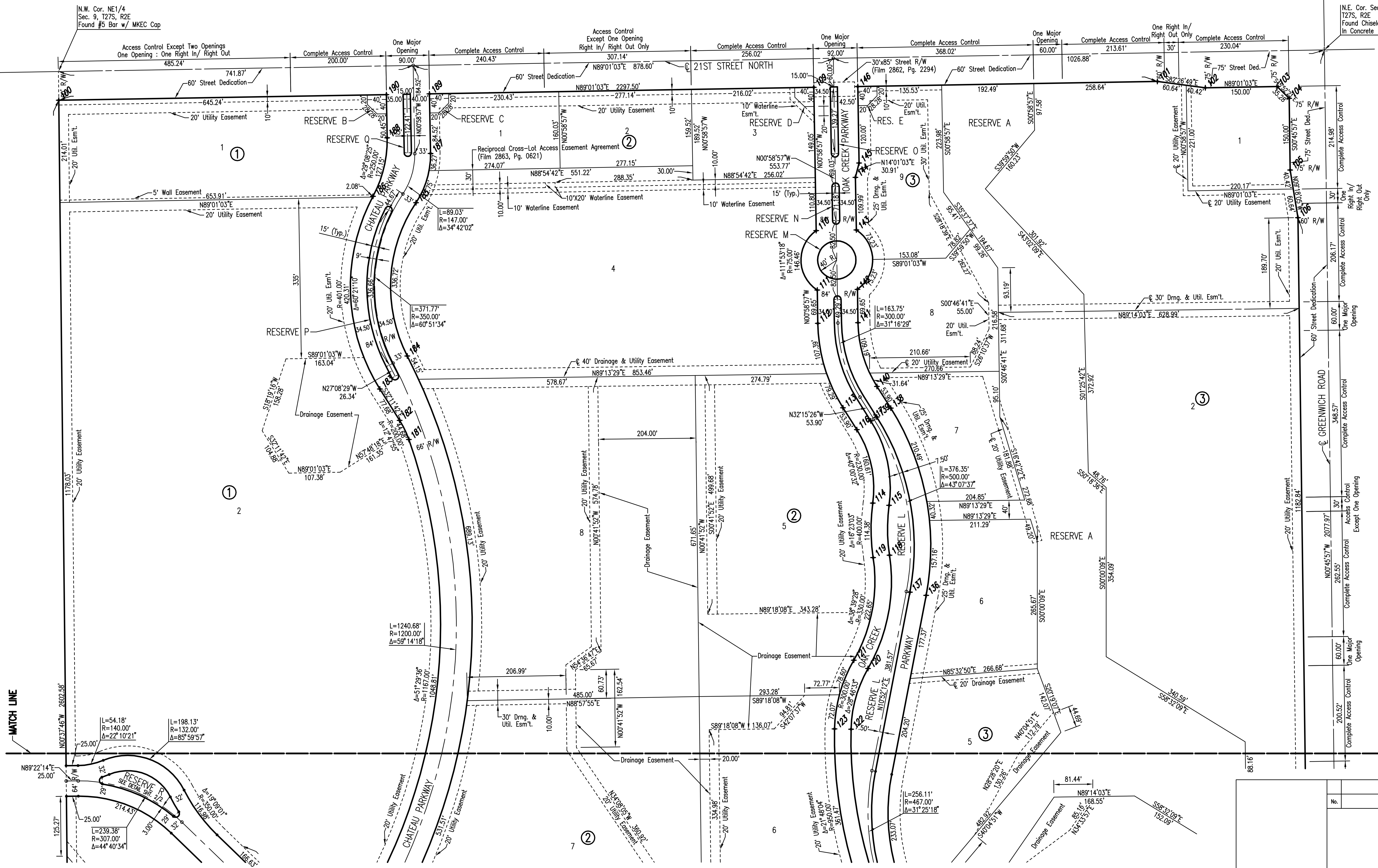
TYPICAL ENTRY MONUMENT RESERVE DETAIL

COORDINATE LIST

POINT	NORTH	EAST
100	387191.0795	2371434.5472
101	387230.4710	2373731.7050
102	387217.1868	2373831.8915
103	387219.7587	2373981.8744
104	387195.1917	2374007.2011
105	387045.2016	2374009.2062
106	386945.4670	2374025.5408
109	387218.1494	2373013.1553
110	386918.3458	2373018.2963
111	386794.0902	2373020.4270
112	386724.4479	2373021.6213
113	386547.7794	2373074.3548
114	386348.4215	2373136.5172
115	386343.7681	2373170.7019
116	386502.2002	2373103.1211
117	386520.6135	2373132.2965
118	386239.6086	2373171.5024
119	386234.4303	2373137.3932
120	386002.5099	2373126.7175
121	386019.7730	2373096.8473
122	385875.4473	2373091.1519
123	385876.1995	2373056.6601
136	386155.5463	2373248.0837
137	386162.0523	2373214.2027
138	386547.0326	2373174.1567
139	386528.6193	2373144.9814
140	386592.6119	2373145.3904
141	386725.8881	2373105.6089
142	386795.5304	2373104.4147
143	386919.7860	2373102.2840
144	387029.7611	2373100.3981
145	387059.7502	2373107.8851
146	387219.7287	2373105.1418
181	386481.3703	2372166.6752
182	386521.5103	2372147.2746
183	386587.2453	2372105.8872
184	386656.2872	2372163.1364
185	386976.8677	2372181.5558
186	386990.1316	2372091.6877
187	387079.8732	2372211.8092
188	387112.3936	2372121.2383
189	387204.3713	2372209.6743
190	387202.8282	2372119.6876

× 1000 = COORDINATE POINT NO.

DSNR: BDB OPER: BJS SCALE: 1"=100.00  
 C:\2004\04688\000\04688-000-C-PLAT 08-23-2005 09:19:52 am



No.	Revision	By	Date
OAK CREEK - PHASE 1			
<b>PLAT</b>			
JAMES L. ARMOUR, P.E. - CITY ENGINEER CITY OF WICHITA PROJECT NO. 472-84209			
<b>Professional Engineering Consultants, P.A.</b> 303 S. TOPKA • WICHITA, KANSAS 67202 316-262-2691 • FAX 316-262-3003			
Designed by	BDB, BLB	Job No.	35-04688-000
Drawn by	BJS	Date	October 2004
			Sheet 3 of 86

