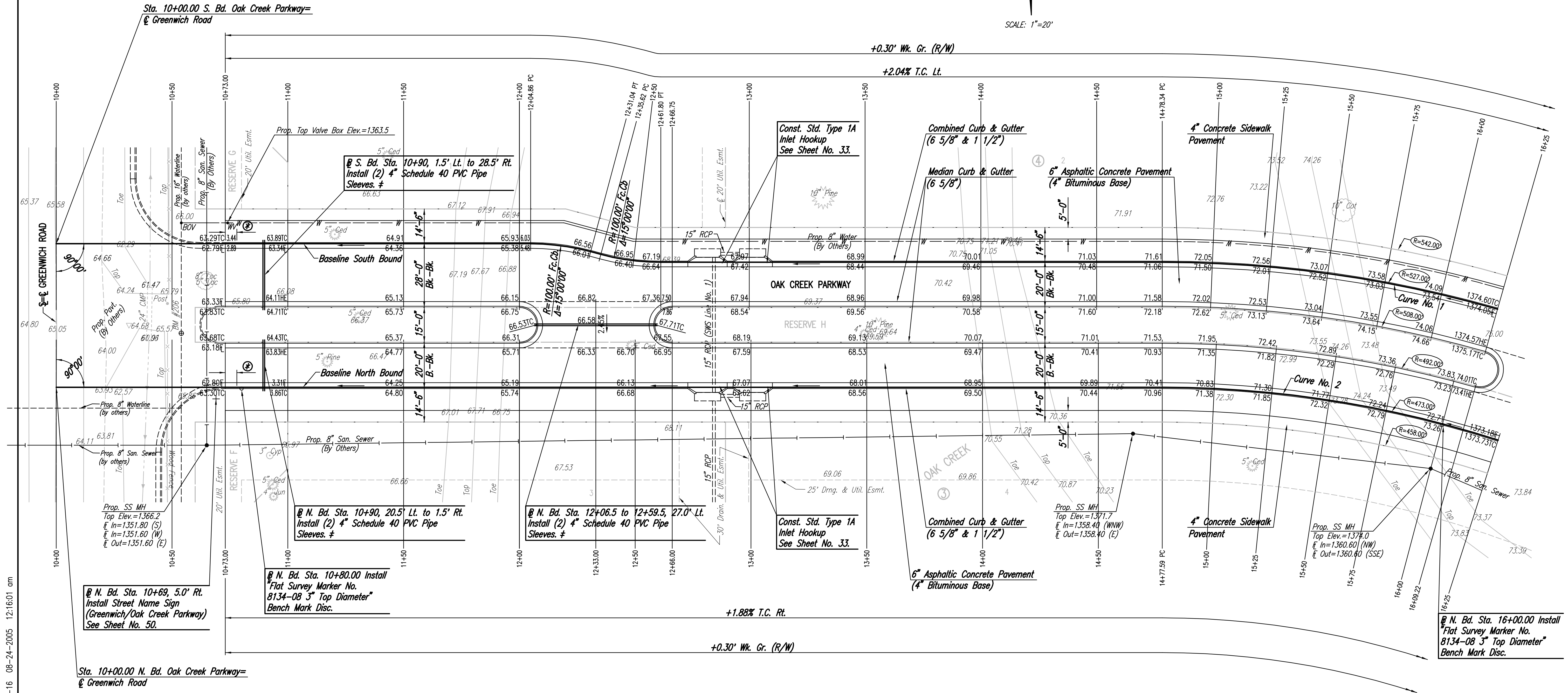


WATER VALVE BOX ELEVATIONS			
STREET	STATION	OFFSET	PROPOSED ELEVATION
OAK CREEK PARKWAY	@ S. Bd. 10+74.00	9.0' Lt.	1363.5

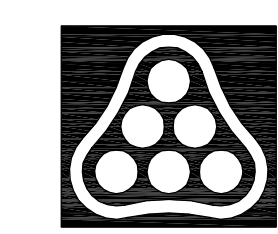
SCALE: 1"=20'



Note: Construction of Greenwich Rd. improvements (C.O.W. Proj. No. 472-84004) may be in progress concurrently with construction of Oak Creek Parkway. The contractor for this project shall coordinate efforts as necessary with the contractor for the Greenwich Rd. project. In the event Oak Creek Parkway is completed prior to the adjacent intersection pavement, the contractor shall sufficiently barricade Oak Creek Parkway until a permanent connection is made. Temporary pavement hookup of Oak Creek Parkway to Greenwich Rd. is not required.

⊕ 5' TRANSITION FROM KDOT MODIFIED TYPE I COMBINED CURB & GUTTER TO COMBINED CURB AND GUTTER (6 5/8" & 1 1/2"). TO BE BID AND PAID FOR AS "COMBINED CURB AND GUTTER (6 5/8" & 1 1/2)".

⊕ Sleeves to be 42" below top of curb. Each end of 4" PVC pipe sleeves shall be capped and marked with steel "T" posts or 2" dia. steel pipe a maximum of 12" above finished grade. Pipe, caps, markers, and installation thereof shall be Subsidiary to Median Comb. Curb & Gutter (6 5/8").



No.	Revision	By	Date
	OAK CREEK - PHASE 1		
OAK CREEK PARKWAY			
N. Bd. & S. Bd. STA. 10+00 TO STA. 16+25 JAMES L. ARMOUR, P.E. - CITY ENGINEER CITY OF WICHITA PROJECT NO. 472-84209			
Professional Engineering Consultants, P.A.			
303 S. TOPEKA • WICHITA, KANSAS 67202 316-262-2691 • FAX 316-262-3003			
Designed by	BDB, BLB	Job No.	35-04688-000
Drawn by	BJS	Date	October 2004
		Sheet	6 of 86

DSNR: BLB OPER: BJS SCALE: 1"=20.00
 C:\2004\04688\000\04688-000-C-SIR10-16 08-24-2005 12:16:01 am