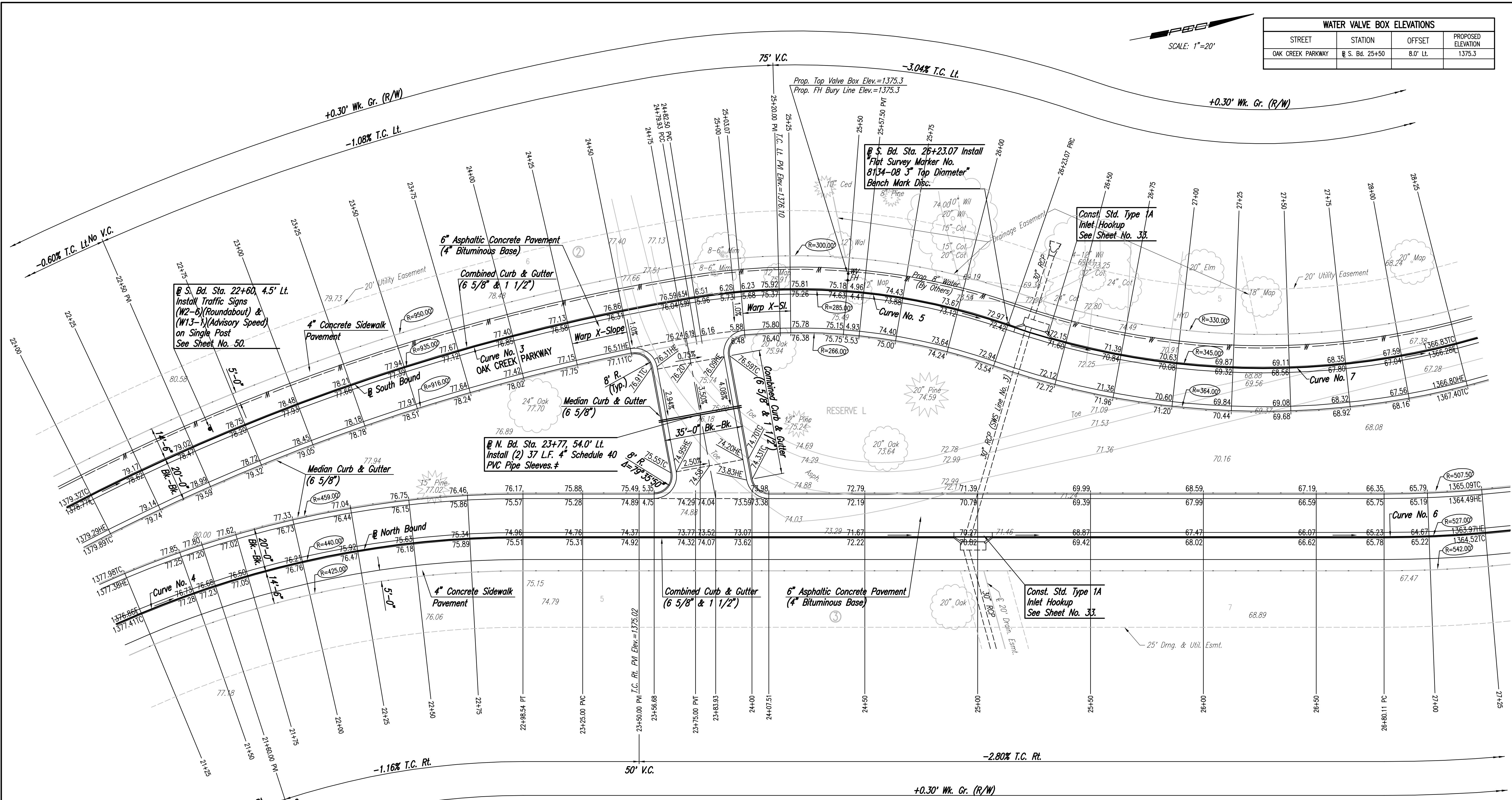




SCALE: 1"=20'

WATER VALVE BOX ELEVATIONS			
STREET	STATION	OFFSET	PROPOSED ELEVATION
OAK CREEK PARKWAY	@ S. Bd. 25+50	8.0' Lt.	1375.3



@ S. Bd. Sta. 22+60, 4.5' Lt.
Install Traffic Signs
(W2-6)(Roundabout) &
(W13-1)(Advisory Speed)
on Single Post
See Sheet No. 50.

@ S. Bd. Sta. 26+23.07 Install
Flat Survey Marker No.
8134-08 3" Top Diameter*
Bench Mark Disc.

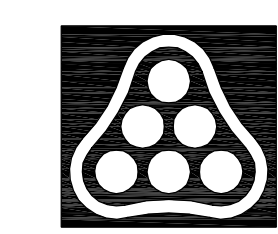
Const. Std. Type 1A
Inlet Hookup
See Sheet No. 33.

@ N. Bd. Sta. 23+77, 54.0' Lt.
Install (2) 37 L.F. 4" Schedule 40
PVC Pipe Sleeves. #

Const. Std. Type 1A
Inlet Hookup
See Sheet No. 33.

* Sleeves to be 42" below top of curb.
Each end of 4" PVC pipe sleeves shall be capped
and marked with steel "T" posts or 2" dia.
steel pipe a maximum of 12" above finished
grade. Pipe, caps, markers, and installation
thereof shall be Subsidiary to Median Comb. Curb
& Gutter (6 5/8").

DSNR: BLB OPER: BJS SCALE: 1"=20.00
 C:\2004\04688\000\04688-000-C-S1R22-28 08-24-2005 12:23:13 am



No.	Revision	By	Date
OAK CREEK - PHASE 1			
OAK CREEK PARKWAY			
@ N. Bd. STA. 22+00 TO STA. 27+25/@ S. Bd. STA. 22+25 TO STA. 28+25 JAMES L. ARMOUR, P.E. - CITY ENGINEER CITY OF WICHITA PROJECT NO. 472-84209			
Professional Engineering Consultants, P.A.			
303 S. TOPKA • WICHITA, KANSAS 67202 316-262-2691 • FAX 316-262-3003			
Designed by	BDB, BLB	Job No.	35-04688-000
Drawn by	BJS	Date	October 2004
			Sheet 8 of 86