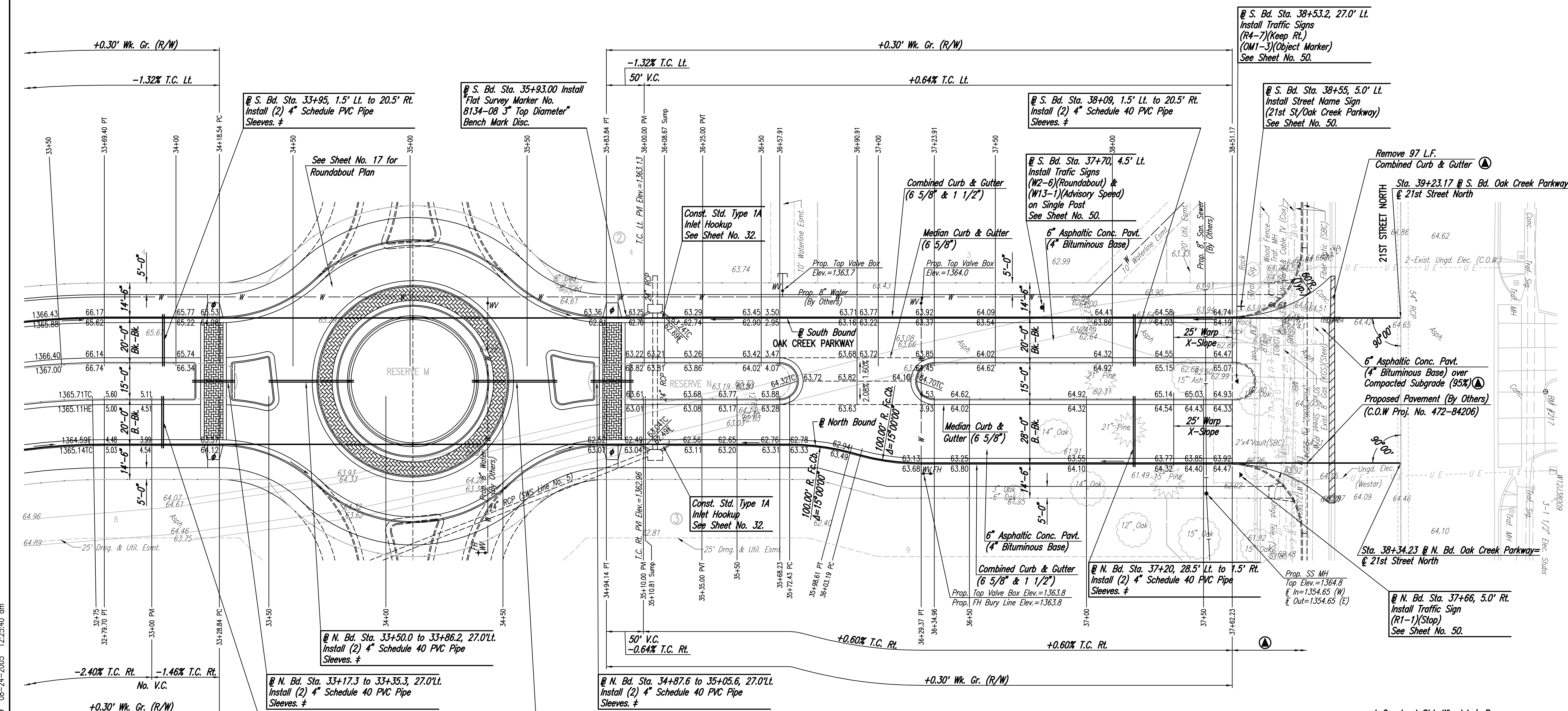


WATER VALVE BOX ELEVATIONS			
STREET	STATION	OFFSET	PROPOSED ELEVATION
OAK CREEK PARKWAY	@ S. Bd. 36+59.1	11.7' Lt.	1363.7
OAK CREEK PARKWAY	@ S. Bd. 37+18.3	6.3' Lt.	1364.0
OAK CREEK PARKWAY	@ N. Bd. 36+30.4	4.5' Rt.	1363.8

SCALE: 1"=20'



@ S. Bd. Sta. 38+53.2, 27.0' Lt.
Install Traffic Signs (R4-7)(Keep Rt.) (OM1-3)(Object Marker)
See Sheet No. 50.

@ S. Bd. Sta. 33+95, 1.5' Lt. to 20.5' Rt.
Install (2) 4" Schedule PVC Pipe Sleeves. #

@ S. Bd. Sta. 35+93.00 Install Flat Survey Marker No. 8134-08 3" Top Diameter Bench Mark Disc.

@ S. Bd. Sta. 38+09, 1.5' Lt. to 20.5' Rt.
Install (2) 4" Schedule 40 PVC Pipe Sleeves. #

@ S. Bd. Sta. 38+55, 5.0' Lt. Install Street Name Sign (21st St/Oak Creek Parkway)
See Sheet No. 50.

@ S. Bd. Sta. 37+70, 4.5' Lt. Install Traffic Signs (W2-6)(Roundabout) & (W13-1)(Advisory Speed) on Single Post
See Sheet No. 50.

Remove 97 L.F. Combined Curb & Gutter @ S. Bd. Sta. 39+23.17 @ S. Bd. Oak Creek Parkway= @ 21st Street North

6" Asphaltic Conc. Pavt. (4" Bituminous Base) over Compacted Subgrade (95%) Proposed Pavement (By Others) (C.O.W. Proj. No. 472-84206)

@ N. Bd. Sta. 37+20, 28.5' Lt. to 1.5' Rt. Install (2) 4" Schedule 40 PVC Pipe Sleeves. #

@ N. Bd. Sta. 37+66, 5.0' Rt. Install Traffic Sign (R1-1)(Stop)
See Sheet No. 50.

@ N. Bd. Sta. 33+50.0 to 33+86.2, 27.0' Lt. Install (2) 4" Schedule 40 PVC Pipe Sleeves. #

@ N. Bd. Sta. 33+17.3 to 33+35.3, 27.0' Lt. Install (2) 4" Schedule 40 PVC Pipe Sleeves. #

@ N. Bd. Sta. 33+05, 20.5' Lt. to 1.5' Rt. Install (2) 4" Schedule 40 PVC Pipe Sleeves. #

@ N. Bd. Sta. 34+87.6 to 35+05.6, 27.0' Lt. Install (2) 4" Schedule 40 PVC Pipe Sleeves. #

@ N. Bd. Sta. 34+36.8 to 34+73.0, 27.0' Lt. Install (2) 4" Schedule 40 PVC Pipe Sleeves. #

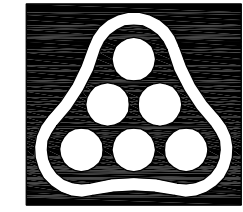
All work shown north of N.Bd. Sta. 37+62.23 and S.Bd. Sta. 38+51.17 is contingent on the status of City of Wichita Project No. 472-84206, "21st St. N. Decel Lanes", which is scheduled for construction concurrently with this project. The bid item "Temporary Surfacing (Pavt. Hookup)" shall be full payment for all work necessary in this zone to provide a temporary pavement connection, including all excavation, compaction, clearing, combined curb and gutter removal, asphalt paving, incidental traffic control, and all other labor, equipment, and materials necessary to complete the work.

If, in the opinion of the Engineer, the work included in this zone is not necessary due to adjacent construction on the decel lane project, this bid item shall be 100% underrun.

Sleeves to be 42" below top of curb. Each end of 4" PVC pipe sleeves shall be capped and marked with steel "T" posts or 2" dia. steel pipe a maximum of 12" above finished grade. Pipe, caps, markers, and installation thereof shall be Subsidiary to Median Comb. Curb & Gutter (6 5/8").

Construct Std. Wheelchair Ramp

No.	Revision	By	Date
OAK CREEK PARKWAY - PHASE 1			
OAK CREEK PARKWAY			
@ N. Bd. STA. 33+00 TO 37+62.23/@ S. Bd. STA. 33+50 TO 38+51.17 JAMES L. ARMOUR, P.E. - CITY ENGINEER CITY OF WICHITA PROJECT NO. 472-84209			
Professional Engineering Consultants, P.A. 303 S. TOPKA • WICHITA, KANSAS 67202 316-262-2691 • FAX 316-262-3003			
Designed by	BDB, BLB	Job No.	35-04688-000
Drawn by	BJS	Date	October 2004
			Sheet 10 of 86



DSNR: BLB OPER: BJS SCALE: 1"=20.00
C:\2004\04688\000\04688-000-C-S1R34-39 08-24-2005 12:25:40 am