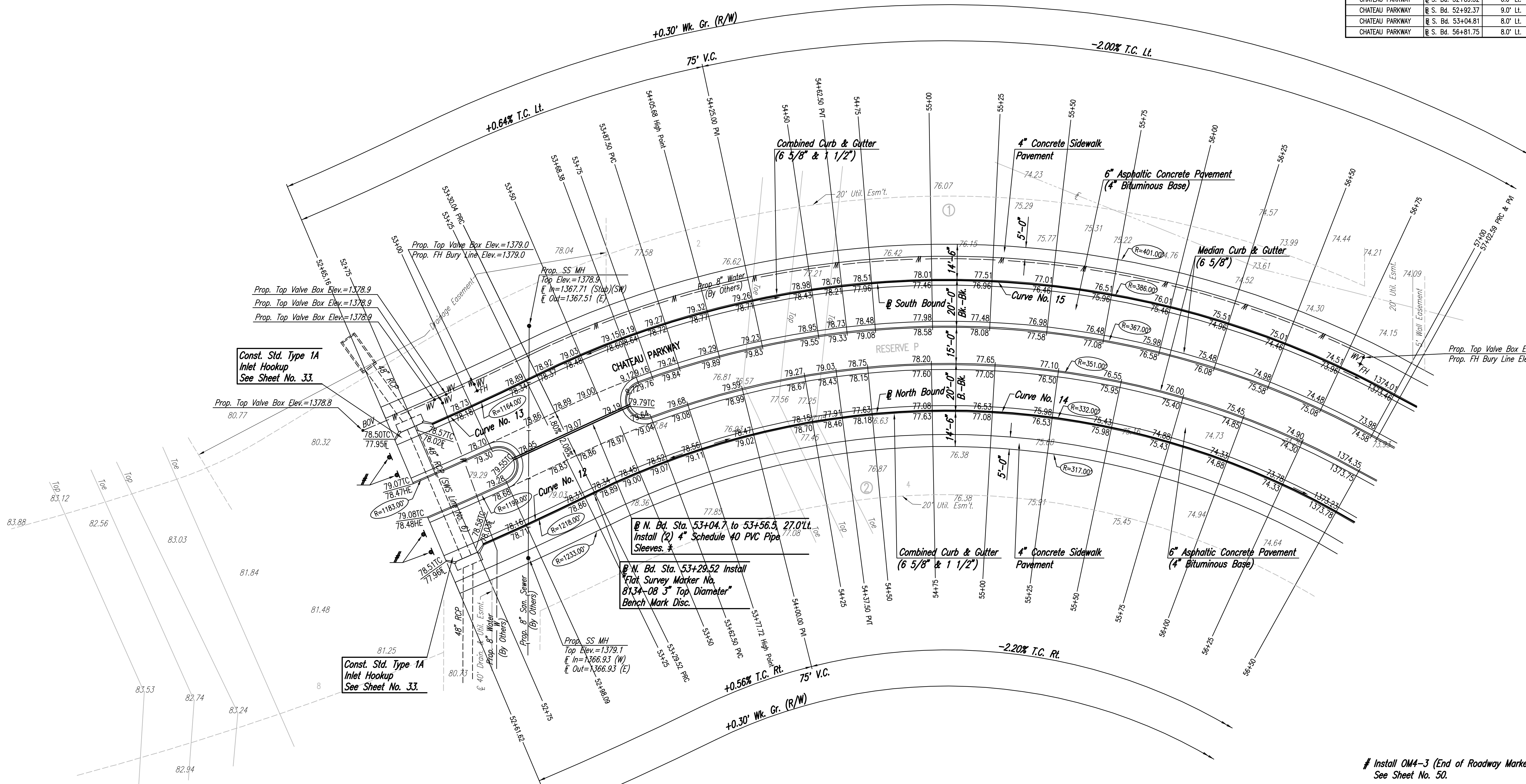


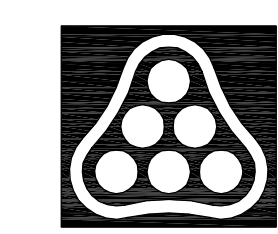
WATER VALVE BOX ELEVATIONS			
STREET	STATION	OFFSET	PROPOSED ELEVATION
CHATEAU PARKWAY	@ S. Bd. 52+54.43	9.0' Lt.	1378.8
CHATEAU PARKWAY	@ S. Bd. 52+87.03	9.0' Lt.	1378.9
CHATEAU PARKWAY	@ S. Bd. 52+89.52	6.0' Lt.	1378.9
CHATEAU PARKWAY	@ S. Bd. 52+92.37	9.0' Lt.	1378.9
CHATEAU PARKWAY	@ S. Bd. 53+04.81	8.0' Lt.	1379.0
CHATEAU PARKWAY	@ S. Bd. 56+81.75	8.0' Lt.	1374.0



DSNR: BLB OPER: BJS SCALE: 1"=20.00  
 C:\2004\04688\000\04688-000-C-S1R51-56 08-24-2005 12:30:27 am

# Sleeves to be 42" below top of curb.  
 Each end of 4" PVC pipe sleeves shall be capped and marked with steel "T" posts or 2" dia. steel pipe a maximum of 12" above finished grade. Pipe, caps, markers, and installation thereof shall be *Subsidiary* to Median Comb. Curb & Gutter (6 5/8").

# Install OMA-3 (End of Roadway Marker)  
 See Sheet No. 50.



No.	Revision	By	Date
OAK CREEK - PHASE 1			
<b>CHATEAU PARKWAY</b>			
@ N. Bd. STA. 52+61.62 TO 56+50/@ S. Bd. STA. 52+65.16 TO 57+00 JAMES L. ARMOUR, P.E. - CITY ENGINEER CITY OF WICHITA PROJECT NO. 472-84209			
<b>Professional Engineering Consultants, P.A.</b> 303 S. TOPEKA • WICHITA, KANSAS 67202 316-262-2691 • FAX 316-262-3003			
Designed by	BDB, BLB	Job No.	35-04688-000
Drawn by	BJS	Date	October 2004
			Sheet 11 of 86