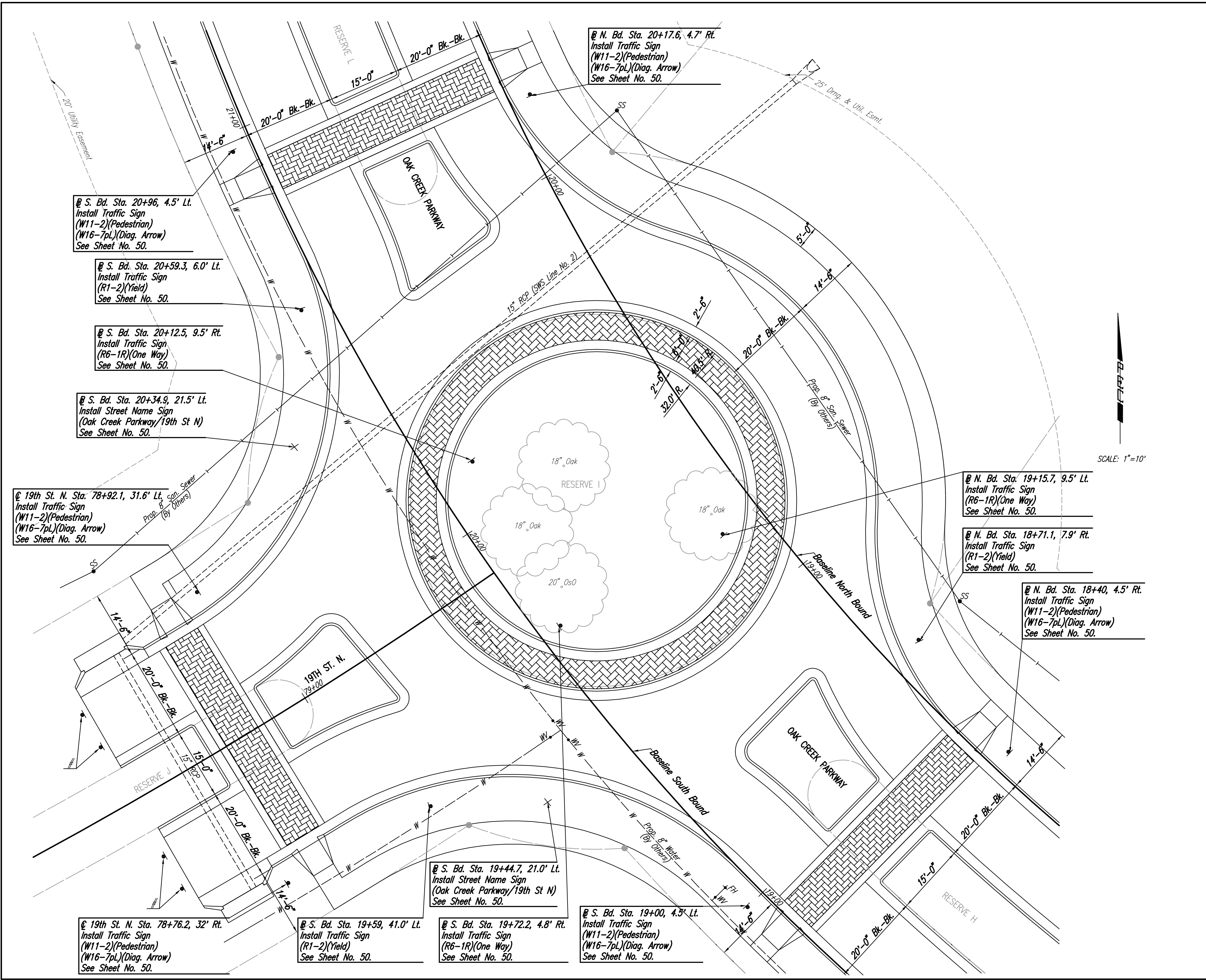


DSNR: BLB OPER: BJS SCALE: 1"=10.00
 C:\2004\04688\000\04688-000-C-ROUNDABOUT-DETAILS_1 08-23-2005 11:46:25 am



SCALE: 1"=10'
 NORTH

@ S. Bd. Sta. 20+96, 4.5' Lt.
 Install Traffic Sign
 (W11-2)(Pedestrian)
 (W16-7pL)(Diag. Arrow)
 See Sheet No. 50.

@ S. Bd. Sta. 20+59.3, 6.0' Lt.
 Install Traffic Sign
 (R1-2)(Yield)
 See Sheet No. 50.

@ S. Bd. Sta. 20+12.5, 9.5' Rt.
 Install Traffic Sign
 (R6-1R)(One Way)
 See Sheet No. 50.

@ S. Bd. Sta. 20+34.9, 21.5' Lt.
 Install Street Name Sign
 (Oak Creek Parkway/19th St N)
 See Sheet No. 50.

@ 19th St. N. Sta. 78+92.1, 31.6' Lt.
 Install Traffic Sign
 (W11-2)(Pedestrian)
 (W16-7pL)(Diag. Arrow)
 See Sheet No. 50.

@ N. Bd. Sta. 19+15.7, 9.5' Lt.
 Install Traffic Sign
 (R6-1R)(One Way)
 See Sheet No. 50.

@ N. Bd. Sta. 18+71.1, 7.9' Rt.
 Install Traffic Sign
 (R1-2)(Yield)
 See Sheet No. 50.

@ N. Bd. Sta. 18+40, 4.5' Rt.
 Install Traffic Sign
 (W11-2)(Pedestrian)
 (W16-7pL)(Diag. Arrow)
 See Sheet No. 50.

@ S. Bd. Sta. 19+44.7, 21.0' Lt.
 Install Street Name Sign
 (Oak Creek Parkway/19th St N)
 See Sheet No. 50.

@ 19th St. N. Sta. 78+76.2, 32' Rt.
 Install Traffic Sign
 (W11-2)(Pedestrian)
 (W16-7pL)(Diag. Arrow)
 See Sheet No. 50.

@ S. Bd. Sta. 19+59, 41.0' Lt.
 Install Traffic Sign
 (R1-2)(Yield)
 See Sheet No. 50.

@ S. Bd. Sta. 19+72.2, 4.8' Rt.
 Install Traffic Sign
 (R6-1R)(One Way)
 See Sheet No. 50.

@ S. Bd. Sta. 19+00, 4.9' Lt.
 Install Traffic Sign
 (W11-2)(Pedestrian)
 (W16-7pL)(Diag. Arrow)
 See Sheet No. 50.

Install OMA-3 (End of Roadway Marker)
 See Sheet No. 50.

No.	Revision	By	Date
OAK CREEK - PHASE 1			
ROUNDABOUT SIGNING PLAN			
STA. 20+00			
JAMES L. ARMOUR, P.E. - CITY ENGINEER CITY OF WICHITA PROJECT NO. 472-84209			
Professional Engineering Consultants, P.A.			
303 S. TOPKA • WICHITA, KANSAS 67202 316-262-2691 • FAX 316-262-3003			
Designed by	BDB, BLB	Job No.	35-04688-000
Drawn by	BJS	Date	October 2004
			Sheet 16 of 86