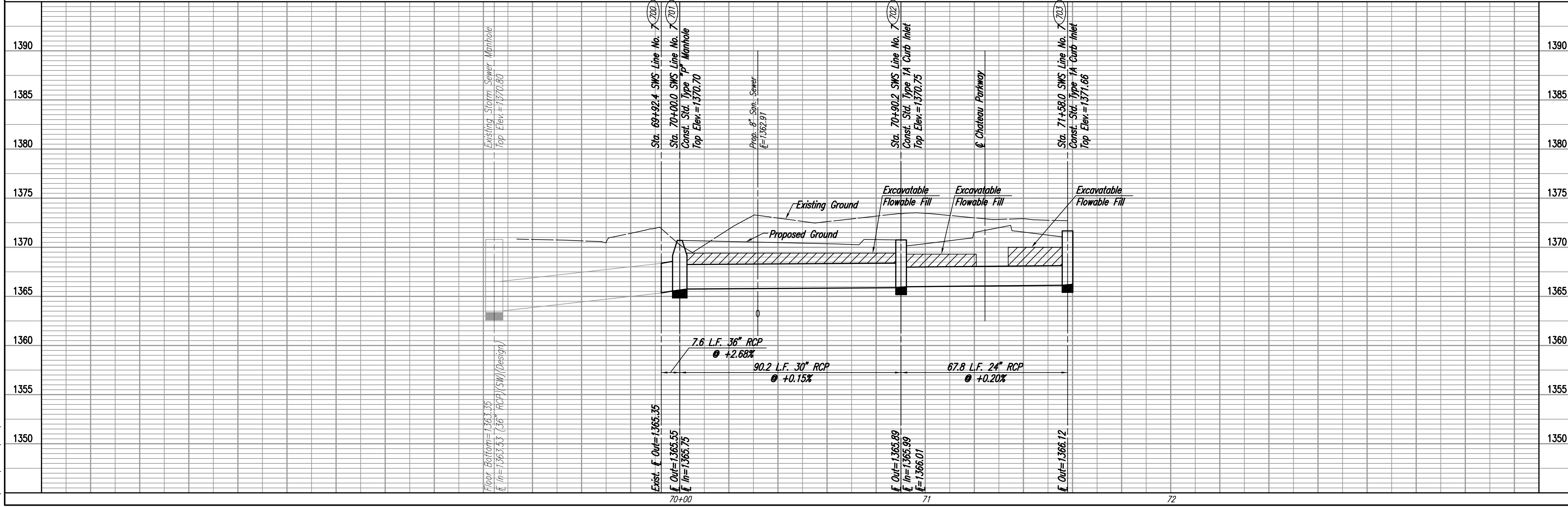


PLAN	CHECKED	DATE
	CHECKED	

PROFILE	CHECKED	DATE
	CHECKED	

DSNR, BJB OPER, BJS SCALE: 1"=20.00  
 C:\2004\04688\000\04688-000-C-SWSLINE7 08-23-2005 10:02:49 am



Sta. 69+92.4 SWS Line No. 7=  
 @ N. Bd. Chateau Parkway Sta. 59+18.5, 13.2' Lt.  
 Remove Existing Area Inlet  
 Begin 36" RCP Construction  
 Install 7.6 L.F. 36" RCP (SW)  
 Connect to Existing 36" RCP.

Sta. 70+00.0 SWS Line No. 7=  
 @ N. Bd. Chateau Parkway Sta. 59+12.45, 17.75' Lt.  
 Const. Std. Type "P" Manhole  
 Dia.=5'-0"  
 Top Elev.=1370.70  
 Install 90.2 L.F. 30" RCP (SE)  
 See Sheet No. 35.

Install 84 L.F.  
 Excavatable Flowable  
 Fill to Elev. 1369.4

Sta. 70+90.2 SWS Line No. 7=  
 @ N. Bd. Chateau Parkway Sta. 58+25.00, 4.17' Rt.  
 Const. Std. Type 1A Curb Inlet  
 L=5'-0", W=4'-0"  
 Top Elev.=1370.75  
 Install 67.8 L.F. 24" RCP (W)  
 See Sheet No. 32.

Install 28 L.F.  
 Excavatable Flowable  
 Fill to Elev. 1369.3

Install 22 L.F.  
 Excavatable Flowable  
 Fill to Elev. 1370.0

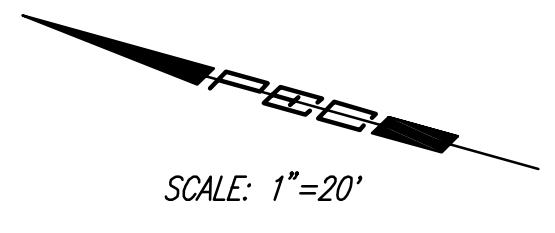
Sta. 71+58.0 SWS Line No. 7=  
 @ S. Bd. Chateau Parkway Sta. 58+46.20, 3.67' Lt.  
 Const. Std. Type 1A Curb Inlet  
 L=5'-0", W=3'-0"  
 Top Elev.=1371.66  
 See Sheet No. 32.

SDM#4 (Pt. #1109)  
 Top=1370.80  
 Floor F=1363.35  
 I=1363.53 36" RCP (SW)(Design)  
 I=1363.46 48" RCP (W)(Design)  
 I=1363.26 54" RCP (E)(Design)

SDA#1 (Pt. #1100)  
 Top=1372.05  
 I=1365.35 36" RCP(NE)

Prop. SS MH  
 Top Elev.=1372.2  
 I In=1363.48 (W)  
 I Out=1363.48 (E)

CAUTION !!!  
 Proposed 8" San. Sewer  
 City of Wichita



COORDINATE LIST		
POINT	NORTH	EAST
700	387,215.7480	2,372,180.9726
701	387,209.6474	2,372,176.8290
702	387,122.5845	2,372,200.2452
703	387,121.4214	2,372,132.4152

700 = COORDINATE POINT NO.  
 SEE SHEET NO. 3 FOR PLAT COORDINATES