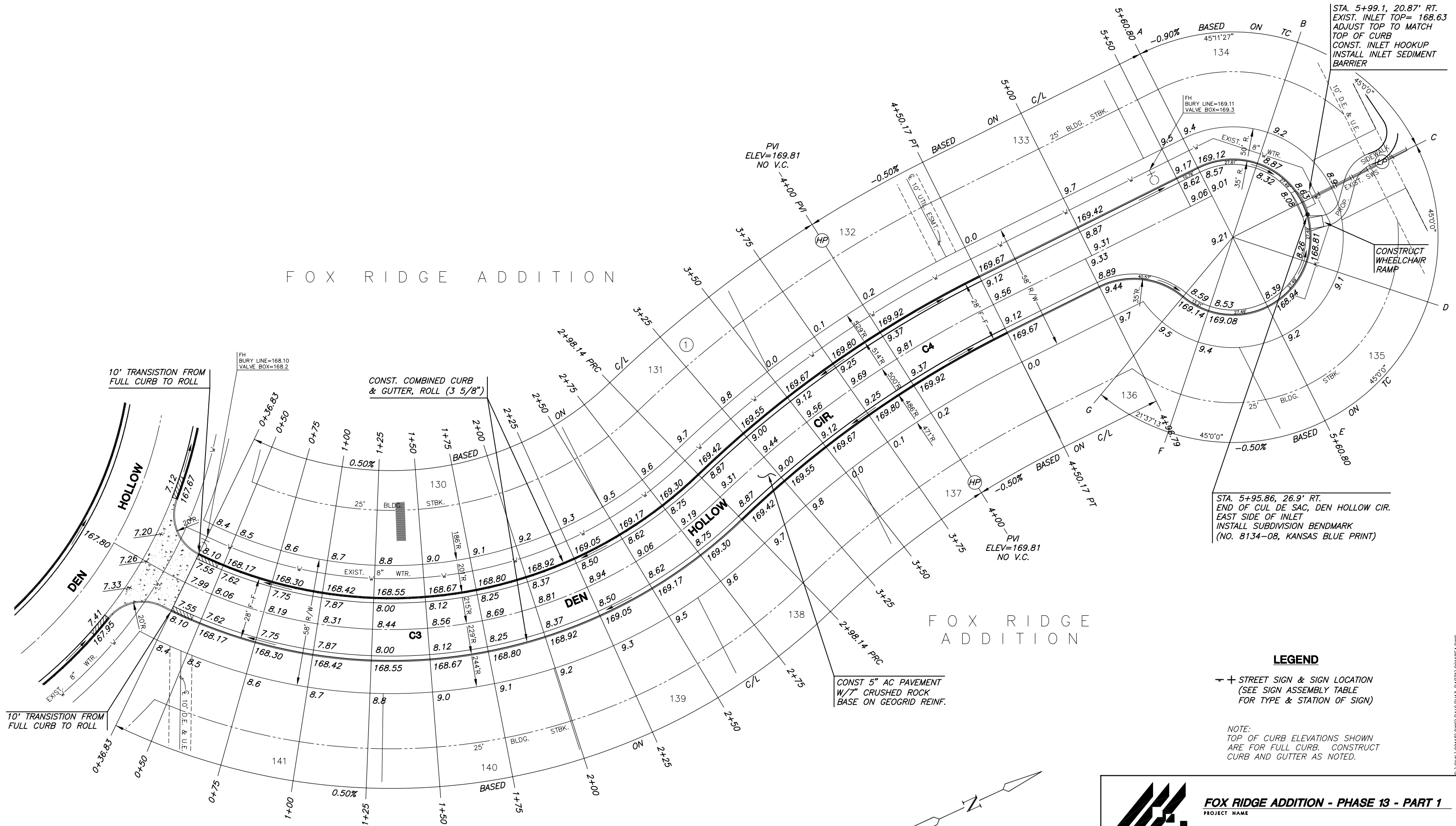


FOX RIDGE ADDITION



STA. 5+99.1, 20.87' RT.  
 EXIST. INLET TOP= 168.63  
 ADJUST TOP TO MATCH  
 TOP OF CURB  
 CONST. INLET HOOKUP  
 INSTALL INLET SEDIMENT  
 BARRIER


STA. 5+95.86, 26.9' RT.  
 END OF CUL DE SAC, DEN HOLLOW CIR.  
 EAST SIDE OF INLET  
 INSTALL SUBDIVISION BENCHMARK  
 (NO. 8134-08, KANSAS BLUE PRINT)

LEGEND

⊕ STREET SIGN & SIGN LOCATION  
 (SEE SIGN ASSEMBLY TABLE  
 FOR TYPE & STATION OF SIGN)

NOTE:  
 TOP OF CURB ELEVATIONS SHOWN  
 ARE FOR FULL CURB. CONSTRUCT  
 CURB AND GUTTER AS NOTED.



 <b>MKEC</b> ENGINEERING CONSULTANTS 411 N. WEBB ROAD WICHITA, KS. 67206 316-684-9600	<b>FOX RIDGE ADDITION - PHASE 13 - PART 1</b>	
	PROJECT NAME	
	<b>DEN HOLLOW CIRCLE PAVING</b>	
	SHEET TITLE	
DFL	MKrK	GJA
DESIGN BY:	DRAWN BY:	CHECKED BY:
SEPTEMBER 2005	99118	10 / 22
DATE	JOB NO.	SHEET/OF

S:\CIVIL\99118\DWG\PAV\PH13.PART1\99118E4.DWG