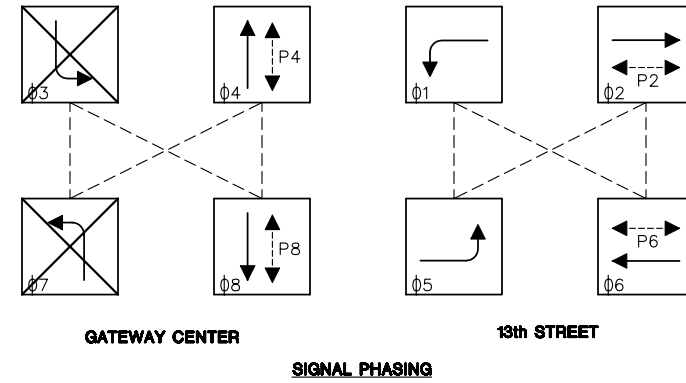
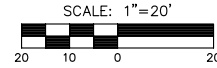


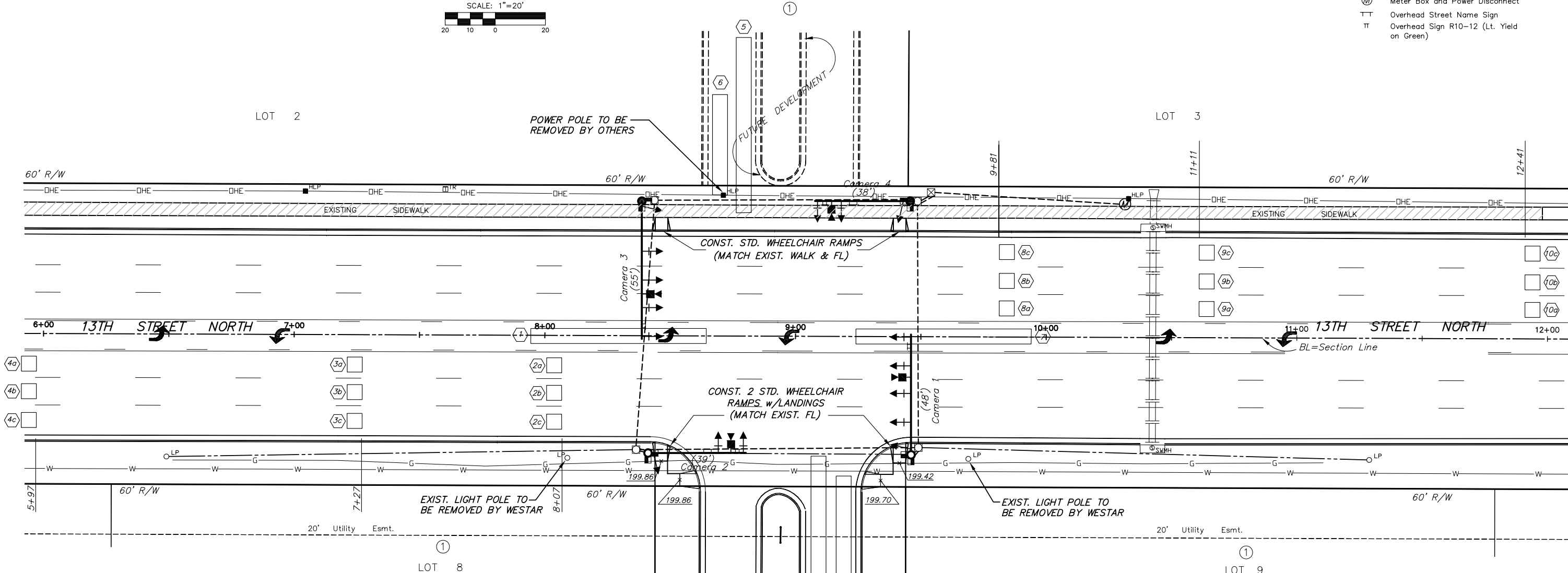
**GENERAL NOTES**

1. Conduit shall be jacked or bored.
2. Placement of Service/Junction Boxes, Conduit Runs and Controller are typical and may be adjusted as directed by the Engineer to facilitate installation.
3. The Contractor shall contact utility companies which may be affected by the installation of Traffic Signalization prior to any construction.
4. Contractor shall install a 1-1/2" rigid galvanized conduit from the pole located at Sta. 10+33, 55' left, to the traffic signal controller located at Sta. 9+54, 57' left, to carry the metered conductor from the meter to the traffic signal controller. Meter address is 11420 E. 13th St.
5. Exact Video Detection Camera locations to be at the direction of the Manufacturer's Representative. Video Camera cable terminations, camera fine tuning, system set-up, and programming will be performed by the supplier with the assistance of the contractor.
6. See Signal Pole Details for additional Traffic Signal Structures requirement.



- LEGEND**
- Steel Traffic Signal Pole (Joint use)
  - Steel Traffic Signal Pole (Std. Pole)
  - ⊙ Pedestal Pole (15' Aluminum)
  - Traffic Signal Indication (Type A) w/Back Plate
  - ⊥ Mast Arm Suspended Traffic Signal
  - Video Detection Camera
  - Service Box
  - ⊠ Controller
  - ▣ Pedestrian Indication
  - △ Junction Box
  - ▭ Vehicle Detection Zone
  - ① Detector Number
  - Rigid Galvanized Conduit (RGC)
  - - - - - PVC Conduit
  - ⊙ Meter Box and Power Disconnect
  - ⊥ Overhead Street Name Sign
  - ⊥ Overhead Sign R10-12 (Lt. Yield on Green)

DILLON 12TH ADDITION



**TYPE 170 CONTROLLER SETTINGS**

INTERVAL	"WAPITI PROGRAM" PHASE								TIME CLOCK	NORMAL DISPLAY FEATURES							
	1 WBLT	2 EB	3 SBLT	4 NB	5 EBLT	6 WB	7 NBLT	8 SB		1	2	3	4	5	6	7	8
MAX	0	30	80	30	80	80	30	0	YEAR	VEH RECALL							
MAX 2	1	30	80	30	80	80	30	1	MONTH	PED RECALL							
WALK	2			8		8		2	DAY/MONTH	RED LOCK							
FL. DW.	3	20		25		20	25	3	DAY/WEEK	YEL LOCK	X	X	X	X	X	X	
MAX INIT.	4	6	10	6	10	6	10	4	HOUR	Ø PERMIT	X	X	X	X	X	X	
MIN GREEN	5	5	8	5	8	5	8	5	MINUTE	PED PHASES							
TBR	6	1	15	1	15	1	15	1.0	6	SECOND	LEAD PHASES	X	X	X	X	X	
TTR	7	1	25	1	25	1	25	1.0	7	DBL ENTRY							
	8							8		SEQUENTIAL							
PASSAGE	9	1.0	2.0	1.0	2.0	1.0	2.0	1.0	9	START UP YEL							
MIN GAP	a	1.0	2.0	1.0	2.0	1.0	2.0	1.0	a	OVERLAP A							
ADD ACT	b	1.0	2.0	1.0	2.0	1.0	2.0	1.0	b	OVERLAP B							
YELLOW	c	3.0	4.0	3.0	4.0	3.0	4.0	3.0	c	OVERLAP C							
RED CLR.	d	1.0	2.0	1.5	2.0	1.5	2.0	1.5	d	OVERLAP D							
RED REV.	e								e	EXCLUSIVE							
WALK II	f								f	SIM GAP							

THE GATEWAY CENTER ADDITION LOT 12

**MISCELLANEOUS CONSTRUCTION ITEMS**

ITEM	UNIT	QUANTITY
STD. WHEELCHAIR RAMPS	EA.	2
STD. WHEELCHAIR RAMPS/w LANDING	EA.	4

COST OF ALL ABOVE ITEMS SUBSIDIARY TO CONSTRUCTION

**DETECTION ZONES**

CAMERA NO.	ZONE NO.	SIZES (W x L)	MOVEMENT CALLED
1	1	6x70	5
1	2a, 2b, 2c	6x6	2
1	3a, 3b, 3c	6x6	2
1	4a, 4b, 4c	6x6	2
2	5	6x70	8
2	6	6x40	8
3	7	6x70	1
3	8a, 8b, 8c	6x6	6
3	9a, 9b, 9c	6x6	6
3	10a, 10b, 10c	6x6	6
4	11	6x70	4
4	12	6x40	4

**GATEWAY CENTER ADDITION**  
PROJECT NAME

**SIGNAL PLAN**  
SHEET TITLE

DESIGN BY: **KKL** DRAWN BY: **GJA** CHECKED BY: **GJA**

DATE: **APRIL 2004** JOB NO.: **9815B5G1** SHEET/OF: **2 / 8**

411 N. WEBB ROAD  
WICHITA, KS. 67206  
316-684-9600