

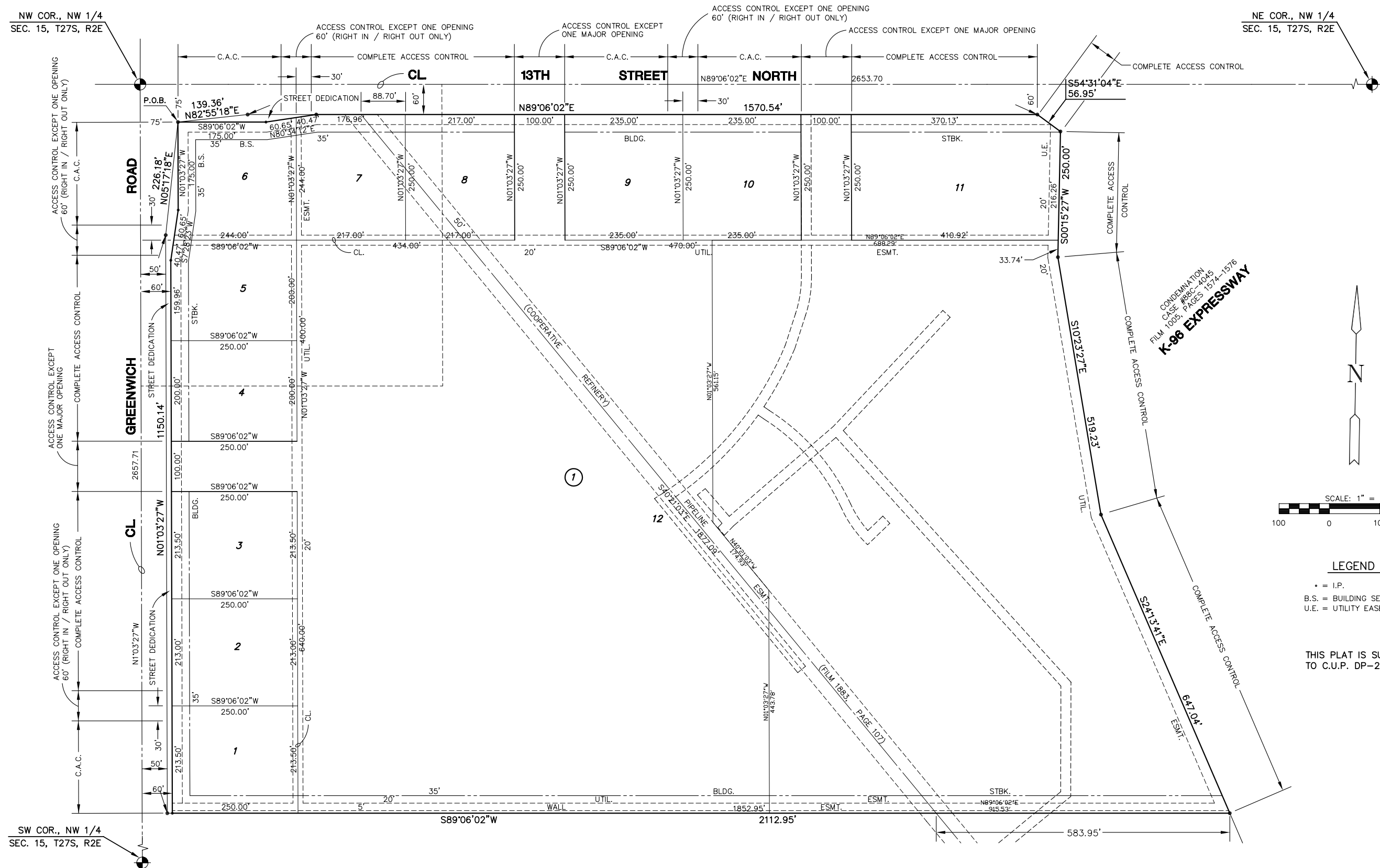
FINAL PLAT

THE GATEWAY CENTER ADDITION

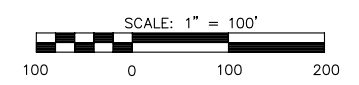
AN ADDITION TO WICHITA, SEDGWICK COUNTY, KANSAS

NW COR., NW 1/4
SEC. 15, T27S, R2E

NE COR., NW 1/4
SEC. 15, T27S, R2E



CONDEMNATION
CASE #BSC-4045
FILM 1005, PAGES 1574-1576
K-96 EXPRESSWAY



LEGEND

- = I.P.
- B.S. = BUILDING SETBACK
- U.E. = UTILITY EASEMENT

THIS PLAT IS SUBJECT
TO C.U.P. DP-239