

BENCHMARK:
City of Wichita benchmark at
the SE corner of intersection
of 135th Street West and 13th
Street North.
Elev. = 167.83 (City Datum)

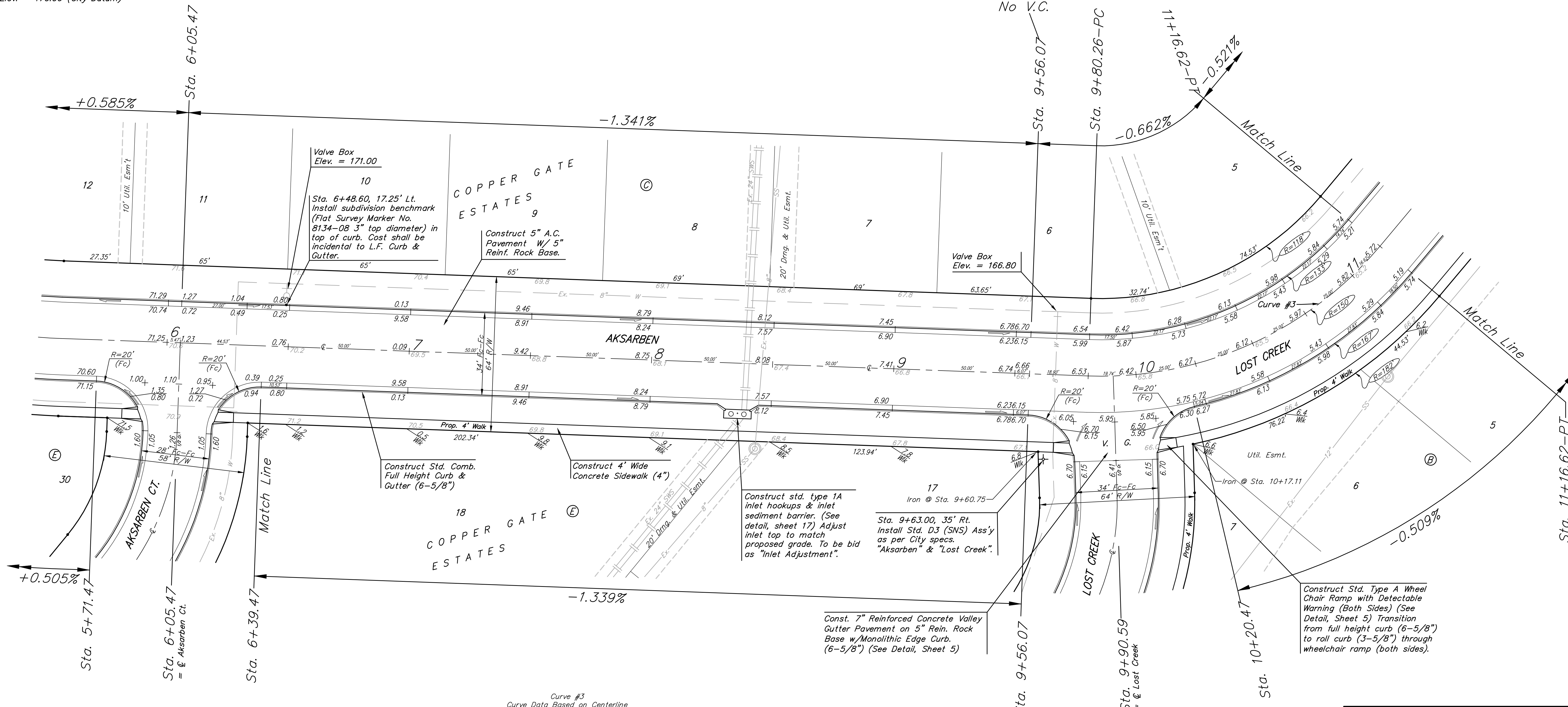
Brass Benchmark Disc
Adjacent to Fire Hydrant at E.
End of E. Curb Return of
Ponderosa & Ponderosa Ct.
Elev. = 170.96 (City Datum)

P.V.I.
Elev. = 171.40
54' V.C.

P.V.I.
Elev. = 166.70
No V.C.

P.V.I.
Elev. = 165.74
No V.C.

Scale: 1" = 20'
• = Iron



Curve #3
Curve Data Based on Centerline
Rad. = 150' Delta = 52°05'13" Tangent = 73.30'
Arc = 136.36' L.C. = 131.72' Def./ft. = 11.45943 Min.

Station	Arc	FACE CHORD LENGTHS		Defl.	T. Defl.
		8' Lt.	8' Rt.		
9+80.26	-	-	-	0°00'00"	0°00'00"
10+00.00	19.74'	16.44'	23.01'	3°46'13"	3°46'13"
10+20.47	20.47'	17.05'	23.86'	3°54'34"	7°40'47"
10+25.00	4.53'	3.77'	5.28'	0°51'55"	8°32'42"
10+50.00	25.00'	20.81'	29.13'	4°46'29"	13°19'11"
10+75.00	25.00'	20.81'	29.13'	4°46'29"	18°05'40"
11+00.00	25.00'	20.81'	29.13'	4°46'29"	22°52'09"
11+16.62	16.62'	13.84'	19.38'	3°10'28"	26°02'37"

Baughman Copper Gate Estates - Phase III
AKSARBEN
STA. 6+39.47 TO STA. 11+16.62

Baughman Company, P.A. 315 Ellis St. Wichita, KS 67211 P 316-262-7271 F 316-262-0149
ENGINEERING | SURVEYING | PLANNING | LANDSCAPE ARCHITECTURE

PROJECT NUMBER 472-83671	DESIGN TMS
REVISIONS:	DRAWN DATE 4/13/05
	APPROVED
	SCALE Noted
	SHEET 7 OF 30

CopperGate\Phase 3\Str2.dwg 04-06-E956