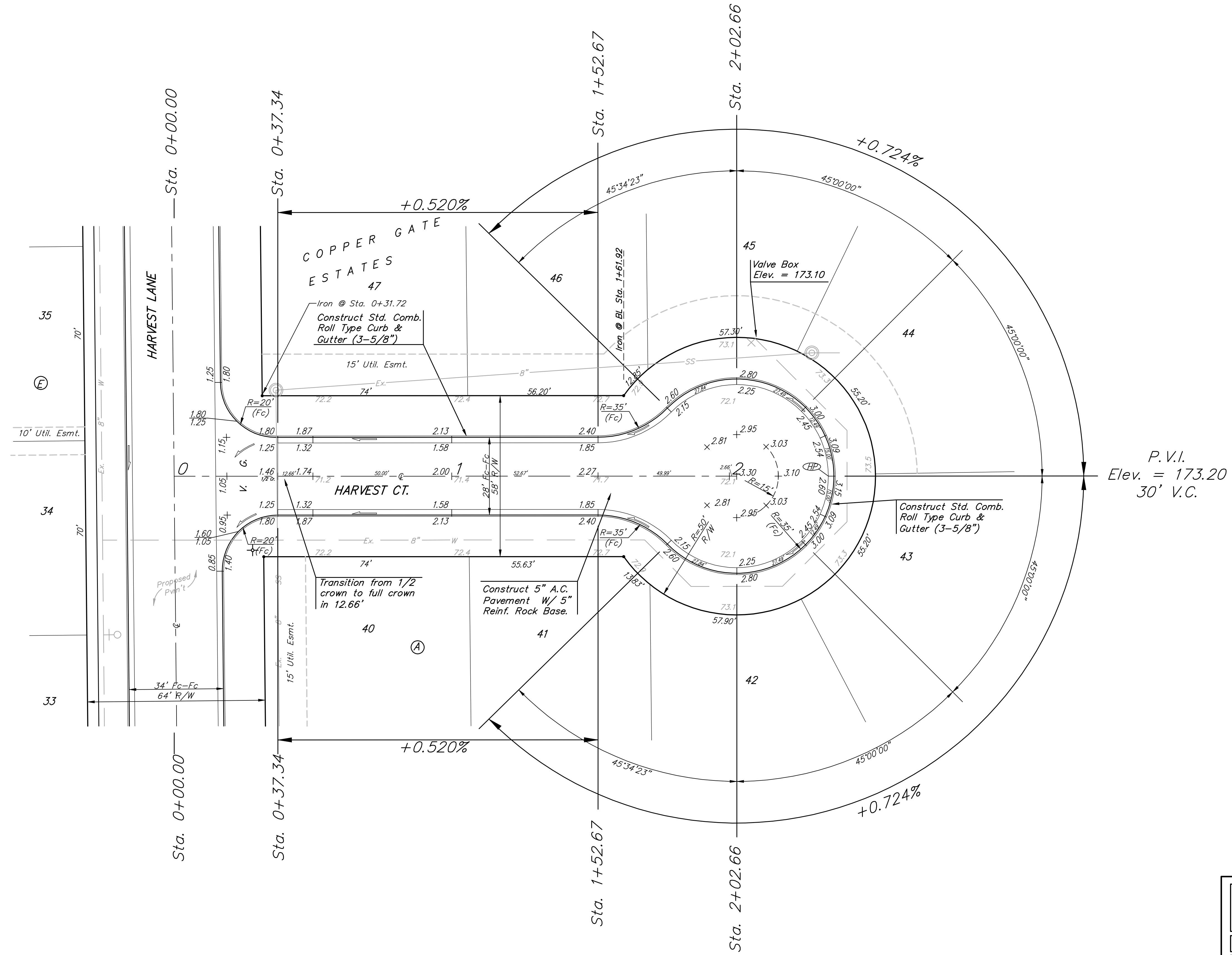


BENCHMARK:
 City of Wichita benchmark at
 the SE corner of intersection
 of 135th Street West and 13th
 Street North.
 Elev. = 167.83 (City Datum)

Brass Benchmark Disc
 Adjacent to Fire Hydrant at E.
 End of E. Curb Return of
 Ponderosa & Ponderosa Ct.
 Elev. = 170.96 (City Datum)

Scale: 1" = 20'
 • = Iron



P.V.I.
 Elev. = 173.20
 30' V.C.

NOTE: ROLL TYPE CURB & GUTTER TO BE CONSTRUCTED ON THE PAVEMENT SHOWN ON THIS SHEET. TOP OF CURB ELEVATIONS ARE GIVEN FOR FULL HEIGHT CURB.

		Copper Gate Estates - Phase III HARVEST CT. STA. 0+00 TO STA. 2+02.66	
<small>Baughman Company, P.A. 315 Ellis St. Wichita, KS 67211 P 316-262-7271 F 316-262-0149 ENGINEERING SURVEYING PLANNING LANDSCAPE ARCHITECTURE</small>			
PROJECT NUMBER 472-83671	DESIGN NBW	DRAWN TMS	DATE 4/13/05
REVISIONS:	APPROVED	SCALE Noted	SHEET 10 OF 30
<small>CopperGate\Phase 3\St5.dwg</small>		<small>04-06-B956</small>	