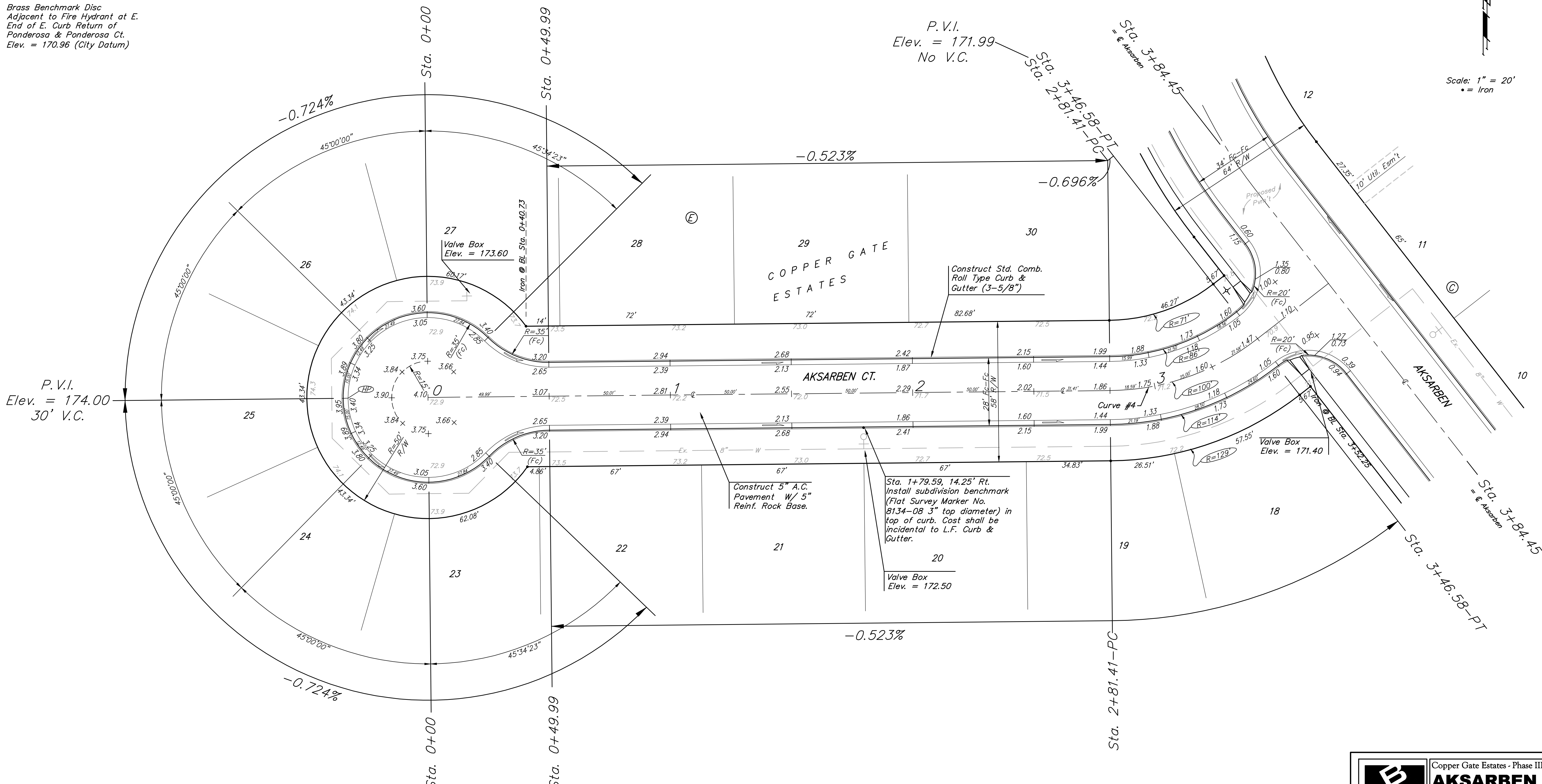
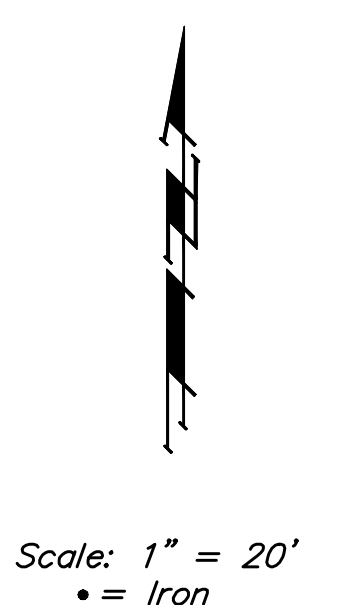


BENCHMARK:
 City of Wichita benchmark at
 the SE corner of intersection
 of 135th Street West and 13th
 Street North.
 Elev. = 167.83 (City Datum)

Brass Benchmark Disc
 Adjacent to Fire Hydrant at E.
 End of E. Curb Return of
 Ponderosa & Ponderosa Ct.
 Elev. = 170.96 (City Datum)



Curve #4
 Curve Data Based on Centerline
 Rad. = 100' Delta = 37° 20' 13" Tangent = 33.79'
 Arc = 65.17' L.C. = 64.02' Def/Ft. = 17.18749 Min.

Station	Arc	FACE CHORD LENGTHS		Defl.	T. Defl.
		8" Lt.	8" Rt.		
2+81.41	—	—	—	0'00"00"	0'00"00"
3+00.00	18.59'	14.48'	22.65'	5'19"31"	5'19"31"
3+25.00	25.00'	19.45'	30.42'	7'09"41"	12'29"12"
3+46.58	21.58'	16.80'	26.27'	6'10"55"	18'40"07"

NOTE: ROLL TYPE CURB & GUTTER TO BE CONSTRUCTED ON THE PAVEMENT SHOWN ON THIS SHEET. TOP OF CURB ELEVATIONS ARE GIVEN FOR FULL HEIGHT CURB.

Baughman		Copper Gate Estates - Phase III	
PROJECT NUMBER 472-83671		AKSARBEN CT. STA. 0+00 TO STA. 3+84.45	
Baughman Company, P.A. 315 Ellis St. Wichita, KS 67211 P 316-262-7271 F 316-262-0149 ENGINEERING SURVEYING PLANNING LANDSCAPE ARCHITECTURE			
DESIGN NBW	DRAWN TMS	APPROVED	DATE 4/13/05
REVISIONS:		SCALE Noted	
		SHEET 11 OF 30	
CopperGate\Phase 3\Std6.dwg		04-06-E956	