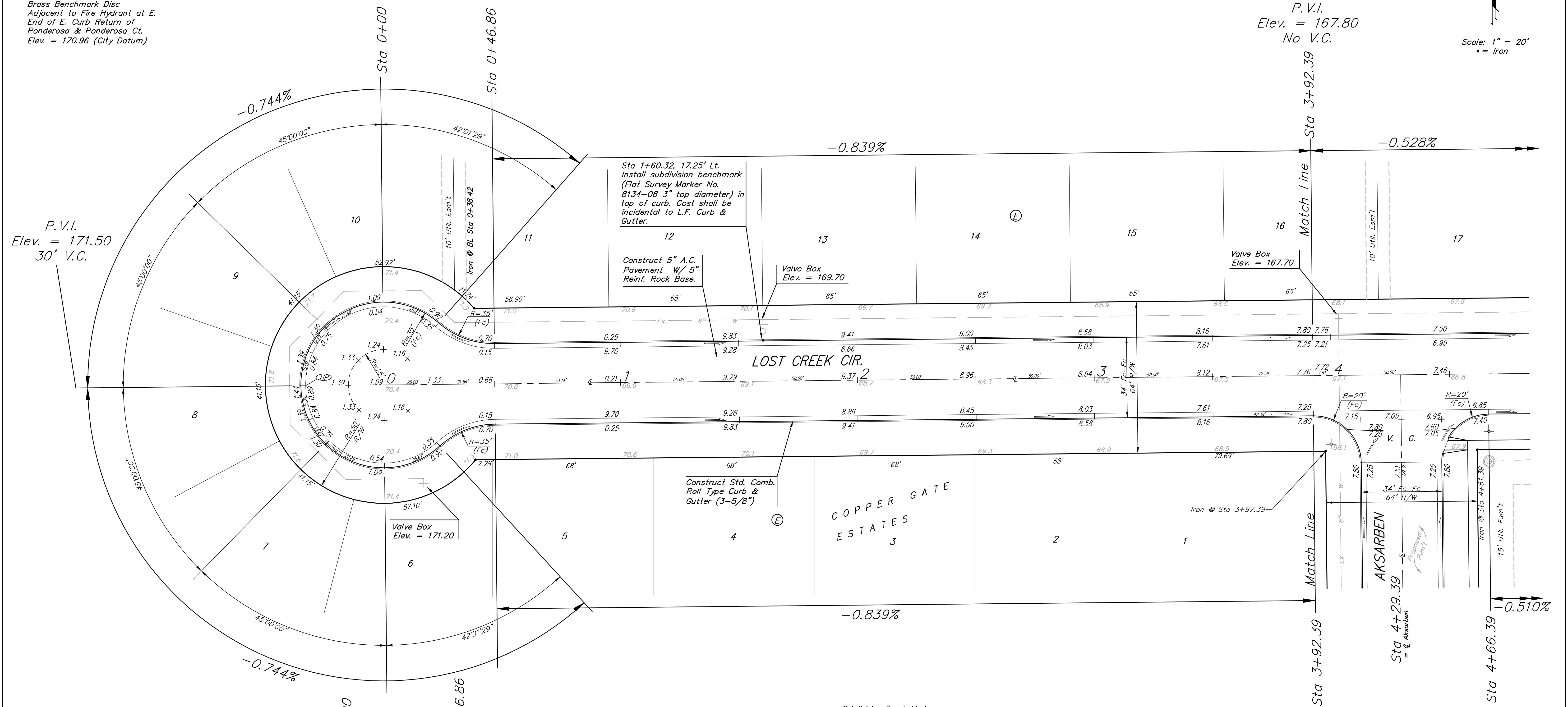
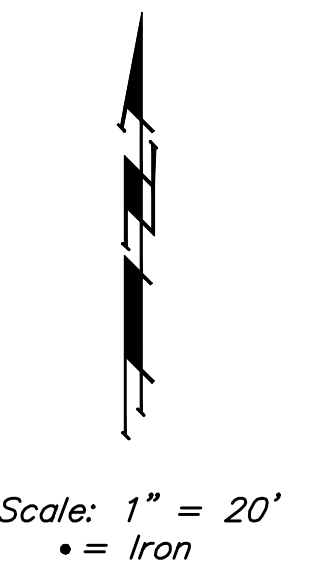


BENCHMARK:  
 City of Wichita benchmark at  
 the SE corner of intersection  
 of 135th Street West and 13th  
 Street North.  
 Elev. = 167.83 (City Datum)

Brass Benchmark Disc  
 Adjacent to Fire Hydrant at E.  
 End of E. Curb Return of  
 Ponderosa & Ponderosa Ct.  
 Elev. = 170.96 (City Datum)

P. V.I.  
 Elev. = 167.80  
 No V.C.



Subdivision Bench Marks		
Street & Station	Location Description	Elevation
Aksarben 6+48.60, 17.25' Lt.	Adjacent to Fire Hydrant near common lot corner of Lots 10&11, Block C.	
Aksarben 12+87.48, 17.25' Lt.	Adjacent to Fire Hydrant near common lot corner of Lots 2&3, Block C.	
Harvest Lane 2+16.93, 17.25' Rt.	Adjacent to Fire Hydrant near common lot corner of Lots 33&34, Block E	
Aksarben Ct. 1+79.59, 14.25' Rt.	Adjacent to Fire Hydrant near common lot corner of Lots 20&21, Block E	
Lost Creek Cir. 1+60.32, 17.25' Lt.	Adjacent to Fire Hydrant near common lot corner of Lots 12&13, Block E	

NOTE: ROLL TYPE CURB & GUTTER TO BE CONSTRUCTED ON THE PAVEMENT SHOWN ON THIS SHEET. TOP OF CURB ELEVATIONS ARE GIVEN FOR FULL HEIGHT CURB.

**Baughman**

Copper Gate Estates - Phase III  
**LOST CREEK CIR.**  
 STA 0+00 TO STA 4+66.39

---

Baughman Company, P.A. 315 Ellis St. Wichita, KS 67211 P 3162627271 F 3162620149  
 ENGINEERING | SURVEYING | PLANNING | LANDSCAPE ARCHITECTURE

PROJECT NUMBER 472-83671	DESIGN TMS
REVISIONS:	DRAWN TMS
	DATE 4/13/05
	APPROVED
	SCALE Noted
	SHEET 12 OF 30

CopperGate\Phase 3\Str7.dwg 04-06-B956