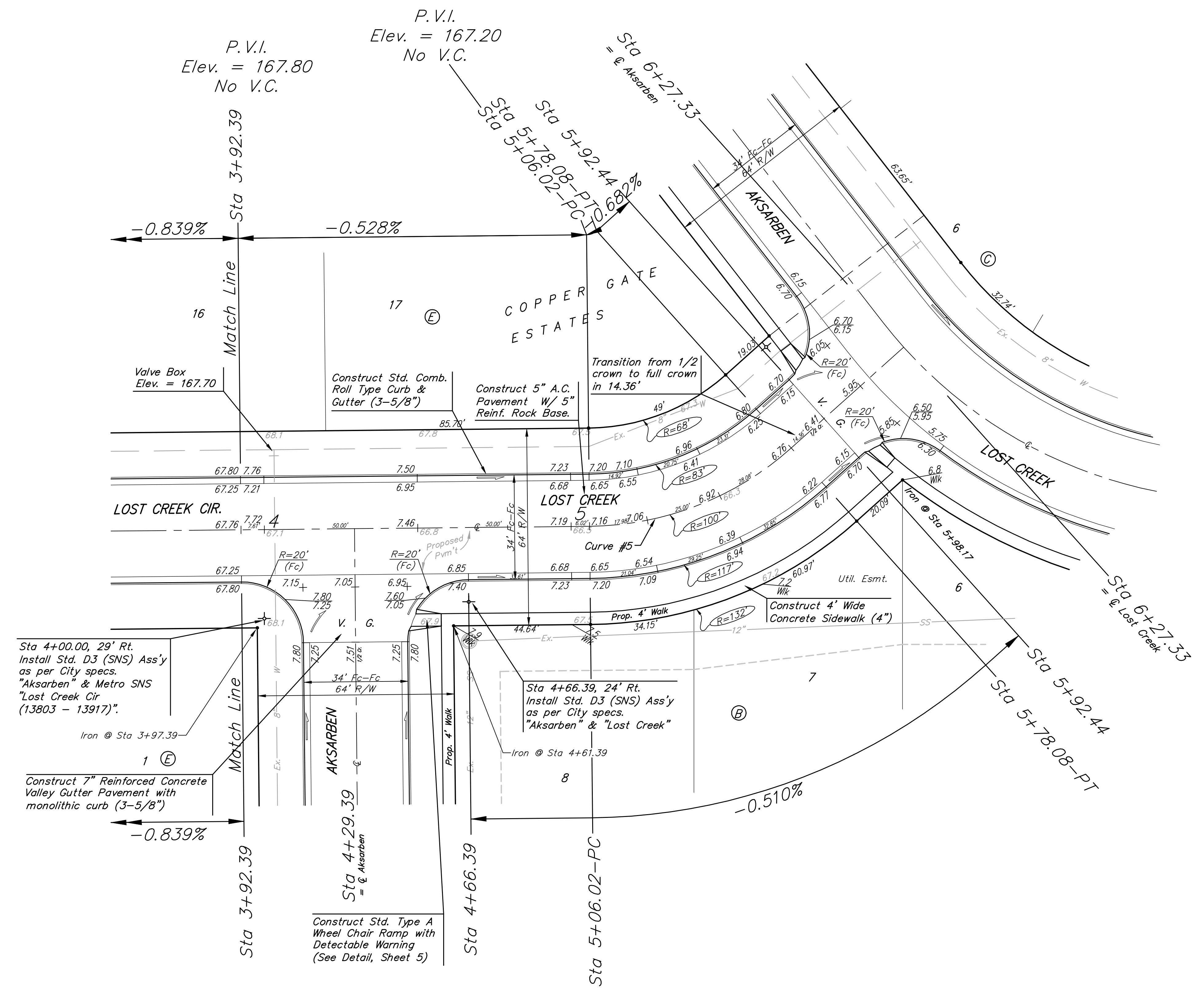
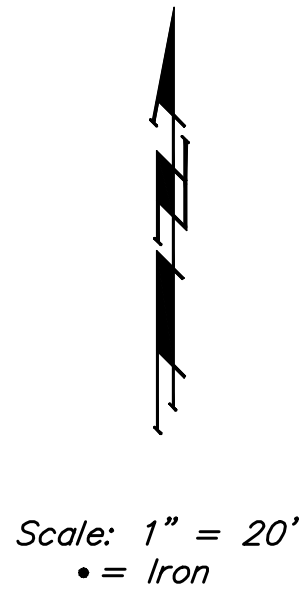


BENCHMARK:
 City of Wichita benchmark at
 the SE corner of intersection
 of 135th Street West and 13th
 Street North.
 Elev. = 167.83 (City Datum)

Brass Benchmark Disc
 Adjacent to Fire Hydrant at E.
 End of E. Curb Return of
 Ponderosa & Ponderosa Ct.
 Elev. = 170.96 (City Datum)



Curve #5
 Curve Data Based on Centerline
 Rad. = 100' Delta = 41°17'06" Tangent = 37.67'
 Arc = 72.06' L.C. = 70.51' Def./Rt. = 17.18776 Min.

Station	Arc	FACE CHORD LENGTHS		Defl.	T. Defl.
		8' Lt.	8' Rt.		
5+06.02	-	-	-	0'00'00"	0'00'00"
5+25.00	18.98'	14.21'	23.69'	5'26'13"	5'26'13"
5+50.00	25.00'	18.70'	31.17'	7'09'42"	12'35'55"
5+75.00	25.00'	18.70'	31.17'	7'09'42"	19'45'37"
5+78.08	3.08'	2.31'	3.85'	0'52'56"	20'38'33"

NOTE: ROLL TYPE CURB & GUTTER TO BE CONSTRUCTED ON THE PAVEMENT SHOWN ON THIS SHEET. TOP OF CURB ELEVATIONS ARE GIVEN FOR FULL HEIGHT CURB.

		Copper Gate Estates - Phase III	
		LOST CREEK CIR.	
PROJECT NUMBER 472-83671		DESIGN	DRAWN TMS
REVISIONS:		APPROVED	DATE 4/13/05
		SCALE Noted	SHEET
		13 OF 30	
CopperGate\Phase 3\Str8.dwg		04-06-E956	