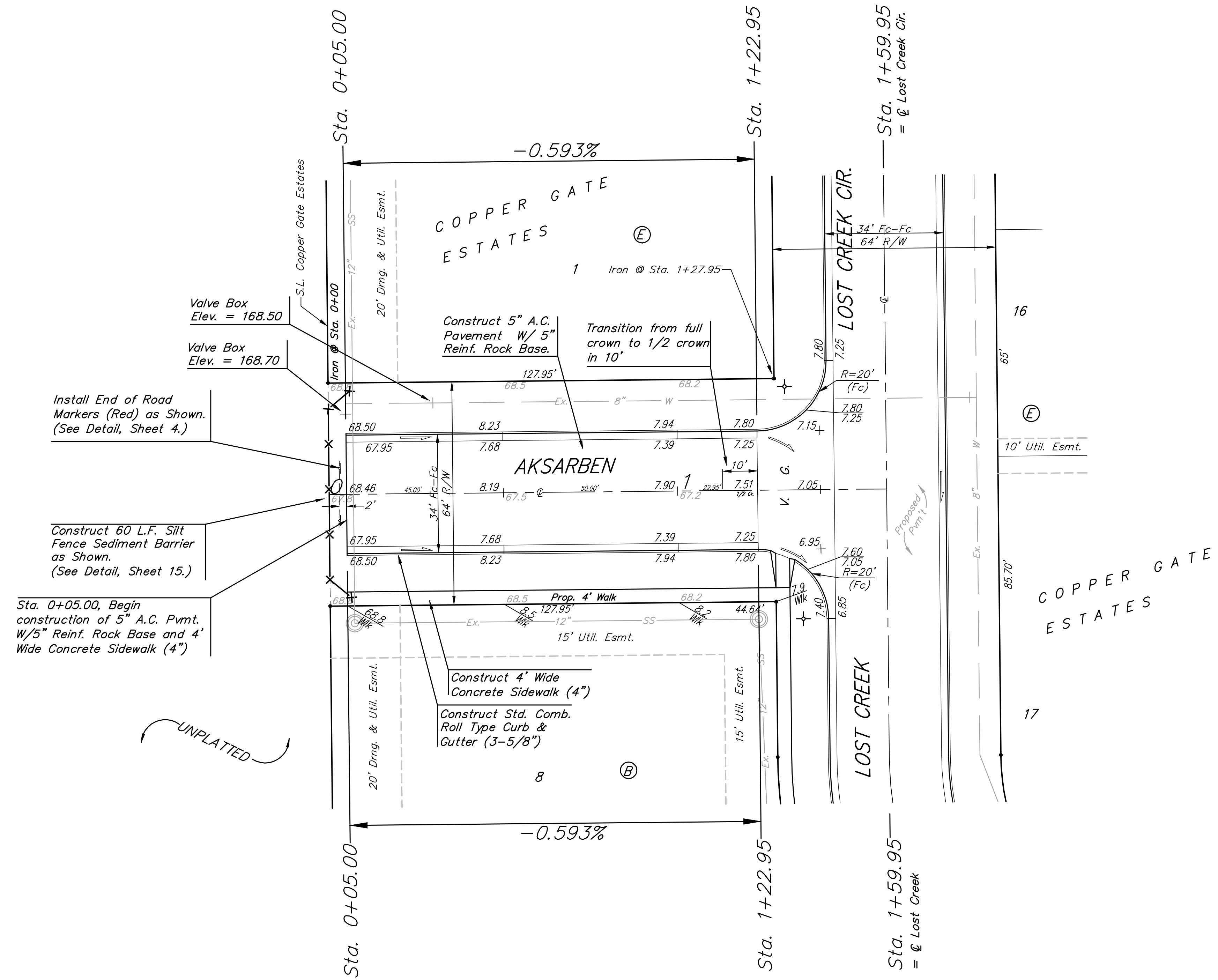


BENCHMARK:  
 City of Wichita benchmark at  
 the SE corner of intersection  
 of 135th Street West and 13th  
 Street North.  
 Elev. = 167.83 (City Datum)

Brass Benchmark Disc  
 Adjacent to Fire Hydrant at E.  
 End of E. Curb Return of  
 Ponderosa & Ponderosa Ct.  
 Elev. = 170.96 (City Datum)

Scale: 1" = 20'  
 • = Iron



NOTE: ROLL TYPE CURB & GUTTER TO BE CONSTRUCTED ON THE PAVEMENT SHOWN ON THIS SHEET. TOP OF CURB ELEVATIONS ARE GIVEN FOR FULL HEIGHT CURB.

	Copper Gate Estates - Phase III	
	<b>AKSARBEN</b> STA. 0+05.00 TO STA. 1+59.95	
<small>Baughman Company, P.A. 315 Ellis St. Wichita, KS 67211 P 316262-7271 F 316262-0149          ENGINEERING   SURVEYING   PLANNING   LANDSCAPE ARCHITECTURE</small>		
PROJECT NUMBER 472-83671	DESIGN NBW	DRAWN TMS
REVISIONS:	APPROVED	DATE 4/13/05
SCALE Noted		SHEET <b>14</b> OF <b>30</b>
<small>CopperGate\Phase 3\Sta9.dwg</small>		<small>04-06-B956</small>