

PLAN	CHECKED	DATE
	CHECKED	

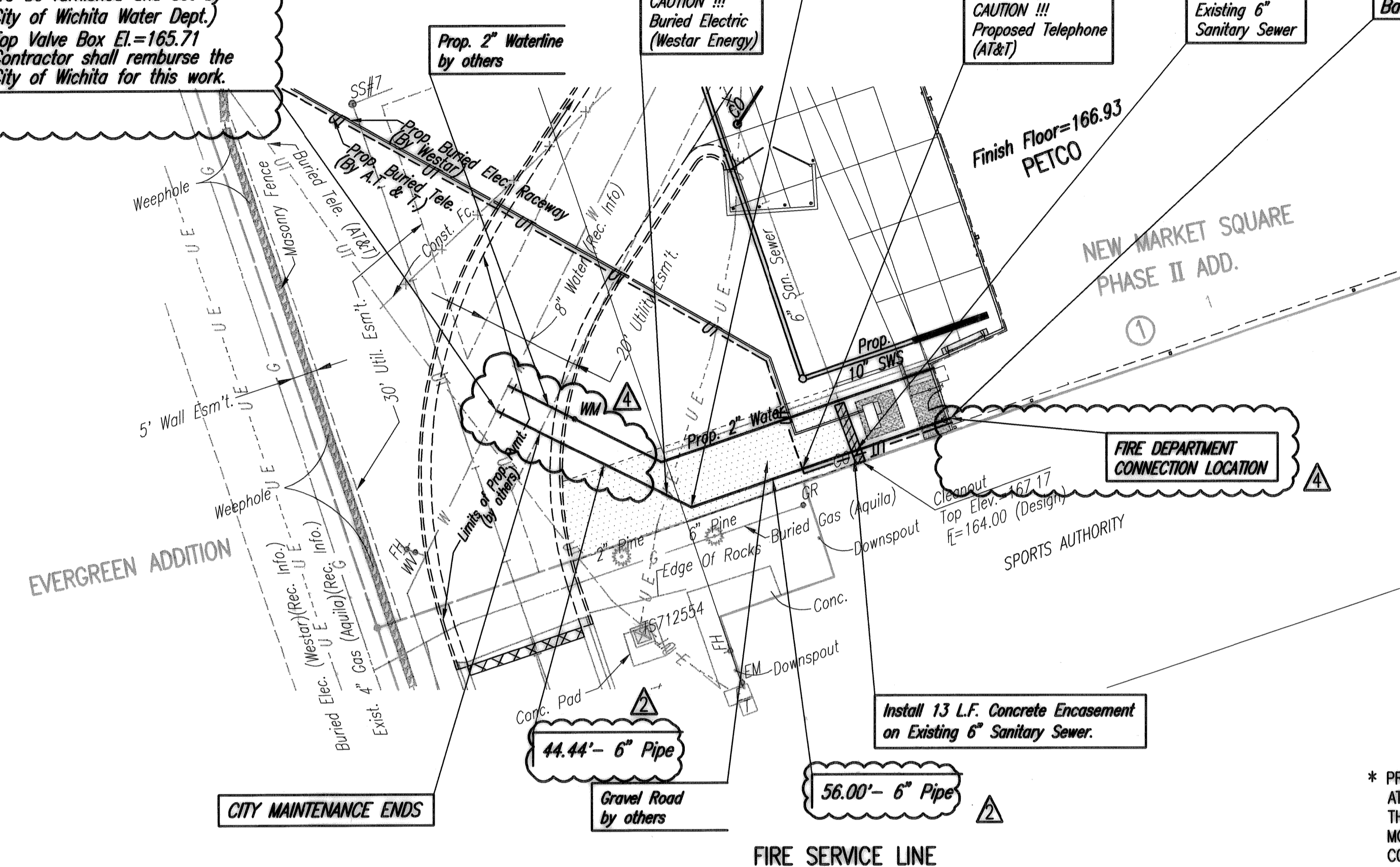
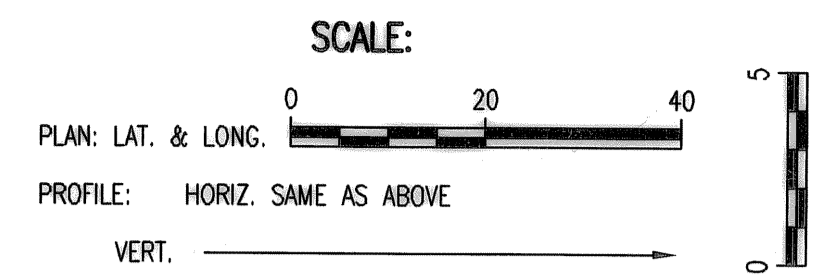
PROFILE	CHECKED	DATE
	CHECKED	

Shred 11-09-2007 11:24:14 AM by CSL
 C:\2007\07\48\001\1\FireSU2.dwg - 10/19/07 - 10/19/07

N-7,301.7773, E-3,772.9188
 WL 1, Sta. 0+00.00*
 Existing 8" Water Main
 1- 8" x 6" Tapping Sleeve
 1- 6" Tapping Valve
 1- 6" Valve Box
 (To be furnished and set by City of Wichita Water Dept.)
 Top Valve Box El.=165.71
 Contractor shall reimburse the City of Wichita for this work.

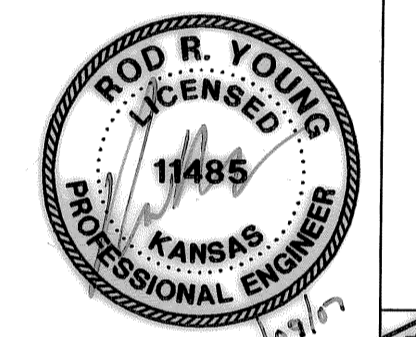
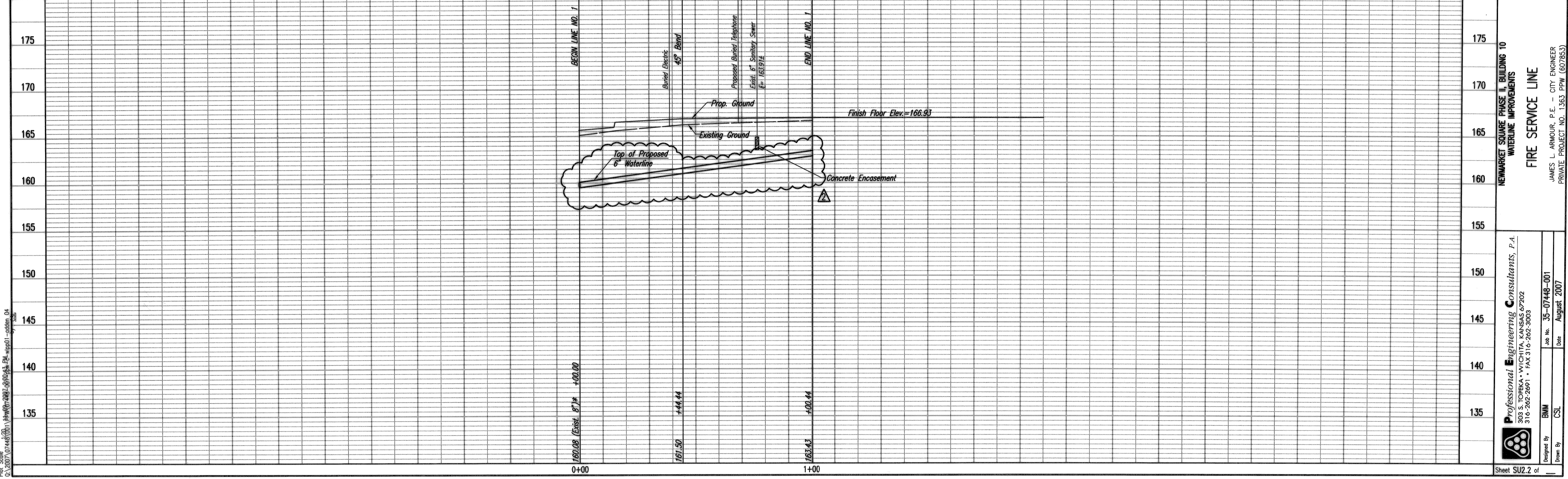
N-7,369.6058, E-3,803.5798
 WL 1, Sta. 0+44.44
 1- 6" CI CL MJ 45° Bend
 Defl.= 45° 00' 00"

N-7,268.4055, E-3,859.5669
 WL 1, Sta. 1+00.44
 See Architect Plan for Fire Line Entrance Details, Fire Service Continuation and Backflow Preventor.



* PRIOR TO BEGINNING CONSTRUCTION, THE CONTRACTOR SHALL EXCAVATE THE EXISTING 8" WATERLINE AT STATION 0+00.00 TO VERIFY PIPE SIZE, TYPE, FITTINGS, AND HORIZONTAL AND VERTICAL LOCATION. THE CONTRACTOR SHALL REPORT HIS FINDINGS TO THE ENGINEER SO THAT ANY NECESSARY PLAN MODIFICATIONS CAN BE MADE. ANY ADDITIONAL LABOR OR MATERIALS NECESSARY TO COMPLETE THE CONNECTION SHALL BE CONSIDERED SUBSIDIARY TO THE PROJECT.

Unless noted otherwise, elevations shown are top of pipe



REVISION	DATE
ADDENDUM #1	11/12/07
ADDENDUM #2	10/19/07
Revision	Date

NEW MARKET SQUARE PHASE II, BUILDING 10
 WATERLINE IMPROVEMENTS

FIRE SERVICE LINE

JAMES L. ARMOUR, P.E. - CITY ENGINEER
 PRIVATE PROJECT NO. 1363 PPW (607853)

Designed By: BMM
 Drawn By: CSL

Job No. 35-07448-001
 Date August 2007

Professional Engineering Consultants, P.A.
 303 S. TOPEKA • WICHITA, KANSAS 67202
 316-262-2891 • FAX 316-262-3003

Sheet SU2.2 of