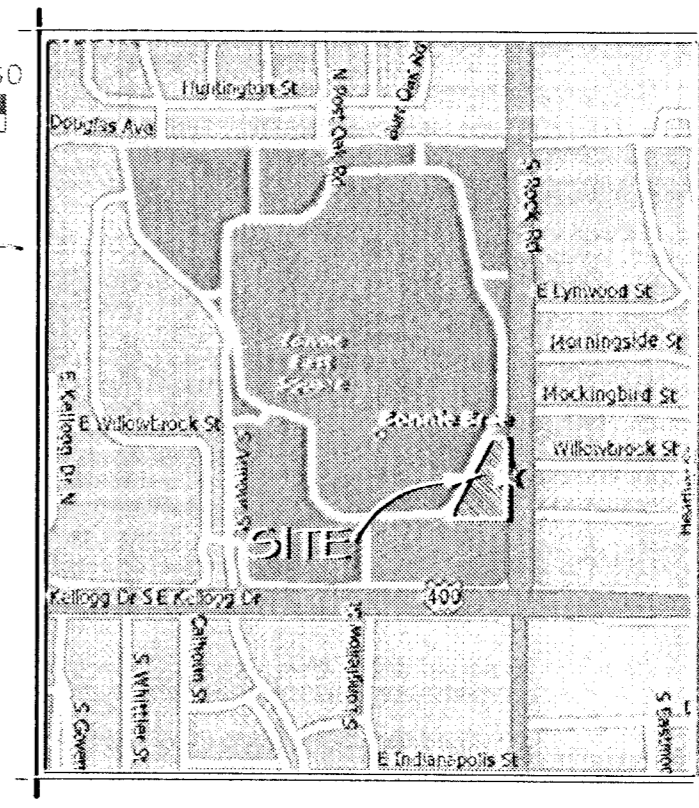
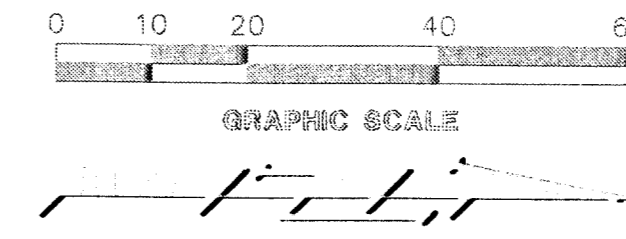


### CATCH BASIN SCHEDULE

C.B. #	MANUFACTURER'S #	MANUFACTURER	SIZE
1	R-1878-A36	NEENAH	18X18
2	R-1878-A56	NEENAH	22X22
3	R-1878-A56	NEENAH	22X22

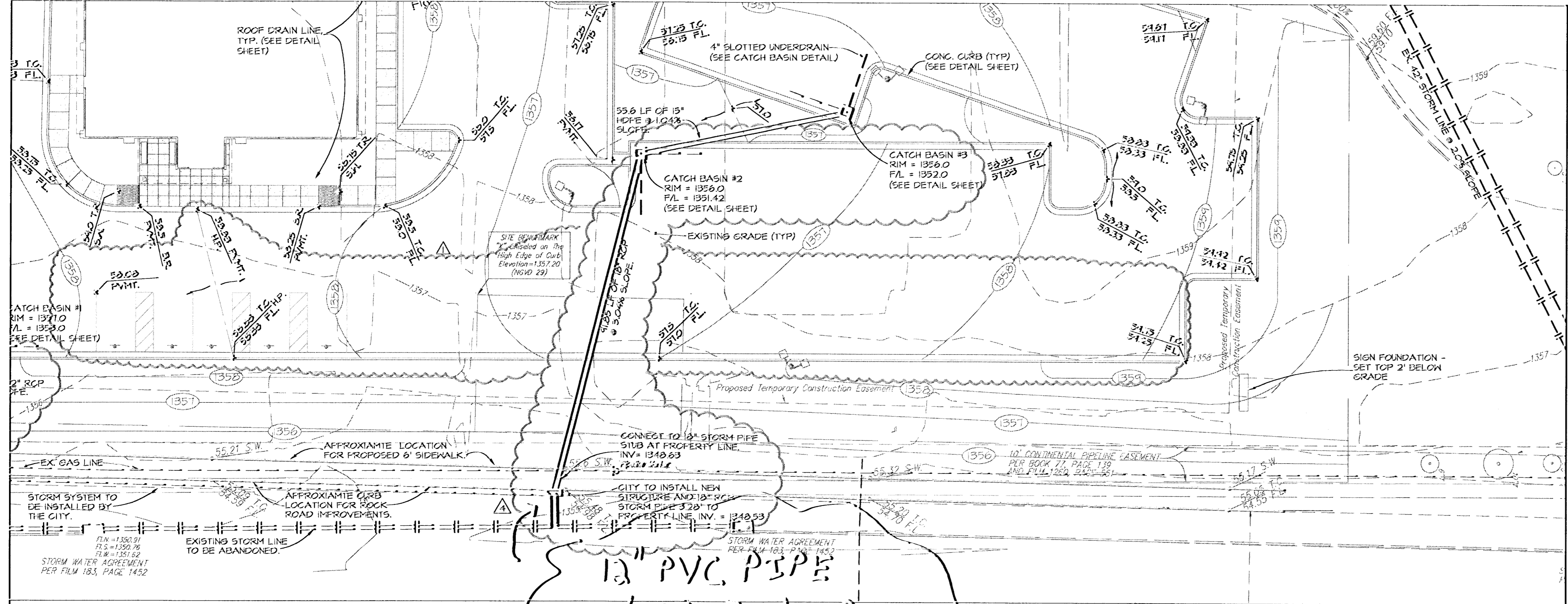
HDPE - HIGH DENSITY POLYETHYLENE PIPE;  
 HI-Q - HANCOCK COMPANY, 1-800-841-8500  
 N-12 - ADVANCED DRAINAGE SYSTEMS, 1-800-733-4964  
 NEENAH CONSTRUCTION CASTINGS, 1-800-558-5015



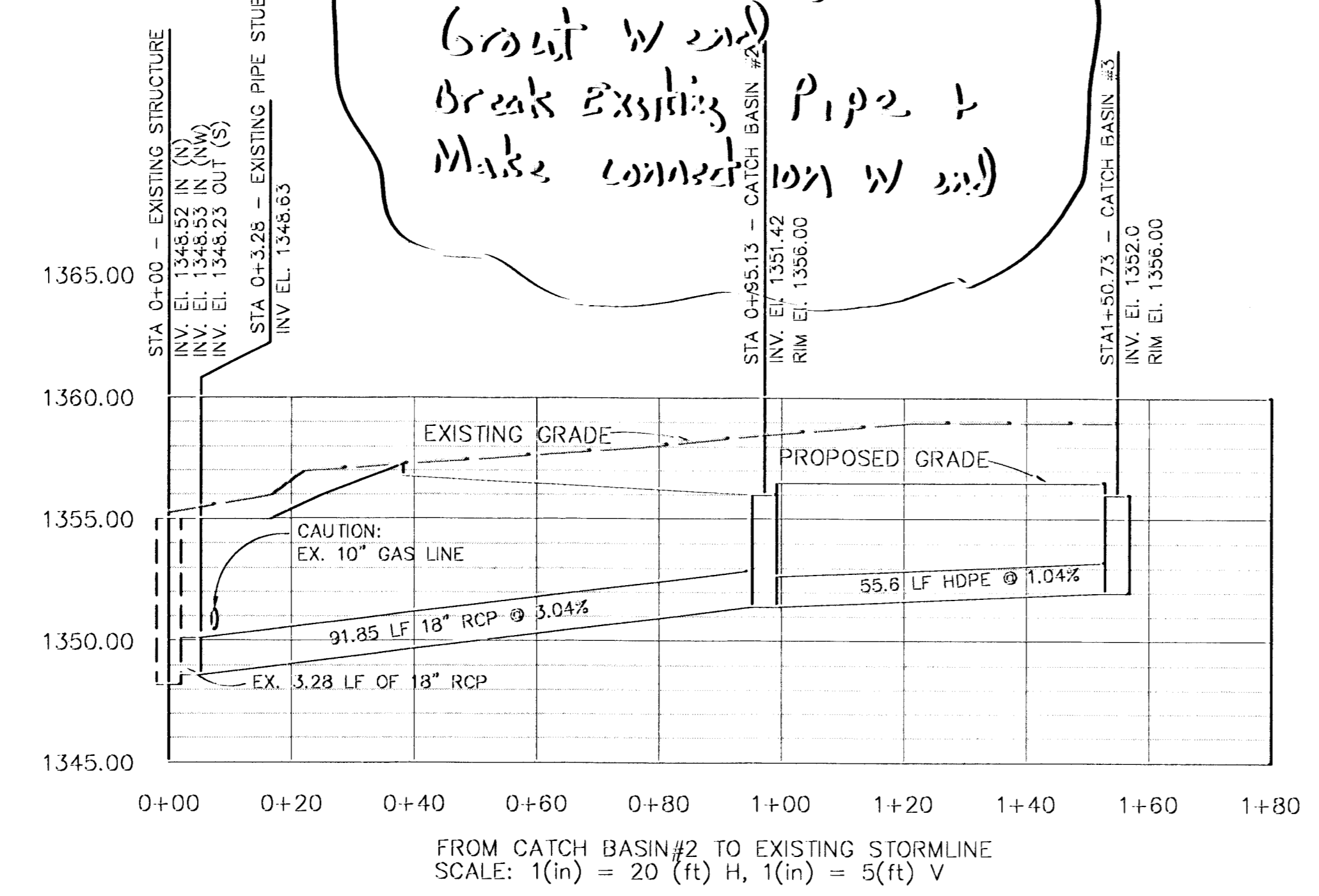
**DESIGN and ENGINEERING**

ARCHITECTS  
 STRUCTURAL AND CIVIL ENGINEERS

5105 Maryland Way, Suite 200  
 Brentwood, Tennessee 37027  
 615-370-1779 Fax: 370-9108  
 www.dandeng.com



12" PVC PIPE  
 12" 30' Existing Pipe  
 (Grout w end)  
 Break Existing Pipe &  
 Make connection w end



#### NOTES

- A. OWNER: LOSANS ROADHOUSE, INC. 3011 ARMY DRIVE NASHVILLE, TENNESSEE 37204 TELEPHONE: (615) 284-5100
  - B. EXISTING INFORMATION TAKEN FROM TOPOGRAPHIC SURVEY BY: BUSHMAN COMPANY, P.A. 315 ELLIS ST. NIGHTA, KS 67111 DATED: JULY 11, 2006
  - C. TOTAL AREA OF SITE: 1.78 ACRES
  - D. PARKING DIMENSIONS:  
 (19) PARKING SPACES FOR CARS  
 (3) HANDICAP PARKING SPACES  
 (13) TOTAL PARKING SPACES
  - E. BUILDING 1255 SQUARE FEET
  - F. THE CONTRACTOR SHALL BID AND PERFORM THE WORK IN ACCORDANCE WITH ALL LOCAL, STATE AND NATIONAL CODES AND THE REQUIREMENTS OF THE LOCAL UTILITY COMPANY.
  - G. PERSONS USING THIS DRAWING SHOULD CONTACT LOCAL UTILITY COMPANIES FOR EXACT LOCATIONS OF UNDERGROUND UTILITIES.
  - H. ALL DIMENSIONS ARE TO FACE OF CURB UNLESS OTHERWISE NOTED.
  - I. UNLESS NOTED OTHERWISE, CURB RADII 30'.
  - J. DO NOT SCALE THIS DRAWING AS IT IS A REPRODUCTION AND SUBJECT TO DISTORTION.
  - K. REMOVE ALL FOUNDATIONS, UNDERGROUND TANKS, PAVING, BASE ETC., IF REMAINING, BEFORE BEGINNING CONSTRUCTION.
  - L. FILL ALL PLANTERS/ISLANDS TO TOP OF CONCRETE CURB WITH TOPSOIL. TOPSOIL TO BE CLEAN AND FREE OF DEBRIS, ETC.
  - M. THESE PLANS, PREPARED BY DESIGN AND ENGINEERING, DO NOT EXTEND TO OR INCLUDE SYSTEMS PERTAINING TO THE SAFETY OF THE CONSTRUCTION CONTRACTOR OR HIS EMPLOYEES, AGENTS OR REPRESENTATIVES IN THE PERFORMANCE OF THE WORK. THE SEAL OF DESIGN AND ENGINEERING'S REGISTERED PROFESSIONAL ENGINEER HEREON DOES NOT EXTEND TO ANY SUCH SAFETY SYSTEMS THAT MAY NOW OR HEREAFTER BE INCORPORATED INTO THESE PLANS. THE CONSTRUCTION CONTRACTOR SHALL PREPARE OR OBTAIN THE APPROPRIATE SAFETY SYSTEMS WHICH MAY BE REQUIRED BY U.S. OCCUPATIONAL SAFETY AND HEALTH ADMINISTRATION (OSHA) AND/OR LOCAL REGULATIONS.
  - N. IN THE CASE OF CONFLICT BETWEEN THIS DRAWING AND ANY OTHER DRAWING AND/OR THE SPECIFICATIONS, THE ENGINEER SHALL BE IMMEDIATELY NOTIFIED FOR CLARIFICATION.
  - O. THE GEOTECHNICAL REPORT, PREPARED BY OTHERS, IS INCORPORATED BY REFERENCE AND MADE A PART OF THE CONTRACT DOCUMENTS. IT IS INTENDED THAT THE RECOMMENDATIONS IN THE GEOTECHNICAL REPORT BE FOLLOWED. IN THE EVENT OF CONFLICT BETWEEN THE DRAWINGS AND THE GEOTECHNICAL REPORT, MAKE NO ASSUMPTIONS. THE ENGINEER SHALL BE IMMEDIATELY NOTIFIED FOR CLARIFICATION BEFORE ANY WORK IS BEGUN.
  - P. THE GENERAL CONTRACTOR SHALL PROTECT ALL GRADED SURFACES ON AND OFF SITE, UNTIL SUCH TIME AS THE FINISH SURFACES ARE APPLIED.
- GRADING NOTES:**
- A. GRADE ALL LANDSCAPE AREAS TO DRAIN. NO PONDING WILL BE ALLOWED.
  - B. STRIP ALL TOPSOIL AND OTHER DELIBERIOUS MATERIALS AS PER SOIL CONSULTANTS, GEOTECHNICAL REPORT, TO ACCOMPLISH GRADING AS INDICATED ON THE PLANS. STOCKPILE TOPSOIL IN AREAS DESIGNATED BY THE OWNER FOR REUSE IN LANDSCAPED AREAS.
  - C. AFTER DEMOLITION IS COMPLETE, PROOF-ROLL THE EXPOSED SUBGRADE TO DETECT ANY LOOSE, OR SOFT AREAS. ANY YIELDING MATERIAL SHOULD BE UNDERCUT AND RECOMPACTED AS NOTED BELOW.
  - D. FILL MATERIAL SHALL MEET THE FOLLOWING REQUIREMENTS:  
 LIQUID LIMIT - LESS THAN 40  
 PLASTICITY INDEX BETWEEN 10 AND 20  
 PARTICLE SIZE 4" MAXIMUM  
 MAXIMUM GRAVEL CONTENT - 30% RETAINED ON 3/4" SIEVE  
 MAXIMUM ALLOWABLE ORGANIC CONTENT - 3% BY WEIGHT (NO LARGE ROOTS)  
 PROVIDE THE OWNER WITH TEST RESULTS OF OFF-SITE BORROW MATERIAL FOR APPROVAL PRIOR TO BRINGING SUCH MATERIAL ON-SITE.
  - E. COMPACT ALL FILL TO A MINIMUM OF 98% OF THE MAXIMUM STANDARD PROCTOR DRY DENSITY. THE MOISTURE CONTENT AT TIME OF CORPACTION SHALL BE WITHIN 12% OF THE OPTIMUM MOISTURE. MAXIMUM LOOSE LIFT THICKNESS SHALL BE 8 INCHES WITH DENSITY TESTING - 1 PER 2500 TO 5000 FOR EACH LIFT. (ACTUAL FREQUENCY PER ON-SITE GEOTECHNICAL ENGINEER)
  - F. SEE LANDSCAPE PLANS FOR TREES AND SHRUBS TO REMAIN.

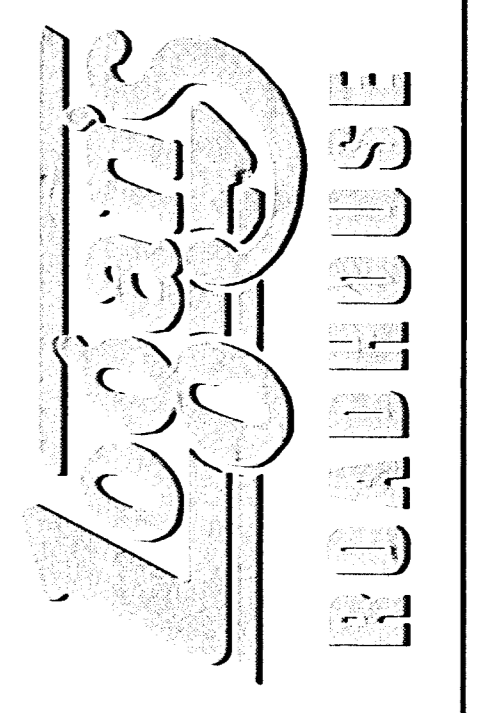
AS BUILT PLANS

8/27/2007

Gary



3011 Army Dr., Suite 800  
 Nashville, Tennessee 37204  
 Phone: (615) 284-5100



Location: ROCK ROAD NIGHTA, KANSAS (EAST)

Job Number: 40-0484/100  
 Revision:

- ▲ 1000'S PER CITY OF NIGHTA
- ▲ 1000'S PER CITY OF NIGHTA
- ▲ 1000'S PER CITY OF NIGHTA

3/4

STORM PROFILES  
 DATE: 8-29-2007  
 PROJECT:

These design documents are the exclusive property of Design and Engineering, P.C. The information shown may not be used or reproduced without the written permission of Design and Engineering, P.C.