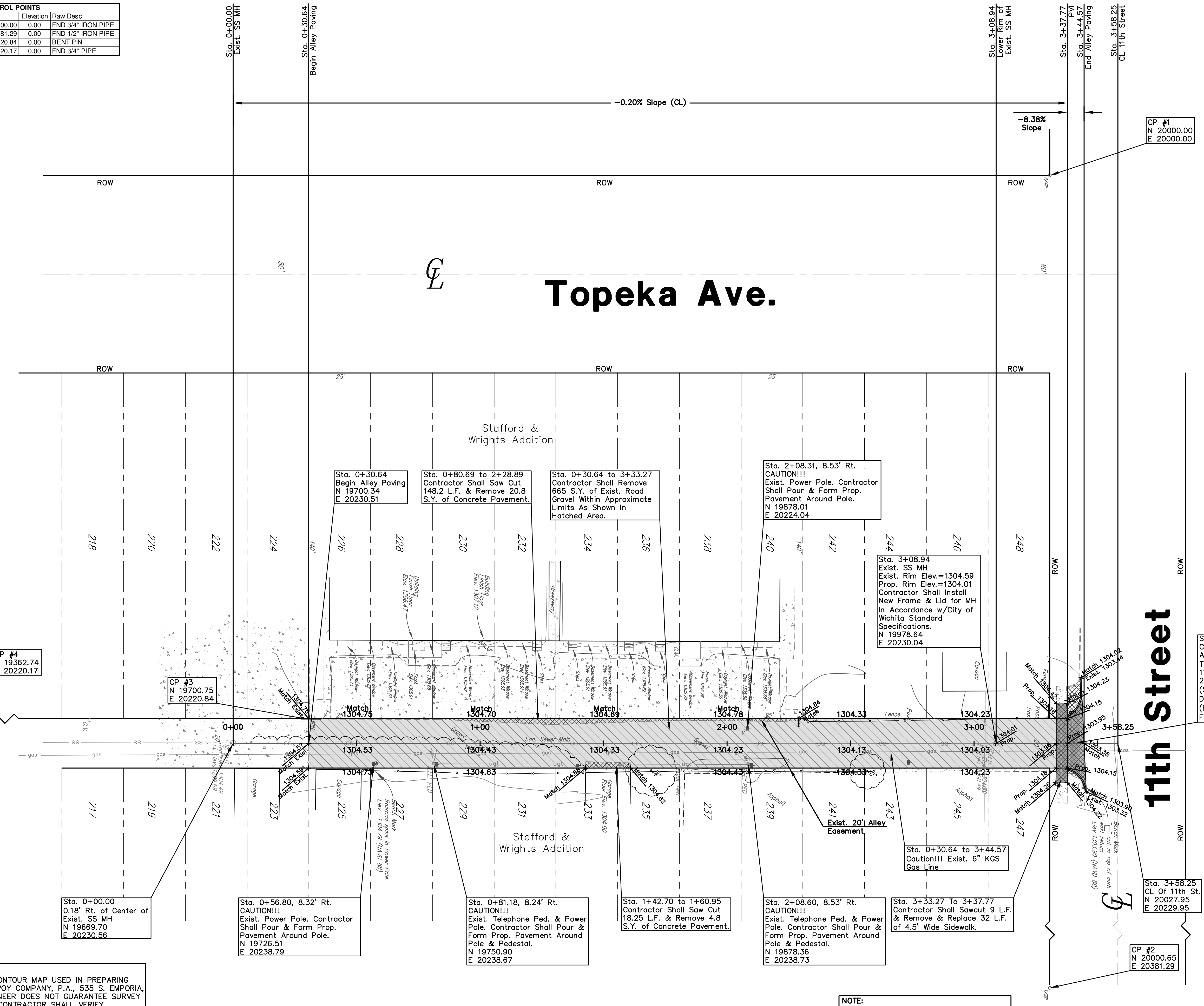
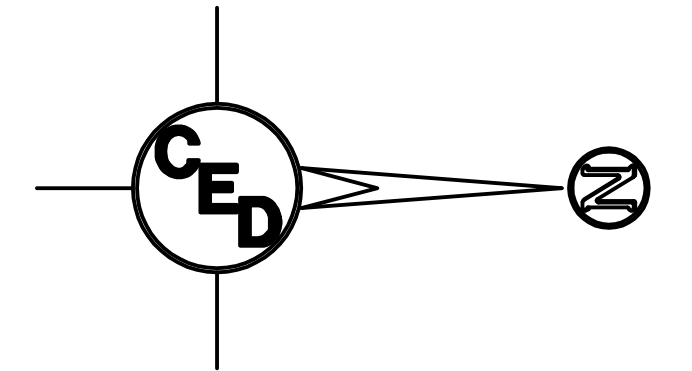


CONTROL POINTS			
Number	Northing	Easting	Raw Desc
1	20000.00	20000.00	FND 3/4" IRON PIPE
2	20000.65	20381.29	FND 1/2" IRON PIPE
3	19700.75	20220.84	BENT PIN
4	19362.74	20220.17	FND 3/4" PIPE



UTILITY LEGEND	
	= Fire Hydrant
	= Water Meter
	= Water Valve
	= Gas Meter
	= Gas Valve
	= Telephone Riser
	= Mailbox
	= Flag Pole
	= SS Manhole
	= SWS Manhole
	= Sign
	= Misc. Post
	= Guy Anchor
	= Power Pole
	= Light Pole
	= Deciduous Tree or Shrub
	= Existing Fence
	= Right of Way Line
	= Underground Telephone
	= Underground Electric
	= Overhead Electric
	= Water Line
	= Sanitary Sewer
	= Gas Line
	= Cable TV or Fiber Optic

- Proposed 5" A.C. Pavement on 5" Crushed Rock Base
- Proposed Concrete Curb & Gutter
- Exist. Road Gravel To Be Removed
- Propose Concrete Removal

Sta. 3+37.77 To 3+44.57
Contractor Shall Sawcut 47 L.F. Along FL of Exist. Alley Approach To End's of Exist. Radius Along 11th Street & Remove & Replace 21.43 S.Y. of Concrete Approach. (See Reinforced Conc. Alley Paving Detail Sheet No. 2.) (Radius's For Approach Are 10' From Behind Exist. Curb.)

- Bench Marks:
- #1 "D" cut in top of curb east return Elev. 1303.90 (NAVD 88)
 - #2 Railroad spike in Power Pole Elev. 1304.79 (NAVD 88)

UTILITIES SHOWN REPRESENT THE BEST INFORMATION AVAILABLE FOR DESIGN. ADDITIONAL UTILITIES MAY BE PRESENT ON THIS PROJECT. THE CONTRACTOR SHALL BE RESPONSIBLE FOR DETERMINING THE EXACT LOCATION, DEPTH AND SIZE OF ALL UNDERGROUND UTILITIES PRIOR TO CONSTRUCTION. THE CONTRACTOR SHALL BE LIABLE FOR ANY DAMAGE CAUSED BY THE FAILURE TO DO SO.

BETWEEN TOPEKA & EMPORIA AVE, S. OF 11TH ST.
ALLEY PAVING PLAN
 WICHITA, SEDGWICK COUNTY, KANSAS
 CED PROJ. NO.: 20071621
CERTIFIED ENGINEERING DESIGN, P.A.
 810 WEST DOUGLAS, SUITE C
 WICHITA, KANSAS 67203
 PH.(316)262-8808 FAX.(316)262-1669

DESIGNED: HDF	SCALE: 1"=20'	SHEET 3
DRAWN: JDT	DATE: 11-07	
CHECKED: HDF	CED FILE: MullenCtAlley-Base	TOTAL 5

SURVEY DISCLAIMER:
 TOPOGRAPHIC SURVEY AND CONTOUR MAP USED IN PREPARING PLANS WAS PROVIDED BY SAVOY COMPANY, P.A., 535 S. EMPORIA, SUITE 104, WICHITA, KS. ENGINEER DOES NOT GUARANTEE SURVEY ELEVATIONS FOR ACCURACY. CONTRACTOR SHALL VERIFY ELEVATIONS AND NOTIFY ENGINEER OF ANY DISCREPANCIES.

NOTE:
 Quantities Are Listed For Information Only.