

SCALE:
1" = 20' HORIZONTAL
1" = 5' VERTICAL

CAUTION! VERIFY
1.25" Water Line. Location Per Plan. Depth Unknown. Contractor To Expose Line Prior To Construction. If Conflict Exists, Call Lee Ullum Of Baughman Co. (262-7271)

Sta. 0+00.0, Begin Line 1. Construct 2'x4" Drop Inlet Over Existing 24"x30" HERCP. Extend 15" RCP Northeast. Top = 1291.54. Install Sediment Barrier.

CAUTION!
Remove Approximately 143 L.F. 18" RCP. Sand Backfill, Flush & Vibrate. See Note #5. Seal Hole In Manhole.

CAUTION!
18" RCP Crossings. To Be Removed. See Note #5.

CAUTION!
Irrigation Valve With Water Line Near. Location Unknown.

Sta. 0+37.2, Line 1. Construct 3'x5" Type "1" Curb Inlet. Top = 1290.80. Install Sediment Barrier.

Caution! Verify Gas Service Line. Exact Depth & Location Unknown. Expose Pipe Prior To Construction. If Conflict Exists, Contact Lee Ullum Of Baughman Co. (262-7271)

Sta. 1+00.2, Line 1. Construct 3'x5" Type "1" Curb Inlet. Top = 1291.00. Install Sediment Barrier.

CAUTION!
Remove 2 Drop Inlets & Approximately 19 L.F. of 15" RCP. Sand Backfill, Flush & Vibrate. See Note #5.

CAUTION!
Water Vault, Water Line & Drain Line To Be Relocated By Others. Coordinate With Other Contractor For Drain Line Location.

CAUTION!
Remove Approximately 61 L.F. 12" RCP. Sand Backfill, Flush & Vibrate. See Note #5.

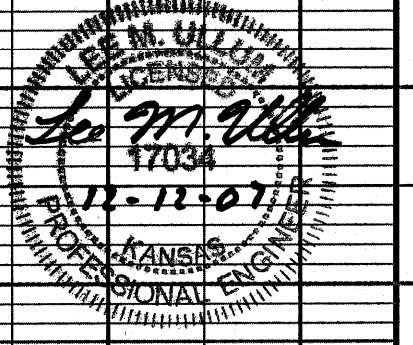
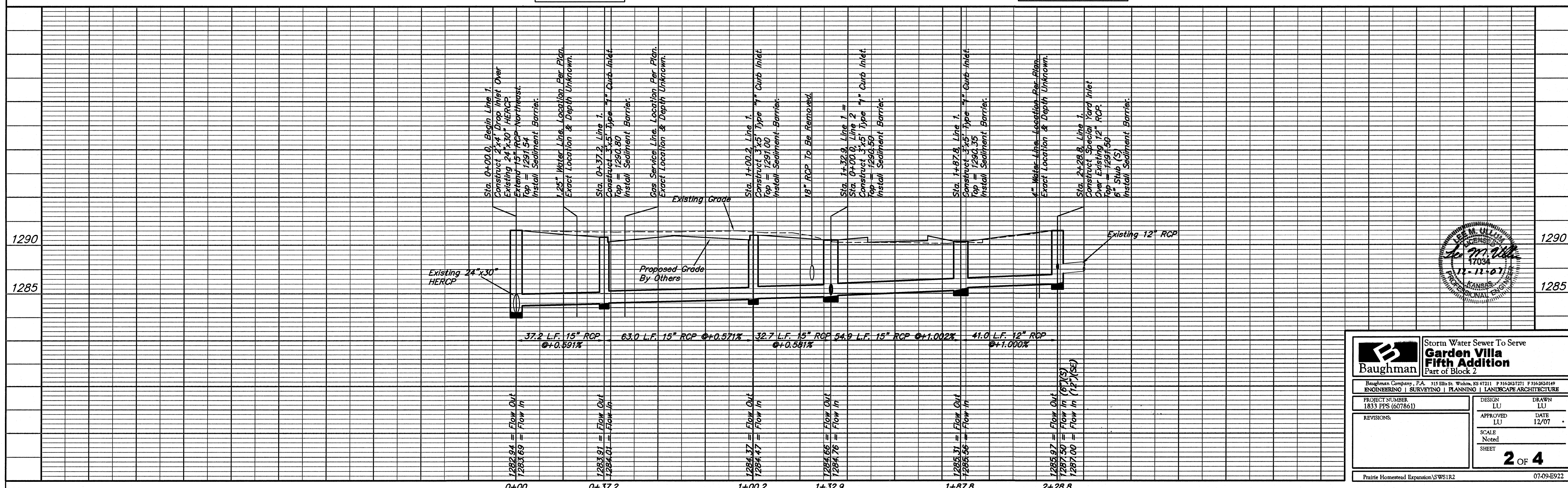
Sta. 2+28.8, Line 1. Construct Special Yard Inlet Over Existing 12" RCP. Top = 1291.50. 6" Stub (S). Install Sediment Barrier.

Relocated Water Vault w/6" Drain Line From Vault To Inlet. Exact Location Of Vault & Water Line To Be Determined In Field.

Contractor To Use Extreme Caution When Excavating Near Utility Lines. Contractor To Hand Dig To Expose All Utility Lines Prior To Construction. Verify Depth To Determine Conflict If Any.

Contractor Shall Follow All Applicable Best Management Practices (BMP) For Erosion Control.

BENCHMARK
"X" Chiseled on Top of Sidewalk at NW Property Corner. Elev. = 1290.96 NGVD 29



Baughman		Storm Water Sewer To Serve Garden Villa Fifth Addition Part of Block 2	
Baughman Company, P.A. 315 Ellis St. Waukegan, IL 60087 P 815-262-7271 F 815-262-0149 ENGINEERING SURVEYING PLANNING LANDSCAPE ARCHITECTURE			
PROJECT NUMBER 1833 PPS (607861)	DESIGN LU	DRAWN LU	DATE 12/07
REVISIONS:	APPROVED LU	SCALE Noted	SHEET 2 OF 4
Prairie Homestead Expansion/SWS1R2		07.09.E922	