

SCALE:
 1" = 20' HORIZONTAL
 1" = 5' VERTICAL

Contractor Shall Follow All Applicable Best Management Practices (BMP) For Erosion Control.

Contractor To Use Extreme Caution When Excavating Near Utility Lines. Contractor To Hand Dig To Expose All Utility Lines Prior To Construction. Verify Depth To Determine Conflict If Any.

BENCHMARK

"X" Chiseled on Top of Sidewalk at NW Property Corner.
 Elev. = 1290.96 NGVD 29

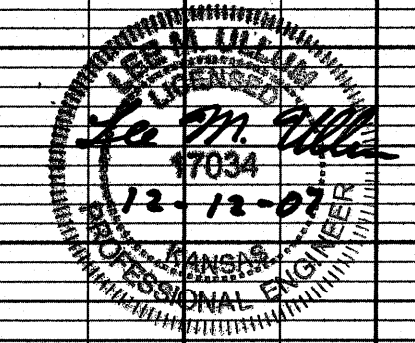
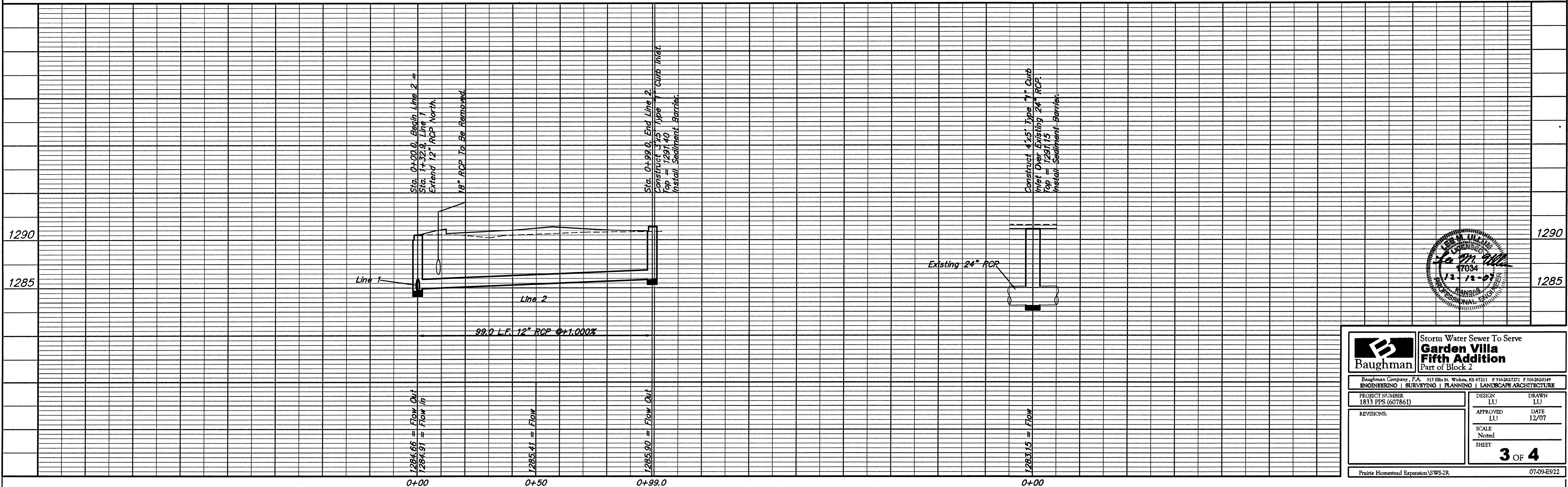
Construct 4'x5' Type "1" Curb Inlet Over Existing 24" RCP. Top = 1291.15. Install Sediment Barrier.

CAUTION! VERIFY Gas Service Line. Exact Location & Depth Unknown.

CAUTION! 18" RCP Crossing To Be Removed. See Note #5.

Sta. 0+99.0, End Line 2. Construct 3'x5' Type "1" Curb Inlet. Top = 1291.40. Install Sediment Barrier.

Sta. 0+00.0, Begin Line 2 = Sta. 1+32.9, Line 1. Extend 12" RCP North.



		Storm Water Sewer To Serve Garden Villa Fifth Addition Part of Block 2	
<small>Baughman Company, P.A. 315 Ellis St. Waukesha, WI 53181 P 316-262-7271 F 316-262-0149 ENGINEERING SURVEYING PLANNING LANDSCAPE ARCHITECTURE</small>			
PROJECT NUMBER 1833 PFS (607861)	DESIGN LU	DRAWN LU	DATE 12/07
REVISIONS:	APPROVED LU	SCALE Noted	SHEET 3 OF 4
<small>Prairie Homestead Expansion/SWS-2R</small>			<small>07-09-E922</small>