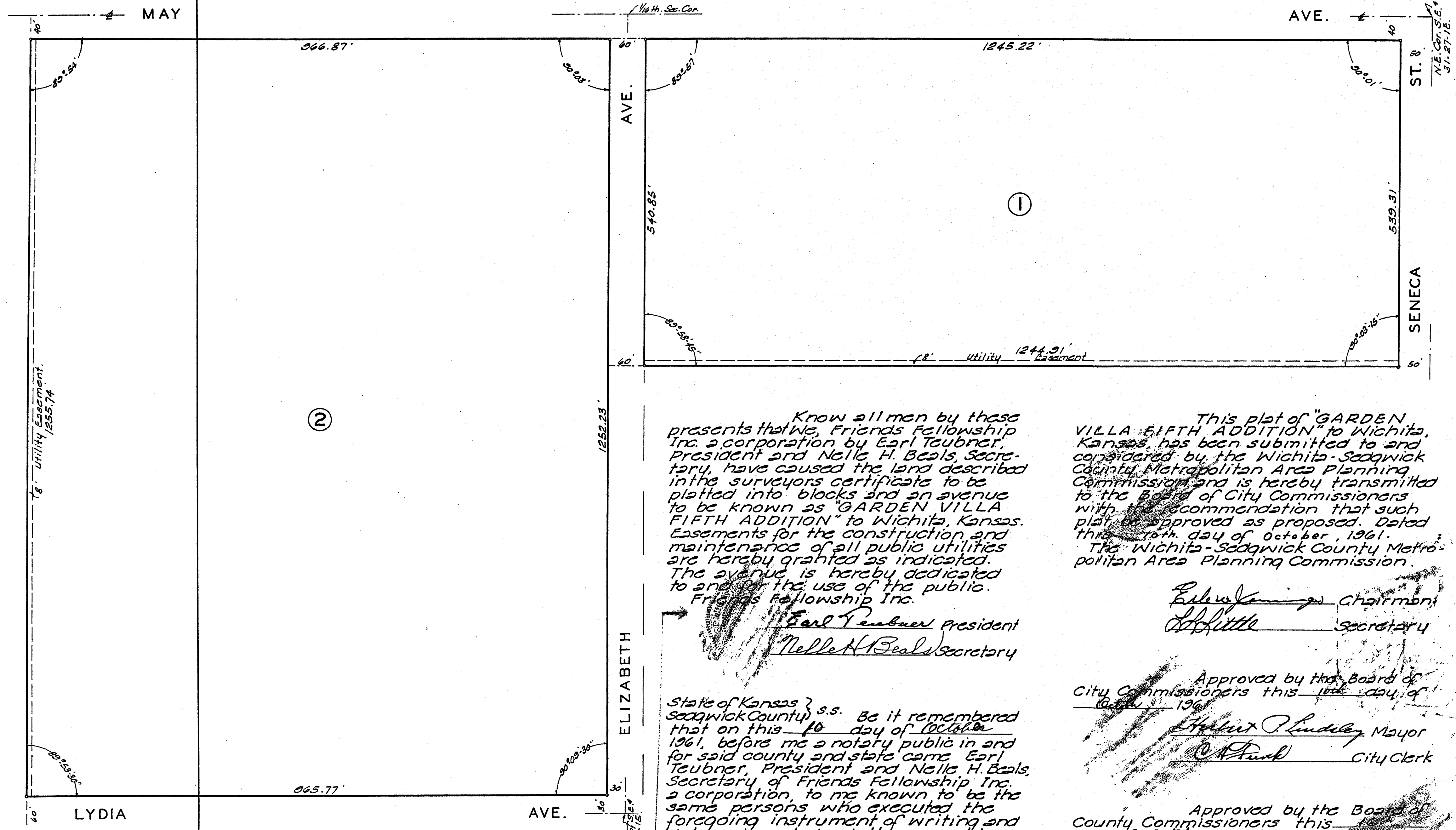


GARDEN VILLA FIFTH ADDITION

TO WICHITA KANSAS



Know all men by these presents that we, Friends Fellowship Inc. a corporation by Earl Teubner, President and Nelle H. Beals, Secretary, have caused the land described in the surveyors certificate to be platted into blocks and an avenue to be known as "GARDEN VILLA FIFTH ADDITION" to Wichita, Kansas. Easements for the construction and maintenance of all public utilities are hereby granted as indicated. The avenue is hereby dedicated to and for the use of the public.

This plat of "GARDEN VILLA FIFTH ADDITION" to Wichita, Kansas, has been submitted to and considered by the Wichita-Sedgwick County Metropolitan Area Planning Commission and is hereby transmitted to the Board of City Commissioners with the recommendation that such plat be approved as proposed. Dated this 16th day of October, 1961.

Friends Fellowship Inc.
 Earl Teubner President
 Nelle H. Beals Secretary

Approved by the Board of City Commissioners this 16th day of October, 1961.
 Robert Lindley Mayor
 City Clerk

State of Kansas } s.s. Be it remembered that on this 16th day of October, 1961, before me a notary public in and for said county and state came Earl Teubner, President and Nelle H. Beals, Secretary of Friends Fellowship Inc. a corporation, to me known to be the same persons who executed the foregoing instrument of writing and duly acknowledged the execution of the same as their voluntary act and deed and as the act and deed of said corporation.

Approved by the Board of County Commissioners this 16th day of October, 1961.
 H. O. Williams County Clerk

Luis A. Casado Notary Public
 My Commission Expires February 16, 1965

Entered on transfer record this 16th day of October, 1961.

State of Kansas } s.s. This is to certify that this plat was filed for record in the office of the Register of Deeds this 16th day of October, 1961, at 3:00 o'clock P. M. and is duly recorded.

I, Clyde M. Baughman, Surveyor in aforesaid county and state do hereby that I have surveyed and platted "GARDEN VILLA FIFTH ADDITION" to Wichita, Kansas and that the accompanying plat is a true and correct exhibit of the property surveyed described as follows: The N.W. 1/4 of the S.E. 1/4 of Sec. 31 - Twp. 27-S. R. 1-E, except the West 10 acres thereof and except the North 40 feet thereof, the South 30 feet thereof and the East 30 feet of the South 741.82 feet thereof, the last three exceptions being deeded for streets. Also the North one-half of the N.E. 1/4 of S.E. 1/4 31, Twp. 27-S. R. 1-E, except the South 80.17 feet thereof and except the North 40 feet thereof and the East 50 feet thereof, the last two exceptions being deeded for streets.

Clyde M. Baughman Surveyor



Restr. Covenant M 557 P 383

BI 4 13