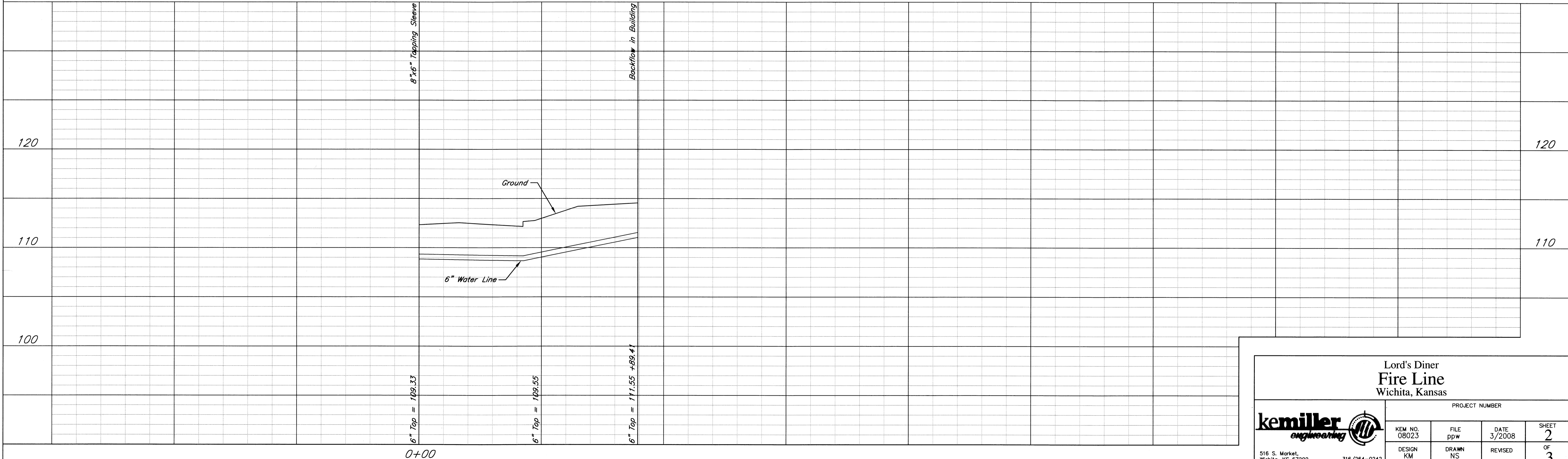
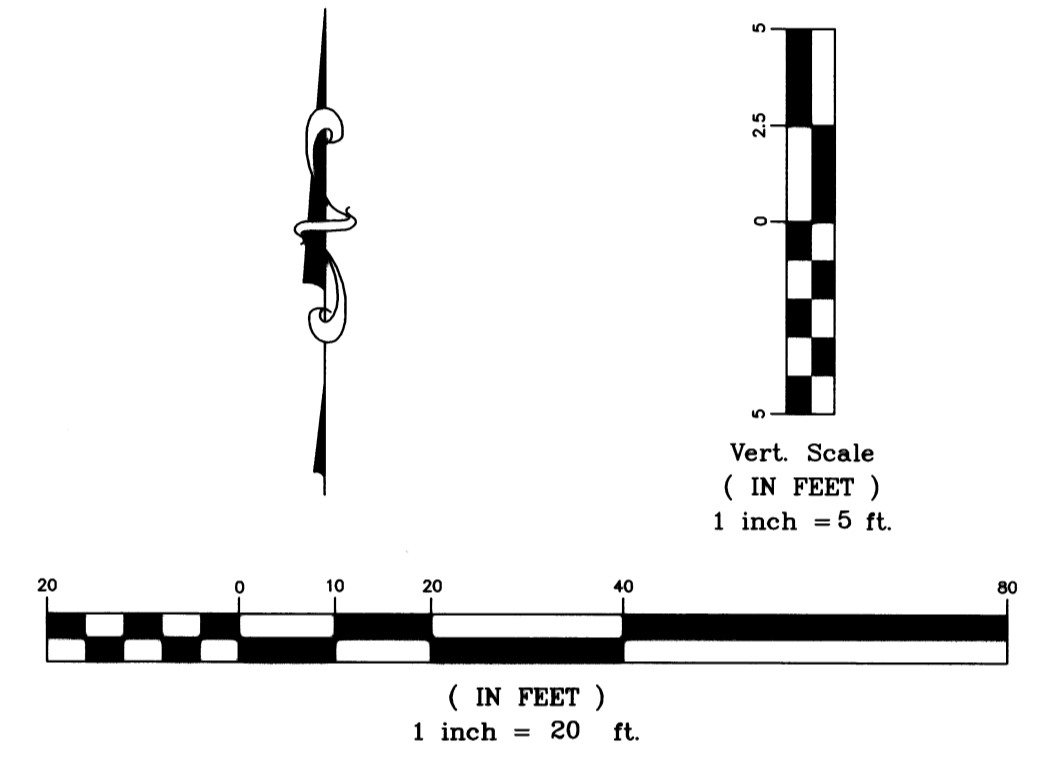


WL Sta. 00+00.00 Line 1  
 BL Sta. 13+05.71 11.41 Lt  
 \*1- 6"x6" Tapping Sleeve  
 \*1- 6" Tapping Valve  
 \*1- 6" Valve Box  
 Valve Box Elev. = 112.33±  
 (Match Exist)  
 \* To be Installed by COW  
 \* To be Paid by Contractor

WL Sta. 00+89.41 Line 1  
 BL Sta. 13+05.71 78.00 Rt  
 Backflow in Building

SS MH  
 Top=113.66  
 ?=108.51  
 (Plugged-N)

Remove and Replace  
 Existing Pavement,  
 Curb and Gutter  
 as needed.



<b>Lord's Diner          Fire Line          Wichita, Kansas</b>			
PROJECT NUMBER			
	KEM NO. 08023	FILE ppw	DATE 3/2008
	DESIGN KM	DRAWN NS	REVISED
			SHEET <b>2</b> OF <b>3</b>
<small>516 S. Market,          Wichita, KS 67202</small>		<small>316/264-0242</small>	