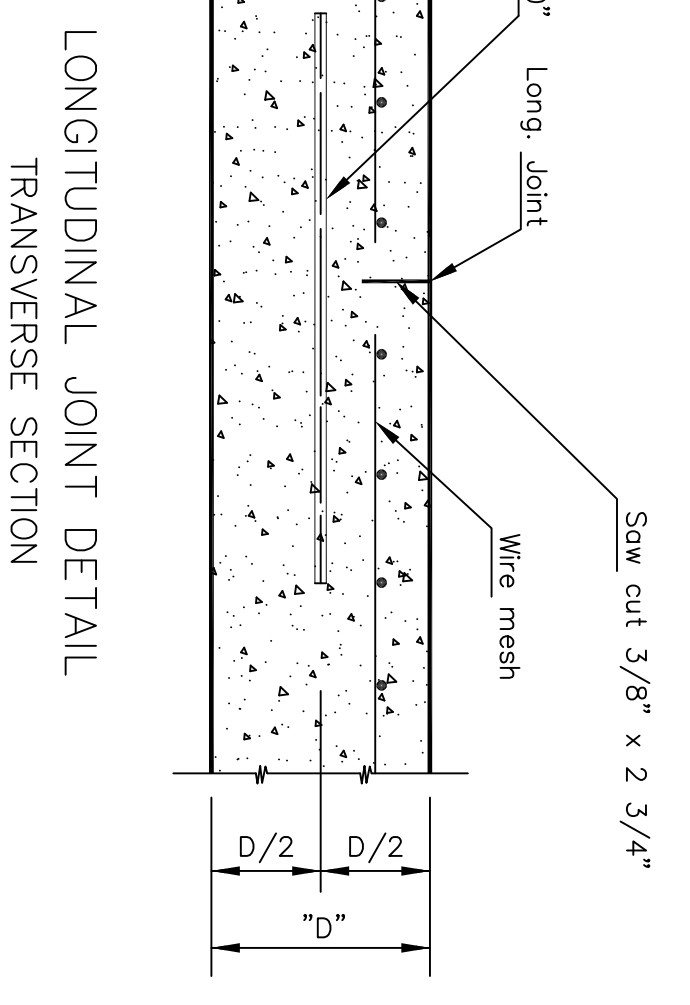


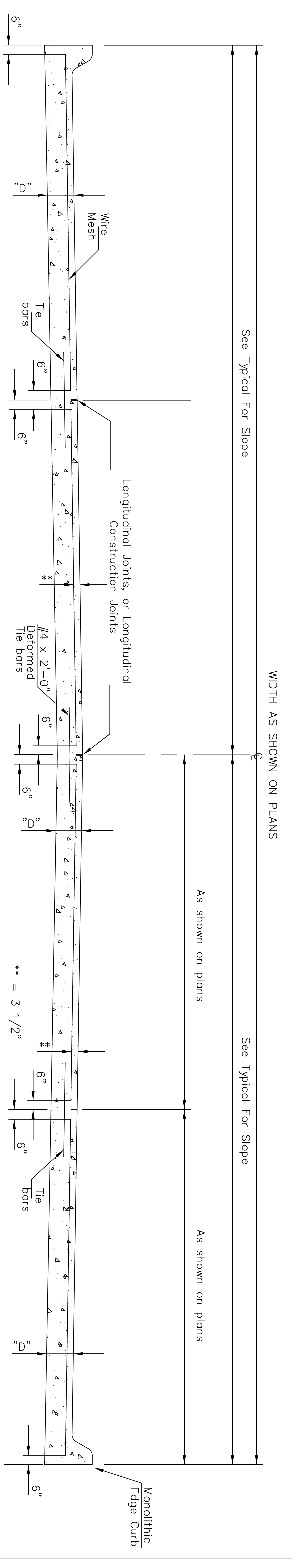
DETAIL OF LAP FOR WIRE MESH

NOTE: The lap shall extend beyond the first transverse wire of each sheet.  
The sheets shall be wired securely at the edges and at intervals not to exceed 2'-6" for the full width of the sheet. Approx. weight of wire mesh = 44 lbs. per 100 sq. ft.  
Other methods for fastening the sheets of wire mesh at the laps may be used with the approval of the Engineer.

NOTE: CONTRACTION JOINTS AND EXPANSION JOINTS SHALL BE FORMED IN THE MONOLITHIC CURB AT ALL LOCATIONS WHERE SUCH JOINTS ARE PLACED IN THE PAVEMENT. ADDITIONAL CONTRACTION JOINTS SHALL BE CUT IN THE MONOLITHIC CURB IN UNIFORM LENGTHS NOT EXCEEDING TEN FOOT INTERVALS BETWEEN THOSE JOINTS WHICH COINCIDE WITH JOINTS IN THE PAVEMENT.

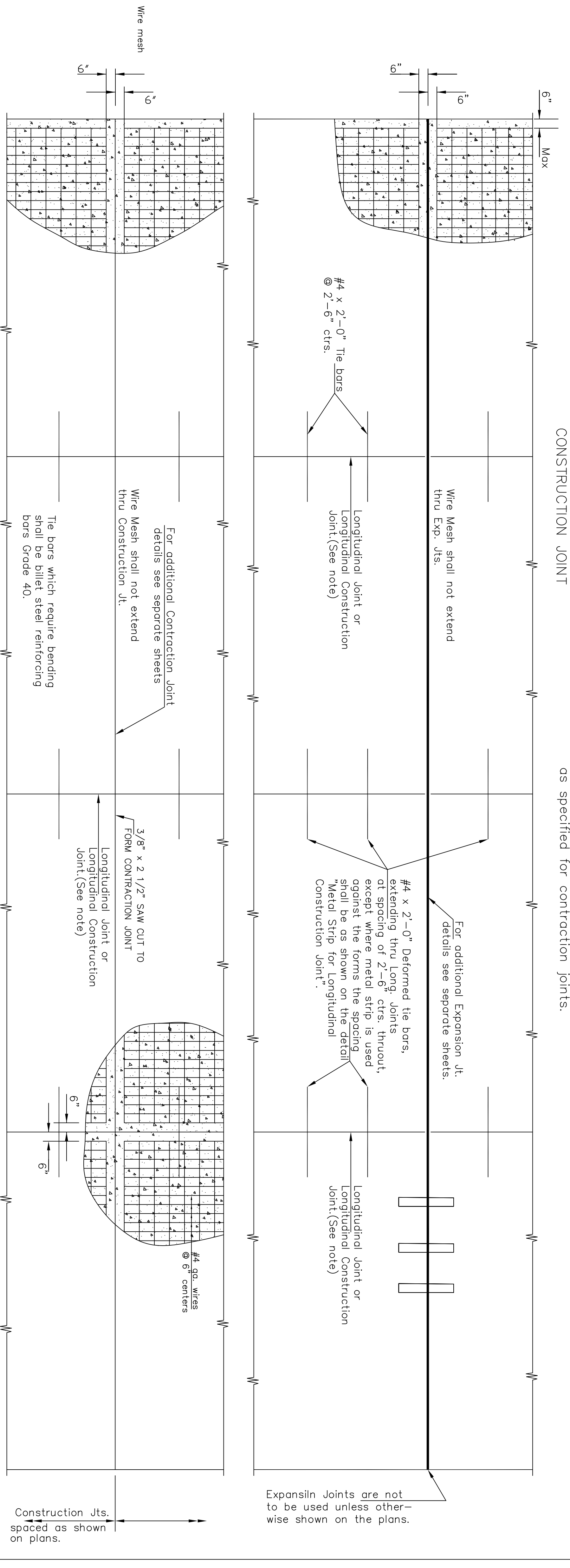


NOTE: Longitudinal joint formed by sawing 2 3/4" deep and 3/8" wide and filled as specified in standard specifications.

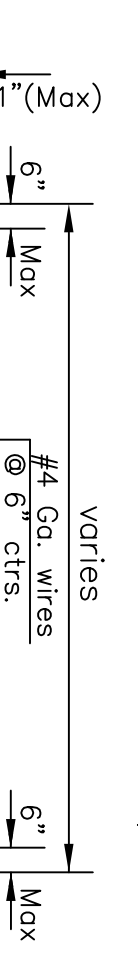


Note: A Construction Joint is required when the pour has been interrupted for a substantial length of time or at the end of a day's pour. Transverse Construction Joints shall be sawed and filled as specified for contraction joints.

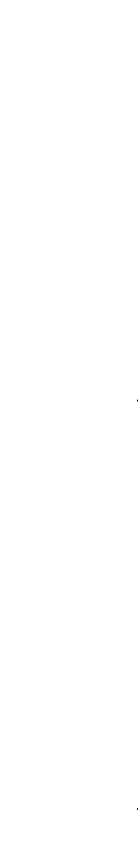
\*\* Note: The 3 1/2" as shown on standard sheet is a nominal dimension and may be subject to placement operations.



Expansion Joints are not to be used unless otherwise shown on the plans.



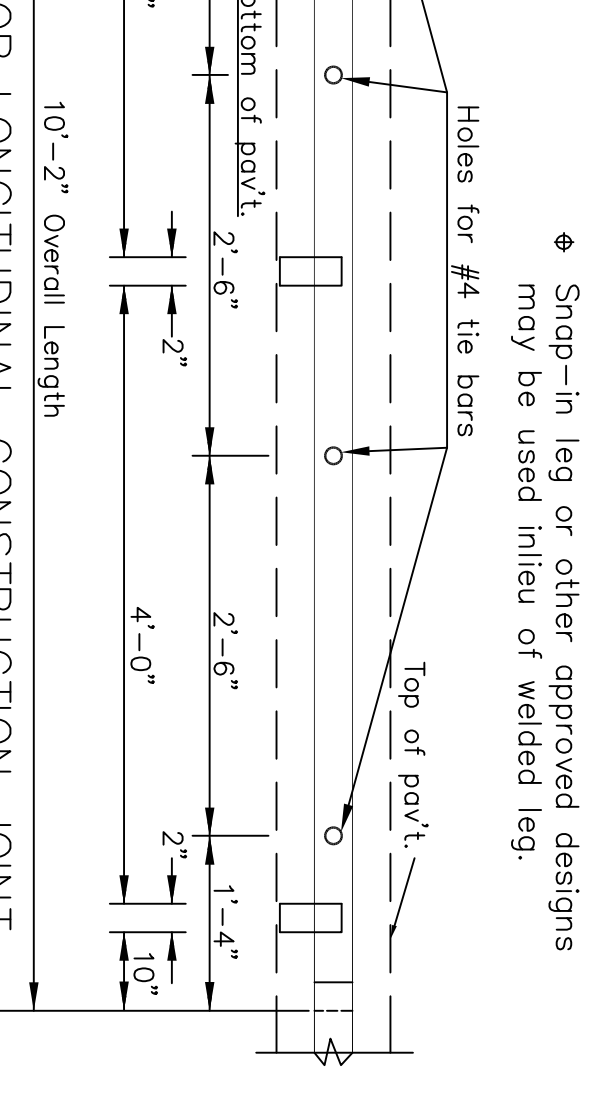
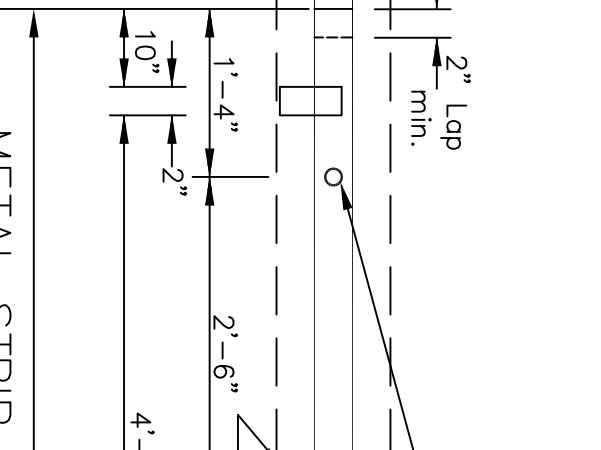
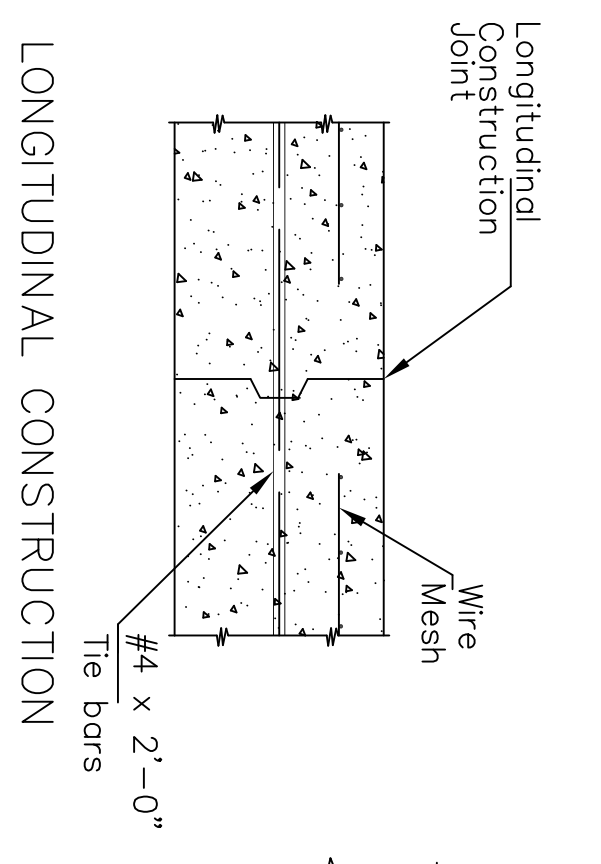
TYPICAL SHEET OF WELDED WIRE MESH (See note)



LONGITUDINAL CONSTRUCTION JOINT DETAIL TRANSVERSE SECTION



SECTION OF RECESSED FORM LEG



SECTION OF RECESSED FORM LEG

		<b>CONCRETE PAVEMENT DETAILS</b>	
		JIM ARMOUR P.E. - CITY ENGINEER	
PROJECT NUMBER 472-83755	INDR CODE XXXXXX	DATE MAR 96	
CITY ENGINEER'S OFFICE 450 NORTH MAIN STREET WICHITA, KANSAS 67202 (316) 268-4114 FAX		SHEET 5 OF 49	